

De-clutchable Quarter-turn Manual Overrides for Pneumatic Actuation

AMO Series



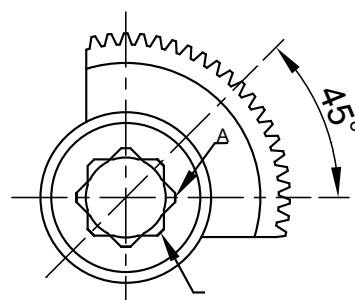
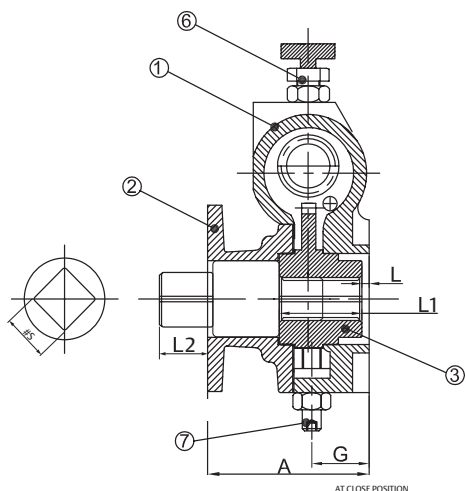
Standard Features

- 4 models up to 3500 Nm
- Specifically designed for all types of pneumatic rack and pinion actuators
- Superior die cast aluminum bodies for reduced weight and aesthetically pleasing look
- Powder coated finish for AMO and handwheel
- Robust internals with alloy steel worm shafts
- Stroke 0-90° (+5° adjustable)
- Integral top flange (ISO drive coupling available on request)
- Enclosure sealed to IP-54
- Temperature range: -20 °C (-4 °F) to +120 °C (+248 °F)
- Smooth and easy clutch – declutch mechanism
- Stainless steel hardware

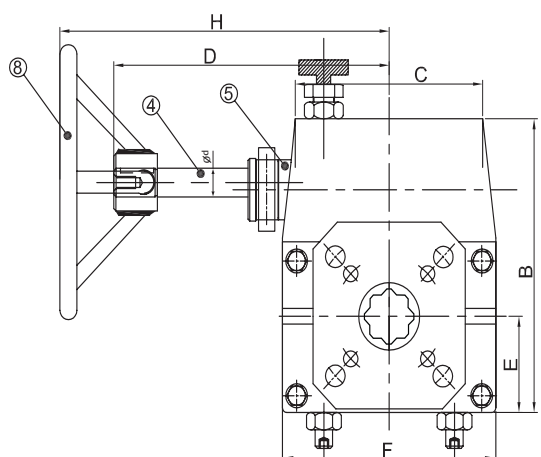
Options

- Worm shaft, fasteners and hand wheel material option available in stainless steel
- Worm wheel material option available in aluminum bronze
- High temperature variant up to +150 °C (302 °F) & low temperature variant up to -52 °C (-61.6 °F) available
- Marine application (all exposed fasteners and shafts in stainless steel)

De-clutchable Quarter-turn Manual Overrides for Pneumatic Actuation



View From Top At Close Position



Sr No.	Description	Material	US Standard	IS Standard
1	G.B. Housing	Aluminum	-	Lm25
2	G.B. Top Cover	Aluminum	-	Lm25
3	Worm Wheel	Ductile Iron	ASTM A536 70-50-05	SG IRON 500/7
4	Worm Shaft	Carbon Steel	A 576 1045	45C8
5	ECC Bush	Aluminum	-	Lm25
6	Selector Assembly	Carbon Steel	A 576 1045	45C8
7	Hardware	Stainless Steel	SS304	SS304
8	Handwheel	Carbon Steel	ASTM A53	IS 2062 Gr B

Model	Output Torque (Nm) ±10%	Mech. Advan. ±10%	Ratio	Turns To Close	ISO 5211 Mounting (Valve Side)	ISO 5211 Mounting (Actuator Side)	Drive Bore (Square)	#S	L2	Ød	Hand wheel	A	B	C	D	E	F	G	L	L1	H	R&P Size / Model
AMO 0.5	200	8	38:1	9.5	F05/F07	F05/F07	14	14	19	12	Ø175	68	121	86	126.5	40	98	24	3.5	35	168	25*, 40, 65
AMO 1	650	9	38:1	9.5	F07/F10	F07/F10	19	19	19	14	Ø250	87	171	124	165	54	149	36	3	54	230	100, 150, 200
AMO 2	1500	16	76:1	19	F10/F14	F10/F14	27	27	27	16	Ø400	115	248	182	225	73	272	40	4.0	91	325	350, 600, 950*
AMO 3	3500	22	87:1	21.75	F16/F25	F16/F25	46	46	46	25	Ø600	174	405	220	298	131	400	54	2	124	398	1600, 2500
AMO 0.5-LT1	200	8	38:1	9.5	F05/F07	F05/F07	14	14	19	12	Ø175	68	121	86	127	40	98	24	3	35	168	25*, 40, 65
AMO 1-LT1	650	9	38:1	9.5	F07/F10	F07/F10	19	19	19	14	Ø250	87	171	124	165	54	149	30	3	54	230	100, 150, 200
AMO 2-LT1	1500	16	76:1	19	F10/F14	F10/F14	27	27	27	16	Ø400	116	248	182	225	73	272	40	3.5	91	325	350, 600, 950*
AMO 3-LT1	3500	22	87:1	21.75	F16/F25	F16/F25	46	46	46	25	Ø600	174	405	220	298	131	400	54	2	124	398	1600, 2500

- NOTES:**
 1. R&P models marked with an asterisk (25 and 950) require additional square adaptor for direct mounting
 2. AMO-LT1 for Low Temp. Application (with low temp grease & low temp seals)
 3. De-pressurized R&P actuator prior to manual override operation

World Area Configuration Centers (WACC) offer sales support, service, inventory and commissioning to our global customers.

Contact us at gears@emerson.com

19200 Northwest Freeway
 Houston TX 77065
 USA
 T +1 281 477 4100
 F +1 281 477 2809

©2019 Emerson. All rights reserved.

The Emerson logo is a trademark and service mark of Emerson Electric Co. Emerson reserves the right to amend and change specifications without prior notice.