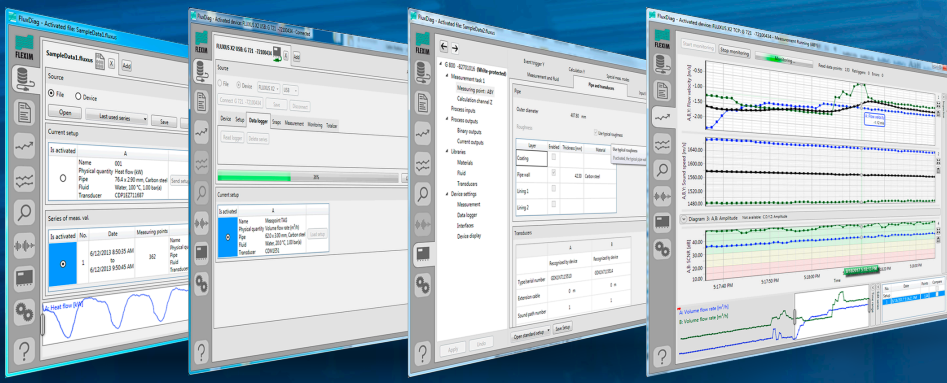


# Flexim Transmitter Data Analysis Software

Data management, visualization, statistical analysis and reporting

Management, Evaluation and Reporting Software





## Efficient data and device management

Emerson helps offer an overview of your processes with Flexim FluxDiag, a proprietary software. This data visualization tool gives insight to your processes and transmitter parameterization with features such as live monitoring and remote device access. With this user-friendly software large data sets and large number of installation sites can be managed efficiently.

- Modern and effective processing of measurement data
- Data download and remote control of Flexim transmitters
- In-depth understanding and control of the device parameterization
- Live monitoring of measurements

## Extensive visualization and statistical analysis tools

FluxDiag offers extensive possibilities for the visualization of measured values which helps you gain an in-depth understanding of your process. The statistical tools of FluxDiag offer further advanced data analysis.

- Crystal clear and strong data visualization
- Illustrative diagrams of different kinds
- Transparent statistical data analysis
- Highly customizable diagrams and views

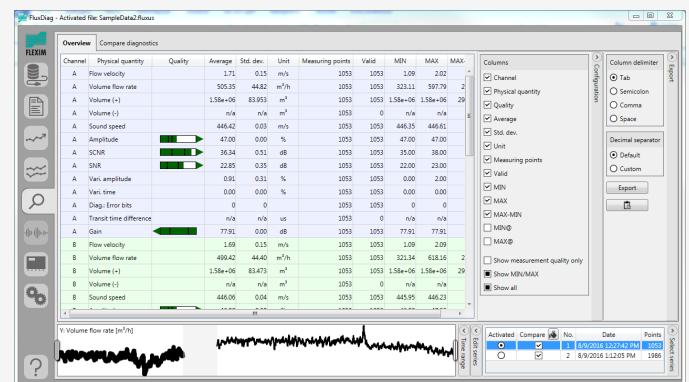
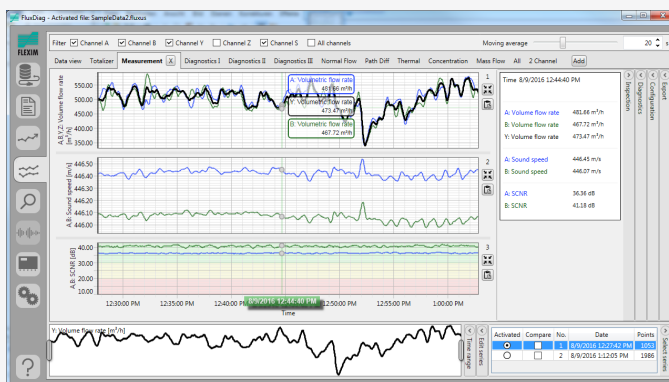
## Application Versatility

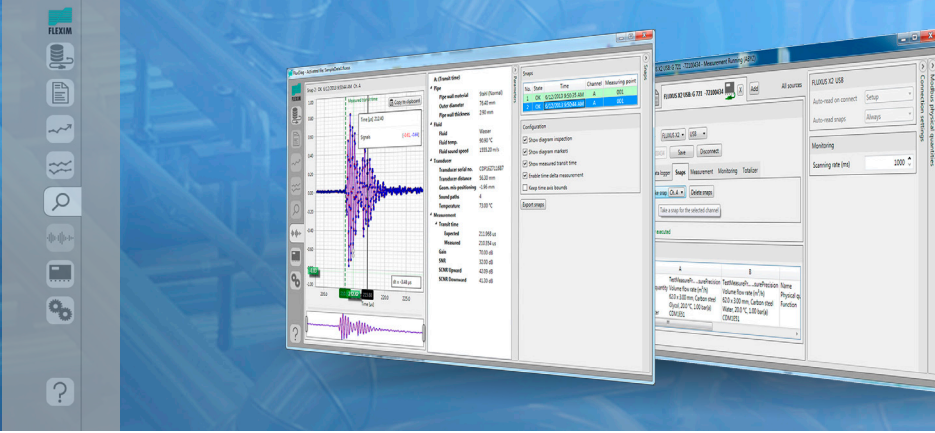
Efficient data and device management

Excellent visualization and statistical analysis tools

Highly advanced signal and process diagnostic functions

Convenient reporting options





## Highly advanced signal and process diagnostic functions

With FluxDiag experts in flow measurement have a powerful software solution for analyzing signal quality and signal development with time, e.g. with the compare view function. This can even be done for live processes with the remote signal snapshot tool.

- In-depth signal health analysis
- Live process diagnosis through remote signal snapshots
- Various comparative analysis tools

## Convenient reporting options

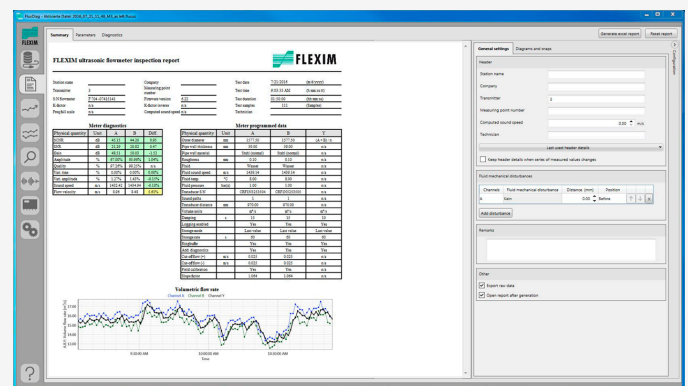
The reporting tools of FluxDiag ensure your reporting tasks can be done in a both time-saving and visually appealing way. Different report templates are available and reports can be customized by the user.

- Comprehensive application reports
- Comparative or maintenance reporting

## Advanced meter verification

Advanced Meter Verification (AMV) allows you to check the health of your FLUXUS® flow measurements in depth directly onsite without the need of process interruption.

|    | A                    | B                | C           | D         | E       | F      | G     | H               | I          | J                | K                | L                | M                | N | O |
|----|----------------------|------------------|-------------|-----------|---------|--------|-------|-----------------|------------|------------------|------------------|------------------|------------------|---|---|
|    | A                    | A                | A           | A         | A       | A      | A     | A               | A          | A                | A                | A                | A                | A | A |
|    | Flow velocity        | Volume flow rate | Sound speed | Amplitude | Quality | SNHR   | SNR   | Vari. amplitude | Vari. time | Diag. Error bits | Event trigger R1 | Event trigger R2 | Event trigger R3 |   |   |
| 1  | m/s                  | m³/s             | m/s         | %         | %       | dB     | dB    | %               | %          |                  |                  |                  |                  |   |   |
| 2  |                      |                  |             |           |         |        |       |                 |            |                  |                  |                  |                  |   |   |
| 3  |                      |                  |             |           |         |        |       |                 |            |                  |                  |                  |                  |   |   |
| 4  | 7.21.2016 8:46:58 AM | 8,89             | 15,63       | 1426,31   | 64,00%  | 98,00% | 40,00 | 10,00           | 6,00%      | 0,00%            | 0                |                  |                  |   |   |
| 5  | 7.21.2016 8:47:58 AM | 9,30             | 16,43       | 1426,96   | 65,00%  | 96,00% | 40,00 | 20,00           | 4,00%      | 5,00%            | 0                |                  |                  |   |   |
| 6  | 7.21.2016 8:48:58 AM | 8,88             | 15,63       | 1427,75   | 65,00%  | 97,00% | 46,00 | 20,00           | 3,00%      | 0,00%            | 0                |                  |                  |   |   |
| 7  | 7.21.2016 8:49:58 AM | 8,89             | 15,70       | 1427,22   | 65,00%  | 98,00% | 37,00 | 14,00           | 4,00%      | 0,00%            | 0                |                  |                  |   |   |
| 8  | 7.21.2016 8:50:58 AM | 9,17             | 16,21       | 1428,80   | 64,00%  | 98,00% | 40,00 | 19,00           | 4,00%      | 13,00%           | 0                |                  |                  |   |   |
| 9  | 7.21.2016 8:51:58 AM | 9,13             | 16,13       | 1433,43   | 64,00%  | 97,00% | 36,00 | 17,00           | 4,00%      | 0,00%            | 0                |                  |                  |   |   |
| 10 | 7.21.2016 8:52:58 AM | 8,99             | 15,90       | 1435,41   | 64,00%  | 96,00% | 45,00 | 22,00           | 7,00%      | 0,00%            | 0                |                  |                  |   |   |
| 11 | 7.21.2016 8:53:58 AM | 8,97             | 15,85       | 1436,11   | 64,00%  | 96,00% | 37,00 | 18,00           | 3,00%      | 0,00%            | 0                |                  |                  |   |   |
| 12 | 7.21.2016 8:54:58 AM | 8,97             | 15,85       | 1436,10   | 64,00%  | 97,00% | 41,00 | 17,00           | 3,00%      | 0,00%            | 0                |                  |                  |   |   |
| 13 | 7.21.2016 8:55:58 AM | 8,73             | 15,42       | 1436,49   | 64,00%  | 98,00% | 46,00 | 13,00           | 4,00%      | 14,00%           | 0                |                  |                  |   |   |
| 14 | 7.21.2016 8:56:58 AM | 8,93             | 15,78       | 1436,67   | 64,00%  | 98,00% | 45,00 | 15,00           | 4,00%      | 2,00%            | 0                |                  |                  |   |   |
| 15 | 7.21.2016 8:57:58 AM | 9,03             | 15,95       | 1436,32   | 66,00%  | 97,00% | 37,00 | 25,00           | 2,00%      | 0,00%            | 0                |                  |                  |   |   |
| 16 | 7.21.2016 8:58:58 AM | 8,81             | 15,56       | 1436,62   | 66,00%  | 98,00% | 40,00 | 18,00           | 2,00%      | 0,00%            | 0                |                  |                  |   |   |
| 17 | 7.21.2016 8:59:58 AM | 8,82             | 15,60       | 1436,60   | 67,00%  | 97,00% | 46,00 | 9,00            | 3,00%      | 0,00%            | 0                |                  |                  |   |   |
| 18 | 7.21.2016 9:00:58 AM | 9,12             | 16,12       | 1436,47   | 66,00%  | 97,00% | 43,00 | 21,00           | 7,00%      | 0,00%            | 0                |                  |                  |   |   |
| 19 | 7.21.2016 9:01:58 AM | 8,85             | 15,65       | 1436,72   | 67,00%  | 98,00% | 43,00 | 18,00           | 7,00%      | 0,00%            | 0                |                  |                  |   |   |



| DATA AND DEVICE MANAGEMENT FEATURES   | FLUXDIAG | FLUXDIAG READER |
|---|----------|-----------------|
| Readout and visualization of transmitter logger data and parameterization             | X        | X               |
| Remotely controlling the transmitter and its parameterization (with x2x transmitters) | X        |                 |
| Live monitoring of measured values (TCP, USB, COM, Modbus)                            | X        |                 |
| Loading new substances to the transmitter   | X        |                 |
| VISUALIZATION AND STATISTICAL FEATURES  | FLUXDIAG | FLUXDIAG READER |
| Basic graphical visualization of measured values                                      | X        | X               |
| Extended graphical and tabular visualization of measured values                       | X        |                 |
| Display of statistical parameters of measured values                                  | X        |                 |
| ADVANCED SIGNAL AND PROCESS DIAGNOSTIC FEATURES                                       | FLUXDIAG | FLUXDIAG READER |
| Display of signal snaps   | X        |                 |
| Comparison of parameterizations   | X        |                 |
| Comparison of measured values   | X        |                 |
| REPORTING FEATURES  | FLUXDIAG | FLUXDIAG READER |
| Export of data as CSV file  | X        | X               |
| Creating reports of the transmitter parameterization and measured values              | X        |                 |
| Creating signal and measured value comparison reports                                 | X        |                 |
| AUTOMATIC UPDATES   | FLUXDIAG | FLUXDIAG READER |
| Free of charge automatic updates  | X        | X               |
| ADVANCED METER VERIFICATION   | FLUXDIAG | FLUXDIAG READER |
| Comprehensive onsite meter verification   | X        | Preview         |



The Emerson logo is a trademark and service mark of Emerson Electric Co. Brand logotype are registered trademarks of one of the Emerson family of companies. All other marks are the property of their respective owners.  
© 2024 Emerson Electric Co.

All rights reserved.

For more information, visit

[Emerson.com/Flexim](https://www.emerson.com/Flexim)

BUFLUXDIAGV1-2 US 0124

**FLEXIM**

