

# Effective Use of FIELDVUE™ DVC6200 Instrument Diagnostics

## HART® Communication Protocol

Fisher™ FIELDVUE instruments offer state-of-the-art diagnostic tools providing a window into the health of valve assembly assets. However, crafting a maintenance strategy to take advantage of these tools can be a daunting task. These basic steps will provide immediate value and build momentum toward broader utilization.

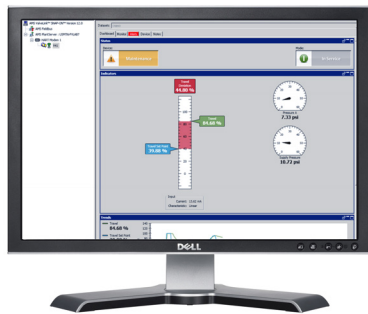


### Commissioning/Diagnostic Tools

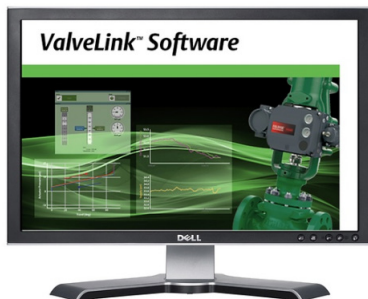
ValveLink™ Mobile with AMS  
Trex Device Communicator  
or 475 Field Communicator



AMS ValveLink SNAP-ON™  
Software



ValveLink Solo &  
ValveLink DTM Software



### Commissioning/Diagnostic Tests by Instrument Level

#### HART Communicating (HC) Tier Diagnostic Tests

- Collect a detailed setup and save dataset
- Perform a status monitor while in service and save the data set
  - Save data sets for 4mA, 12mA, and 20mA

#### Advance (AD) Tier Diagnostics

- Run HC Tier Tests
- Run a Total Scan
- Run a Valve Step Response Tests
  - 3 Set Point Step Test\*
    - 0, 100, 0
    - Ramp Time = 0
    - Collection Time = 10 seconds
  - Performance Step Test\*
    - Predefined 25 step test
    - Ramp Time = 0
    - Collection Time = 10 seconds



\*Preconfigured tests (shown above) are available in  
ValveLink Software version 13.1 or greater

#### Performance Diagnostics (PD) Tier

- Run HC and AD Tier Tests
- Read Triggered Data (if Data Available Alert is active) and save dataset
- Run a One Button Sweep Diagnostic Test
- Run a Valve Friction Test and save dataset

# Commissioning

## Commissioning Steps

1. Follow the mounting and installation guidelines per the Fisher FIELDVUE DVC6200 Quick Start Guide
2. Run the setup wizard
3. Run the Auto Travel Calibration
4. Configure the instrument, per the table to the right





Setup Parameter	Factory Default Settings	Recommended Initial Settings
HART Tag	As Specified On Order	Fill in Plant Information
Message	Blank	Fill in Plant Information
Descriptor	Blank	Fill in Plant Information
Date	Factory Calibration Date	Set to Current Date
Valve Serial Number	Blank	Fill in Valve Serial Number
HC Tier / AD Tier / PD Tier		
Travel Deviation Alert Enabled	Yes	Yes
Travel Deviation Alert Point	5%	5%
Travel Deviation Time	9.99 seconds	5 seconds
Supply Pressure Alert Enable	Yes	Yes
Supply Pressure Alert Point	.345 Bar (5 psi)	Single Acting: 0.20 Bar (3 psi) above upper bench set Double Acting: 0.68 Bar (10 psi) below nominal
Drive Signal Alert Enable	Yes	Yes
Diagnostic Data Avail Enable**	No	Yes
Alert Record Enable	No	Yes
Alert Record Not Empty Enable*	No	Yes
Alert Record Full Enable*	No	Yes
Cycle Counter	0	0
Travel Accumulator	0	0
PD Tier Only		
Trigger Profile Enable**	Disabled	Enable
Trigger Profile Variables**	Travel / Travel Setpoint	Travel / Travel Setpoint / Drive Signal / Supply Pressure
Triggered Profile Events**	None	Travel Deviation
Trigger Record Length**	60 Sec	60 Sec

\*Requires a work practice to regularly check/clear the alert

\*\*Functionality with Performance Diagnostics Tier

**FISHER™**

Emerson Automation Solutions  
Flow Controls  
Marshalltown, Iowa, 50158 USA  
Sorocaba, 18087 Brazil  
Cernay, 68700 France  
Dubai, United Arab Emirates  
Singapore 128461 Singapore

-  Fisher.com
-  Facebook.com/FisherValves
-  LinkedIn.com/groups/Fisher-3941826
-  Twitter.com/FisherValves



To learn more, visit  
[Emerson.com/FisherDVC6200](http://Emerson.com/FisherDVC6200)

© 2017 Fisher Controls International LLC. All rights reserved. Fisher, FIELDVUE, ValveLink, and AMS ValveLink SNAP-ON are marks owned by one of the companies in the Emerson Automation Solutions business unit of Emerson Electric Co. Emerson, and the Emerson logo are trademarks and service marks of Emerson Electric Co. All other marks are the property of their respective owners. The contents of this publication are presented for informational purposes only, and while every effort has been made to ensure their accuracy, nothing herein is to be construed as a warranty or guarantee, express or implied, regarding the products or services described herein or their use, performance, merchantability or fitness for a particular purpose. Individual results may vary. All sales are governed by our terms and conditions, which are available upon request. We reserve the right to modify or improve the designs or specifications of our products at any time without notice. Responsibility for proper selection, use and maintenance of any product or service remains solely with the purchaser and end user. D352709X012 / MDD11 / Mar17

  
**EMERSON™**