



For faster maintenance of DP  
Level Seal Systems

**Rosemount™ 319 Flushing Rings**

Right the first time, factory leak tested solutions that reduce maintenance and increase efficiency.



## Why Use Flushing Rings?



### Cleaner diaphragm seals, faster

- Cleans diaphragm seals up to five times faster over traditional methods
- Eliminate long process shutdown times
- Improve diaphragm seal surface cleaning, with injection flushing

### Less labor, quicker installations

- Pre-assembled - no need for multiple vendor piece parts
- Eliminate on-site assembly of components
- Fast maintenance for substantial process uptime

### Drastically Reduces Maintenance time

- A simple way for maintenance staff to safely vent or drain excess pressure in the line
- A convenient method to access process fluid for sampling
- No removal of instrumentation or disassembly of process connections

## Advantage: You

Flushing rings are a fast and efficient way to clean particulate buildup on diaphragm seals that can cause false pressure readings. You can eliminate expensive labor cost and long shutdown times by installing Rosemount 319 Flushing Rings.

Reducing plant maintenance time is one of the easiest ways to gain efficiencies. Flushing rings

save time by avoiding process shut down to empty tanks, remove the entire assembly from the vessel, and then disassemble components to expose the seal for cleaning or replacement.

# Two Designs, Limitless Configurations



## Compact Flushing Ring Designs

**Compact designs** have 50% less leak points compared to traditional designs for increased reliability

**Vortex designs** clean 30% more diaphragm seal surface area for increased interval time between cleanings

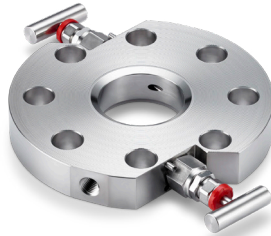
**More efficient cleaning** that is up to 5 times faster than typical designs

**Smaller form factor** is easier to connect and has less chance of valve damage

**Available in** bolt-through and non-bolt-through designs, multiple materials, sizes and ratings

**Fully assembled** ensures parts fit together and ready to assemble to the process

**Factory leak tested** so you know it's right the first time



## Traditional Flushing Ring Designs

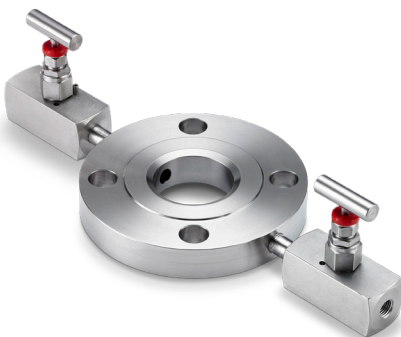
**Easy to upgrade** your existing assembly type

**Available in** bolt-through and non-bolt-through designs, multiple materials, sizes and ratings

**Multiple valve types** - needle, ball and gate valves

**Fully assembled** ensures parts fit together and ready to assemble to your process

**Factory leak tested** so you know it's right the first time



# Flushing rings for DP Level Seal Systems. Faster, more efficient maintenance.




Flushing ring designs are available in multiple materials, flange types, sizes and ratings.

To learn more about Rosemount 319 Flushing Rings visit [Emerson.com/Rosemount.com319](https://www.emerson.com/Rosemount.com319)

 [Emerson.com](https://www.emerson.com)

 [Facebook.com/EmersonAutomationSolutions](https://www.facebook.com/EmersonAutomationSolutions)

 [LinkedIn.com/company/Emerson-Automation-Solutions](https://www.linkedin.com/company/Emerson-Automation-Solutions)

 [Twitter.com/EMR-Automation](https://twitter.com/EMR-Automation)

Before using Emerson products, it is important that you review the health and safety information, and other information regarding the limitations of our products, contained in the applicable user manuals located at [www.emerson.com](https://www.emerson.com).

The Emerson logo is a trademark and service mark of Emerson Electric Co. Rosemount is a mark of one of the Emerson family of companies. All other marks are the property of their respective owners.  
©2022 Emerson Electric Co. All rights reserved.

00803-0200-6083 Rev AB

