

Glue Level Control Device Increases Throughput with Increased Measurement Accuracy

RESULTS

- Reduced risk of off-spec. cigarettes
- Minimized maintenance costs
- Easy installation and simple start-up
- Reduced instrumentation inventory



APPLICATION

Level control of glue pots on cigarette machines

CUSTOMER

Cigarette manufacturing plant

CHALLENGE

There is a need to ensure a sufficient amount of glue is applied to the edge of the paper that is wrapped around the tobacco so that it will hold the finished cigarette together.

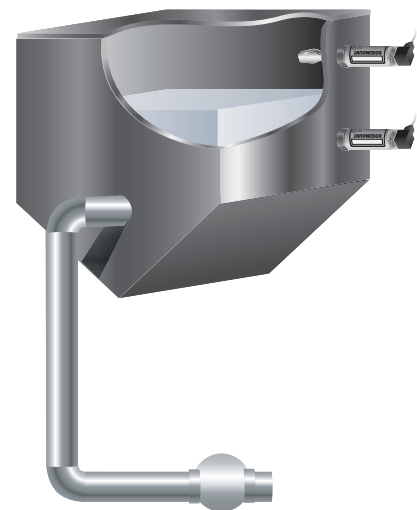
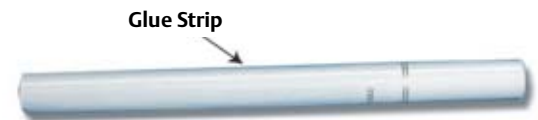
To produce a high quality finish on the glue strip of a cigarette, the glue pot level must be kept within a set of predetermined level setpoints. If the glue pot runs empty or overfills, it will cause potential loss of the final product.

Many existing batching header tanks are made of thin-wall materials. These tanks require small openings with threaded inlets. Devices must be lightweight in order to be installed in tanks like these. These specific tanks are also small in size, which leads to rapid changes in level, even with small volume output. This further emphasizes the need for two level measurement points, an overflow detection and low level detection.

SOLUTION

Emerson provided a glue pot level solution in the form of two Rosemount 2110 Compact Vibrating Fork Liquid Level Switches. The devices have small threaded process connections, are lightweight and highly reliable, ensuring that the glue pots are kept within the proper operating range at all times.

Many other devices had been tried in this application, but failed to meet the requirements of the application. The small size of the 2110 allows it to easily fit on these small vessels. It also offers the flexibility of both wet and dry settings in the same switch, therefore reducing the necessary inventory of measurement devices.



Rosemount 2110 mounting diagram for successful glue pot level control.

RESOURCES

Rosemount 2110

<http://www.emersonprocess.com/rosemount/products/level/m2110.html>

Emerson Process Management's Food and Beverage Web Page

<http://www.emersonprocess.com/foodandbeverage/>

The Emerson logo is a trade mark and service mark of the Emerson Electric Co. Rosemount and the Rosemount logotype are registered trademarks of Rosemount Inc. All other marks are the property of their respective owners.

Emerson Process Management

Rosemount Inc.
8200 Market Boulevard
Chanhassen, MN 55317 USA
T (U.S.) 1-800-999-9307
T (International) (952) 906-8888
F (952) 949-7001
www.rosemount.com

Emerson Process Management

Europe, Middle East & Africa
Health Place
Bognor Regis
West Sussex PO22 9SH
England
Tel 44 1243 863121
Fax 44 1243 867554

Emerson Process Management

Emerson Process Management Asia Pacific
Private Limited
1 Pandan Crescent
Singapore 128461
T (65) 6777 8211
F (65) 6777 0947
Enquiries@AP.EmersonProcess.com

ROSEMOUNT[®]

For more information:
www.rosemount.com


EMERSON[™]
Process Management