

ASCO™ Biodiesel Oil Valves

Direct Acting, Brass Body, 3/8" to 3/4" NPT

2/2
Series
266

Features

- 2-way normally closed or normally open operation
- Zero differential lever actuated
- For on-off control of fuel oil in commercial and industrial oil burners
- Rated for Biodiesel blends up to B100

Fluid

No. 2, B20 & B100 Fuel Oil at 60 SSU
No. 4 Fuel Oil at 300 SSU

Construction

Valve Parts in Contact with Fluids	
Body	Brass
Seals and Disc	SS (Suffix LV1)
Core and Plugnut	430F Stainless Steel
Springs	302 Stainless Steel
Shading Coil	Copper

Electrical

Standard Coil and Class of Insulation	Watt Rating and Power Consumption			Spare Coil Part Number
	AC			AC
	Watts	VA Holding	VA Inrush	General Purpose
F	16.1	35	180	568722
H	16.1	35	180	568723
F	20.1	48	240	568722
H	20.1	48	240	568723

Standard lead length: 18" (72" leads optional - change suffix "D" to "K").
Standard Voltages: 12, 24, 120, 240, 480 volts AC, 60 Hz (or 24, 110, 115, 220, 230, 440 volts AC, 50 Hz).

Approvals

UL certified to:

- Standard 429 "Electrically Operated Valves." Guide YIOZ/YIOZ2, File MP618
- Standard 428B, "Electrically Operated Valves For Diesel Fuel, Biodiesel Fuel, Diesel/Biodiesel Blends With Nominal Biodiesel Concentrations Up To 20 Percent (B20), Biodiesel (B100), Kerosene, and Fuel Oil

CSA certified to:

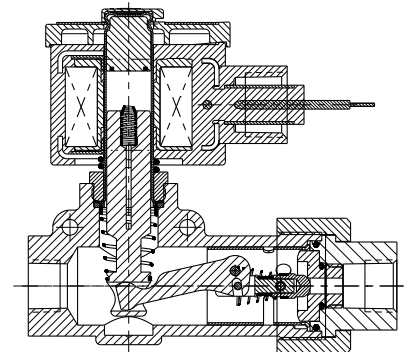
- Standard C22.2 No. 139 "Electrically Operated Valves" File 010381 class 3221-01,81; Biodiesel B20 and B100

Normally Closed Valves:

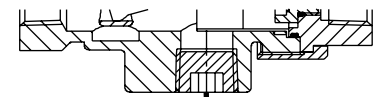
- UL/CSA: Safety Shutoff Valves

Normally Open Valves:

- UL/CSA: General Purpose Valves



construction 1



to preheating
construction 2

Solenoid Enclosures

Standard: Watertight, Types 1, 2, 3, 3S, 4 and 4X.
Optional: Explosionproof and Watertight, Types 3, 3S, 4, 4X, 6, 6P, 7 and 9.
(To order, add prefix "EF" to catalog number.)
See Optional Features Section for other available options

Valve Response Time

Opening Time: Less than 1 second
Closing Time: Less than 1 second

ASCO™ Biodiesel Oil Valves

Direct Acting, Brass Body, 3/8" to 3/4" NPT

2/2
Series
266

Specifications (English units)

Pipe Size (in)	Orifice Size (in)	Cv Flow Factor	Minimum Operating Pressure Differential (psi)	Maximum Operating Pressure Differential (psi) #2, B20 & B100 Fuel Oil at 60 SSU, #4 Fuel Oil at 300 SSU	Max. Fluid Temp. °F	Catalog Number	Const. Ref.	Agency		Wattage
								Stainless Steel Seating	UL	
COMBUSTION (Fuel Oil) - Normally Closed without Bypass										
3/8	1/8	0.34	0	400	See Table Below	8266G001LV1	1	○	○	16.1/F
3/8	3/16	0.68	0	200		8266G007LV1	1	○	○	16.1/F
3/8	3/16	0.68	0	300		8266G011LV1	1	○	○	20.1/F
3/8	1/4	1.20	0	110		8266G023LV1	1	○	○	16.1/F
1/2	1/8	0.34	0	400		8266G047LV1	1	○	○	16.1/F
1/2	3/16	0.68	0	200		8266G053LV1	1	○	○	16.1/F
1/2	3/16	0.68	0	300		8266G057LV1	1	○	○	20.1/F
1/2	13/64	0.78	0	170		8266G061LV1	1	○	○	16.1/F
1/2	1/4	1.20	0	110		8266G069LV1	1	○	○	16.1/F
1/2	5/16	1.80	0	70		8266G077LV1	1	○	○	16.1/F
1/2	3/8	2.50	0	40		8266G085LV1	1	○	○	16.1/F
COMBUSTION (Fuel Oil) - Normally Closed with 1/2" NPT Bypass										
1/2	1/8	0.34	0	650	See Table Below	8266G203LV1	2	○	○	20.1/F
1/2	1/4	1.20	0	180		8266G215LV1	2	○	○	20.1/F
1/2	5/16	1.80	0	110		8266G219LV1	2	○	○	20.1/F
1/2	3/8	2.50	0	75		8266G223LV1	2	○	○	20.1/F
3/4	1/4	1.20	0	180		8266G239LV1	2	○	○	20.1/F
3/4	5/16	1.80	0	110		8266G243LV1	2	○	○	20.1/F
3/4	3/8	2.50	0	75		8266G247LV1	2	○	○	20.1/F
COMBUSTION (Fuel Oil) - Normally Open without Bypass										
3/8	1/8	0.34	0	425	See Table Below	8266G101LV1	1	●	●	16.1/F
3/8	3/16	0.68	0	160		8266G107LV1	1	●	●	16.1/F
3/8	1/4	1.20	0	90		8266G123LV1	1	●	●	16.1/F
1/2	3/16	0.68	0	160		8266G153LV1	1	●	●	16.1/F
1/2	13/64	0.78	0	130		8266G161LV1	1	●	●	16.1/F
1/2	1/4	1.20	0	90		8266G169LV1	1	●	●	16.1/F

○ = Safety Shutoff Valve
● = General Purpose Valve

Coil	Watt Rating	Insulation Class	Max. Fluid Temp. °F	Max. Ambient Temp. °F	Catalog No. Prefix	
Standard	16.1	F	250	125	None Required	
	20.1	F				
For Higher Ambient Temp. Use	16.1	H		140		HT
	20.1	H				HB

ASCO™ Biodiesel Oil Valves

Direct Acting, Brass Body, 3/8" to 3/4" NPT

2/2
Series
266

Specifications (Metric units)

Pipe Size (in)	Orifice Size (mm)	Kv Flow (m ³ /hr)	Minimum Operating Pressure Differential (bar)	Maximum Operating Pressure Differential (bar) #2, B20 & B100 Fuel Oil at 60 SSU, #4 Fuel Oil at 300 SSU	Max. Fluid Temp. °C	Catalog Number	Const. Ref.	Agency		Wattage
								Stainless Steel Seating	UL	
COMBUSTION (Fuel Oil) - Normally Closed without Bypass										
3/8	3	0.3	0	27.6	See Table Below	8266G001LV1	1	○	○	16.1/F
3/8	5	0.6	0	13.8		8266G007LV1	1	○	○	16.1/F
3/8	5	0.6	0	20.7		8266G011LV1	1	○	○	20.1/F
3/8	6	1.0	0	7.6		8266G023LV1	1	○	○	16.1/F
1/2	3	0.3	0	27.6		8266G047LV1	1	○	○	16.1/F
1/2	5	0.6	0	13.8		8266G053LV1	1	○	○	16.1/F
1/2	5	0.6	0	20.7		8266G057LV1	1	○	○	20.1/F
1/2	5	0.7	0	11.7		8266G061LV1	1	○	○	16.1/F
1/2	6	1.0	0	7.6		8266G069LV1	1	○	○	16.1/F
1/2	8	1.5	0	4.8		8266G077LV1	1	○	○	16.1/F
1/2	10	2.1	0	2.8		8266G085LV1	1	○	○	16.1/F
COMBUSTION (Fuel Oil) - Normally Closed with 1/2" NPT Bypass										
1/2	3	0.3	0	44.8	See Table Below	8266G203LV1	2	○	○	20.1/F
1/2	6	1.0	0	12.4		8266G215LV1	2	○	○	20.1/F
1/2	8	1.5	0	7.6		8266G219LV1	2	○	○	20.1/F
1/2	10	2.1	0	5.2		8266G223LV1	2	○	○	20.1/F
3/4	6	1.0	0	12.4		8266G239LV1	2	○	○	20.1/F
3/4	8	1.5	0	7.6		8266G243LV1	2	○	○	20.1/F
3/4	10	2.1	0	5.2		8266G247LV1	2	○	○	20.1/F
COMBUSTION (Fuel Oil) - Normally Open without Bypass										
3/8	3	0.3	0	29.3	See Table Below	8266G101LV1	1	●	●	16.1/F
3/8	5	0.6	0	11.0		8266G107LV1	1	●	●	16.1/F
3/8	6	1.0	0	6.2		8266G123LV1	1	●	●	16.1/F
1/2	5	0.6	0	11.0		8266G153LV1	1	●	●	16.1/F
1/2	5	0.7	0	9.0		8266G161LV1	1	●	●	16.1/F
1/2	6	1.0	0	6.2		8266G169LV1	1	●	●	16.1/F

○ = Safety Shutoff Valve
● = General Purpose Valve

Coil	Watt Rating	Insulation Class	Max. Fluid Temp. °C	Max. Ambient Temp. °C	Catalog No. Prefix
Standard	16.1	F	121	50	None Required
	20.1	F			
For Higher Ambient Temp. Use	16.1	H		60	HT
	20.1	H			HB

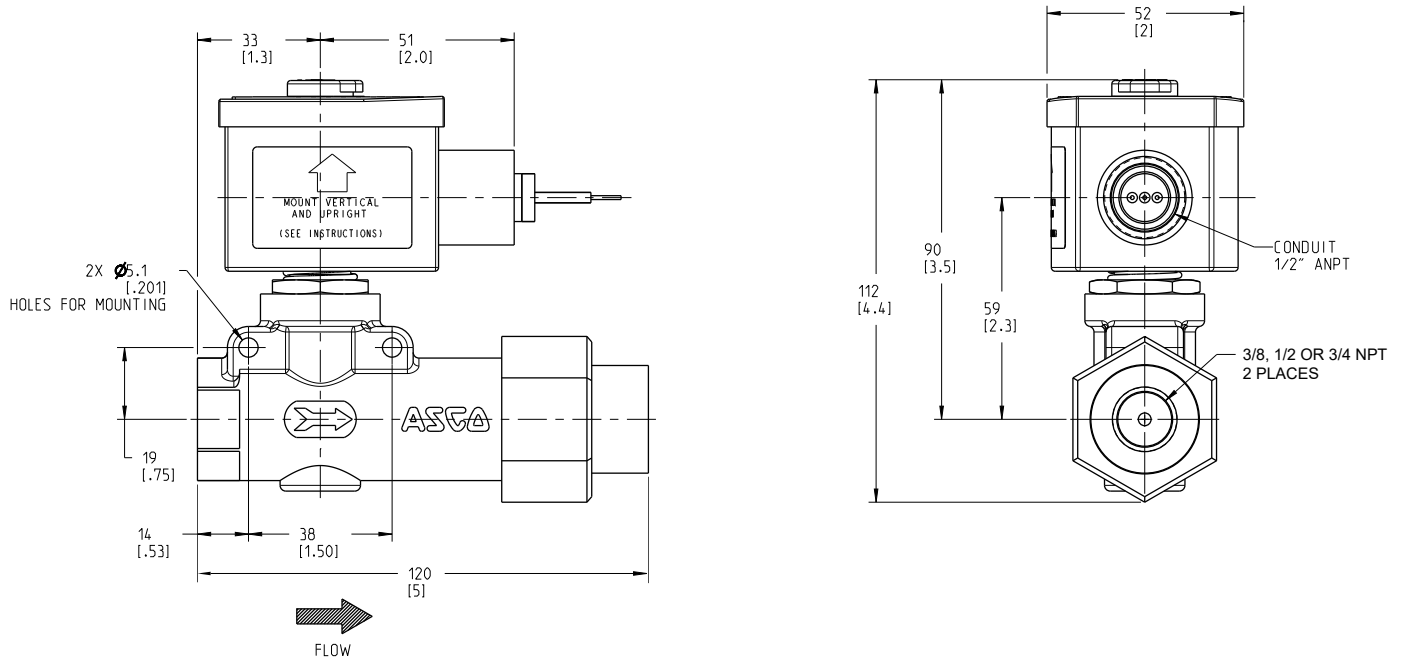
ASCO™ Biodiesel Oil Valves

Direct Acting, Brass Body, 3/8" to 3/4" NPT

**2/2
Series
266**

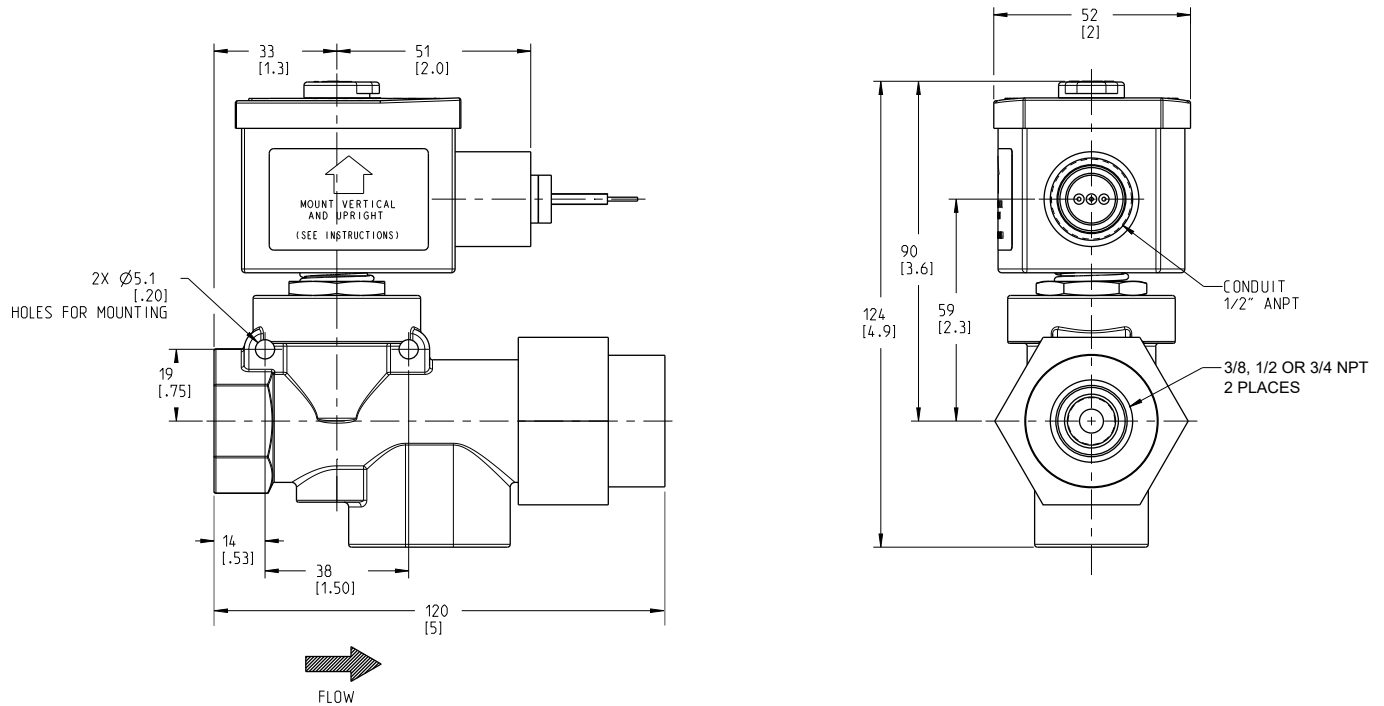
Dimensions: mm (inches)

Const. Ref. 1



Must be mounted with solenoid vertical and upright.

Const. Ref. 2



Must be mounted with solenoid vertical and upright.

Availability, design and specifications are subject to change without notice.
© 2024 Emerson Electric Co. All rights reserved.