

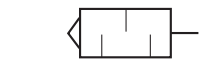
Pneumatic Accessories

Silencer - Exhaust Protector - Performance Exhaust Protector - Shuttle Valve

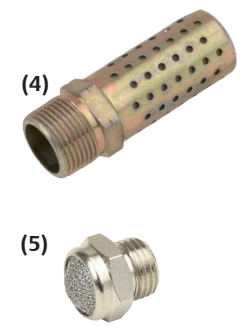
Series **346 - M - 888**

Silencer (1) (2) (5) - Exhaust Protector (3) (4)

| | | | | |
|----------------------------------|------------------|----------------|---------------|-------------|
| Operating pressure | (1) | | (2) | (3) |
| | 0 to 10 bar | | | 0 to 12 bar |
| Ambient temperature range | -10°C to +80°C | | | |
| Construction | body | porous plastic | porous bronze | bronze |
| | connection piece | plastic | brass | brass |
| Catalog number | | | | |
| Pipe size | Ø M5 | 34600405 | 34600207 | 34600491 |
| | G 1/8 | 34600406 | 34600001 | 34600492 |
| | G 1/4 | 34600407 | 34600002 | 34600493 |
| | G 3/8 | 34600408 | 34600003 | 34600494 |
| | G 1/2 | 34600409 | 34600004 | 34600495 |
| | G 3/4 | 34600410 | 34600005 | 34600496 |
| | G 1 | 34600411 | 34600006 | 34600497 |



| | | | | |
|----------------------------------|-----------------------|-------------------------------|---------------------|-------------------|
| Operating pressure | (4) | | (5) | |
| | 0 to 14 bar | | 0 to 10 bar | |
| Ambient temperature range | -20°C to +110°C | | -10°C to +80°C | |
| Construction | body | zinc-plated steel, bichromate | stainless steel | |
| | connection piece | brass | nickel plated brass | |
| Pipe size | | G (ISO 228/1) | M | G (ISO 228/1) NPT |
| | Catalog number | | | |
| Pipe size | Ø M5 | - | 34600484 | - |
| | 1/8" | M1MB | - | 34600418 34600482 |
| | 1/4" | M2MB | - | 34600419 34600483 |
| | 3/8" | M3MB | - | 34600478 - |
| | 1/2" | M4MB | - | 34600479 34600481 |
| | 3/4" | M5MB | - | - - |
| | 1" | M6MB | - | - - |



Performance Exhaust Protector (6)

| | | | | | | |
|----------------------------------|----------------------------|---------------------------|-----------------|-----------------|------------|-------------------------|
| Operating pressure | (6) | | | | | |
| | 0 to 16 bar ⁽¹⁾ | | | | | |
| Ambient temperature range | -60°C to +90°C | | | | | |
| Construction | body | stainless steel AISI 316L | | | | flow coefficient |
| | mesh seal | stainless steel AISI 316 | | | | |
| Pipe size | | NBR | | | Cv | Kv |
| | | G (ISO 228/1) | E (ISO 7/1) | NPT | | |
| Catalog number | | | | | | |
| Pipe size | 1/4" | G888A11210A0000 | E888A11210A0000 | 8888A11210A0000 | 3.0 | 2.6 43 |
| | 3/8" | G888A11310A0000 | E888A11310A0000 | 8888A11310A0000 | 4.4 | 3.8 64 |
| | 1/2" | G888A11410A0000 | E888A11410A0000 | 8888A11410A0000 | 7.8 | 6.8 113 |
| | 3/4" | G888A11510A0000 | E888A11510A0000 | 8888A11510A0000 | 13.5 | 11.6 194 |
| | 1" | G888A11610A0000 | E888A11610A0000 | 8888A11610A0000 | 28.2 | 24.4 407 |
| | 1" 1/2 ⁽¹⁾ | G888A11710A0000 | E888A11710A0000 | 8888A11710A0000 | 65.0 | 57.0 944 |
| 2" ⁽¹⁾ | G888A11810A0000 | E888A11810A0000 | 8888A11810A0000 | 138.0 | 119.0 1987 | |

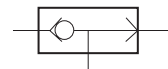


⁽¹⁾ Version 1" 1/2 and 2" available on special request and max. 10 bar.

Shuttle Valve

| | |
|----------------------------------|--|
| Fluids | Air or filtered neutral gas, lubricated or not |
| Operating pressure | 1 to 10 bar |
| Ambient temperature range | -10°C to +60°C |
| Construction | |
| Body | Black anodised aluminium |
| Internal parts | Steel + NBR (nitrile) |

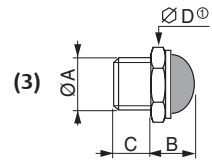
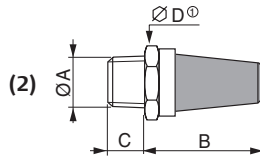
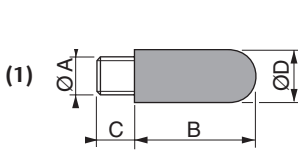
| pipe size | Ø orifice (mm) | Catalog number |
|-----------|----------------|----------------|
| G 1/8 | 3.2 | 34600127 |
| G 1/4 | 6 | 34600119 |



00221CB-2021/R01 Availability, design and specifications are subject to change without notice. All rights reserved.

Dimensions (mm), Weight (kg)

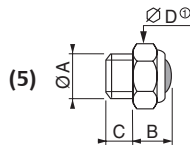
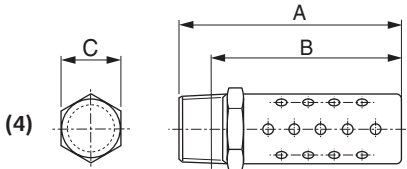
Silencer (1) (2) (5) - Exhaust Protector (3) (4) - Performance Exhaust Protector (6)



| Catalog number | ØA | B | C | ØD | weight |
|----------------|------|-------|------|------|--------|
| 34600405 | M5 | 17.5 | 4 | 6.5 | 0.0005 |
| 34600406 | G1/8 | 28.5 | 5.5 | 12.5 | 0.002 |
| 34600407 | G1/4 | 34.5 | 8 | 15.5 | 0.004 |
| 34600408 | G3/8 | 56 | 11.5 | 18.5 | 0.006 |
| 34600409 | G1/2 | 66.5 | 11 | 23.3 | 0.010 |
| 34600410 | G3/4 | 115.5 | 16 | 38.5 | 0.040 |
| 34600411 | G1 | 140 | 21 | 49 | 0.065 |

| Catalog number | ØA | B | C | ØD | weight |
|----------------|-------|------|------|----|--------|
| 34600207 | M5 | 18 | 4 | 8 | 0.004 |
| 34600001 | G1/8* | 22.4 | 5.6 | 13 | 0.010 |
| 34600002 | G1/4* | 41.6 | 8.4 | 16 | 0.030 |
| 34600003 | G3/8* | 49.2 | 8.8 | 24 | 0.030 |
| 34600004 | G1/2* | 54.6 | 11.4 | 27 | 0.070 |
| 34600005 | G3/4* | 82.3 | 12.7 | 36 | 0.300 |
| 34600006 | G1* | 93.5 | 14.5 | 50 | 0.400 |

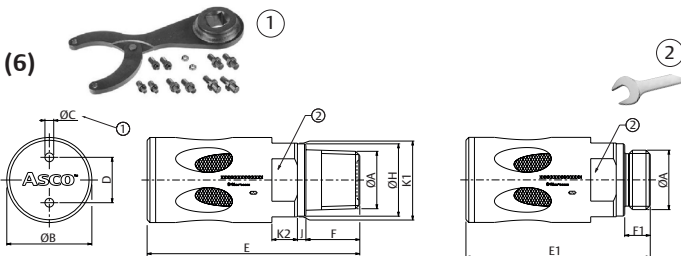
| Catalog number | ØA | B | C | ØD | weight |
|----------------|------|----|------|----|--------|
| 34600491 | M5 | 8 | 3.5 | 8 | 0.002 |
| 34600492 | G1/8 | 11 | 6 | 13 | 0.007 |
| 34600493 | G1/4 | 12 | 8 | 16 | 0.011 |
| 34600494 | G3/8 | 14 | 8 | 19 | 0.016 |
| 34600495 | G1/2 | 16 | 10 | 24 | 0.027 |
| 34600496 | G3/4 | 16 | 10 | 30 | 0.044 |
| 34600497 | G1 | 18 | 11.5 | 36 | 0.065 |



| Catalog number | Ø | A | B | C | weight |
|----------------|------|----|----|----|--------|
| M1MB | G1/8 | 35 | 31 | 11 | 0.009 |
| M2MB | G1/4 | 44 | 39 | 14 | 0.023 |
| M3MB | G3/8 | 57 | 51 | 18 | 0.036 |
| M4MB | G1/2 | 69 | 61 | 22 | 0.068 |
| M5MB | G3/4 | 80 | 71 | 27 | 0.036 |
| M6MB | G1 | 99 | 88 | 33 | 0.227 |

| Catalog number | ØA | B | C | ØD | weight |
|----------------|------|-----|-----|----|--------|
| 34600484 | M5 | 4.5 | 3.2 | 8 | 0.001 |
| 34600418 | G1/8 | 10 | 6 | 13 | 0.006 |
| 34600419 | G1/4 | 11 | 8 | 16 | 0.010 |
| 34600478 | G3/8 | 11 | 9 | 19 | 0.014 |
| 34600479 | G1/2 | 14 | 9 | 24 | 0.023 |

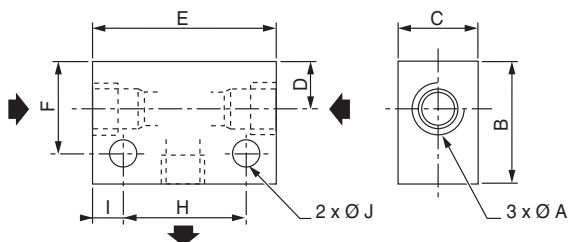
① D: Across flats



| Catalog number | ØA | ØB | ① ØC | ① D | E (NPT) (ISO 7/1) | E1 (ISO 228/1) | F (NPT) (ISO 7/1) | F1 (ISO 228/1) | ØH | J | ② | | weight (kg) |
|-----------------|--------|-----|----------|-----|-------------------|----------------|-------------------|----------------|------|-----|-----|----|-------------|
| | | | | | | | | | | | K1 | K2 | |
| x888A11210A0000 | 1/4" | 18 | 2 x 2.6 | 8 | 61.5 | 43 | 15 | 6.5 | 18 | 2 | 14 | 6 | 0.07 |
| x888A11310A0000 | 3/8" | 25 | 2 x 2.6 | 14 | 60.5 | 53 | 15 | 7.5 | 21 | 2.5 | 21 | 8 | 0.14 |
| x888A11410A0000 | 1/2" | 30 | 2 x 3.1 | 16 | 75 | 65 | 19 | 9 | 25.5 | 3 | 26 | 9 | 0.22 |
| x888A11510A0000 | 3/4" | 45 | 2 x 4.1 | 24 | 95 | 86.5 | 19 | 10.5 | 32 | 3 | 38 | 14 | 0.67 |
| x888A11610A0000 | 1" | 55 | 2 x 6.1 | 32 | 118 | 106.5 | 23 | 11.5 | 38 | 3 | 46 | 14 | 1.20 |
| x888A11710A0000 | 1" 1/2 | 80 | 2 x 8.1 | 48 | 151 | 143.5 | 25 | 17.5 | 55 | 3 | 70 | 20 | 3.2 |
| x888A11810A0000 | 2" | 110 | 2 x 10.1 | 70 | 195 | 189.5 | 25 | 19.5 | 67 | 3.5 | 100 | 28 | 8.0 |

① Pin hole spanner
② Open end spanner

Shuttle Valve



| Catalog number | ØA | B | C | D | E | F | H | I | J | weight |
|----------------|------|----|----|------|----|------|----|-----|-----|--------|
| 34600127 | G1/8 | 26 | 16 | 8.5 | 51 | 20.5 | 32 | 9.5 | 4.5 | 0.150 |
| 34600119 | G1/4 | 30 | 20 | 10.5 | 52 | 21.5 | 35 | 8.5 | 5.5 | 0.210 |

Pneumatic Accessories

Non-Return Valve - Quick Exhaust Valve - Pneumatic Indicator

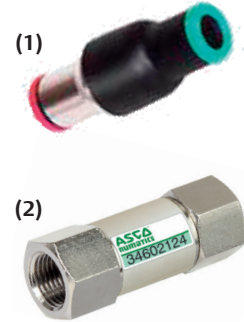
Series
346

Non-Return Valve



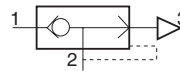
| | |
|----------------------------------|---|
| Fluids | Air or filtered neutral gas, lubricated or not |
| Operating pressure | 1 to 10 bar |
| plastic body | 1 to 10 bar |
| metal body | 0.5 to 10 bar |
| Ambient temperature range | -10°C to +60°C |
| Construction | |
| Body | instant fittings version: Technical polymer tapped version: Brass nickeled |
| Internal parts | Light alloy and brass |
| Seals | NBR (nitrile) |

| pipe size | flow at 6 bar (l/min) | Catalog number |
|--|-----------------------|----------------|
| (1) Plastic body (instant fittings) | | |
| Ø 4 mm (OD) | 330 | 34602445 |
| Ø 6 mm (OD) | 665 | 34602446 |
| Ø 8 mm (OD) | 1630 | 34602447 |
| (2) Metal body (tapped) | | |
| Ø M5 | 190 | 34602412 |
| G 1/8 | 920 | 34602124 |
| G 1/4 | 1650 | 34602125 |
| G 3/8 | 2400 | 34602444 |
| G 1/2 | 3500 | 34602126 |



Quick Exhaust Valve

| | |
|----------------------------------|--|
| Fluid | Air or filtered neutral gas, lubricated or not |
| Operating pressure | 0.5 to 10 bar |
| Ambient temperature range | -10°C to +60°C |
| Construction | |
| Body | Light alloy |
| Diaphragm | NBR (nitrile) |



| pipe size | Ø orifice (mm) | Catalog number |
|-----------|----------------|----------------|
| G 1/4 | 12 | 34600136 |
| G 3/8 | 12 | 34600137 |
| G 1/2 | 20 | 34600138 |
| G 3/4 | 20 | 34600139 |



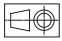
Pneumatic Indicator

| | |
|----------------------------------|--|
| Fluid | Air or filtered neutral gas, lubricated or not |
| Operating pressure | 2 to 8 bar |
| Ambient temperature range | +50°C to +70°C |
| Angle of vision | 180° |
| Construction | |
| Lens | PC (polycarbonate) |
| Body and collar | POM (polyacetal) |
| Nut | Brass |



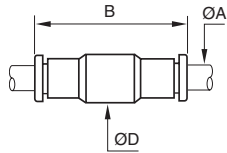
| color | Catalog number |
|--------|----------------|
| red | 34600130 |
| green | 34600131 |
| yellow | 34600132 |



Dimensions (mm), Weight (kg) 

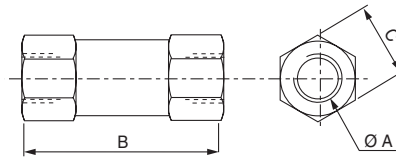
Non-Return Valve

(1) Plastic body (instant fittings)



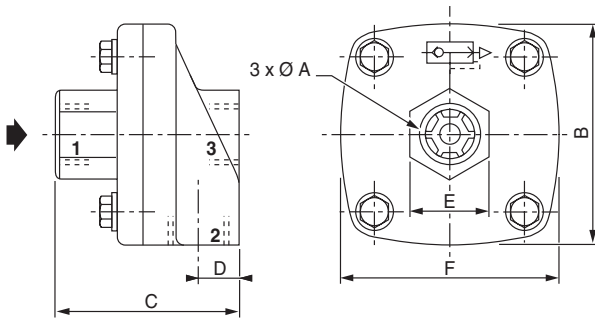
| Catalog number | ØA (OD) | B | C | ØD | weight |
|----------------|---------|------|---|----|--------|
| 34602445 | 4 mm | 38 | - | 16 | 0.008 |
| 34602446 | 6 mm | 41 | - | 16 | 0.013 |
| 34602447 | 8 mm | 51.5 | - | 19 | 0.018 |

(2) Metal body (tapped)



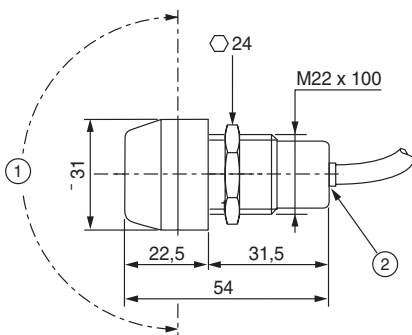
| Catalog number | ØA | B | C | weight |
|----------------|-------|------|-----|--------|
| 34602412 | Ø M5 | 25 | 8 | 0.008 |
| 34602124 | G 1/8 | 36.5 | 13 | 0.025 |
| 34602125 | G 1/4 | 41 | -16 | 0.041 |
| 34602444 | G 3/8 | 51 | 20 | 0.074 |
| 34602126 | G 1/2 | 62 | 24 | 0.120 |

Quick Exhaust Valve



| Catalog number | ØA | B | C | D | E | F | weight |
|----------------|------|----|----|----|----|----|--------|
| 34600136 | G1/4 | 64 | 52 | 13 | 25 | 64 | 0.185 |
| 34600137 | G3/8 | 64 | 52 | 13 | 25 | 64 | 0.185 |
| 34600138 | G1/2 | 85 | 72 | 19 | 38 | 97 | 0.420 |
| 34600139 | G3/4 | 85 | 72 | 19 | 38 | 97 | 0.390 |

Pneumatic Indicator



| Catalog number | weight |
|----------------|--------|
| 34600130 | 0.035 |
| 34600131 | |
| 34600132 | |

- ① Angle of vision 180°
- ② Instant fittings for flexible tube Ø 4 mm OD