



FASANI PRESSURE SEAL CAST CHECK VALVES - STYLE B

SWING CHECK, TILTING DISC AND PISTON CHECK CONFIGURATION

A wide range of check valves specifically designed for high pressure and high temperature applications



FEATURES

- A range of pressure seal check valves designed according to ASME B16.34 with wall thickness according to API 600.
- All range is offered in all the material stated in the ASTM specifications (NACE compliance included), and designed to always guarantee the maximum safety and flow efficiency.
- Face to face dimensions as per ASME B16.10
- Available in swing check, tilting disc and piston check (Y and T pattern design)
- Swing check valves can fit on both horizontal and vertical (up-flow) piping.
- Tilting disc check valves are designed to prevent the disc slamming and to ensure, at the same time, a quick closing service.
- Lift check valves (Y and T patterns) are designed to be installed on horizontal piping.
- Seat is welded in
- Available options: side mounted counterweight, side mounted hydraulic damper and disc anti-rotation device.

GENERAL APPLICATION

Our pressure seal check valves are recommended for a wide range of applications, particularly those requiring very high pressures and temperatures: steam, oil and gas processing, chemical and petrochemical industry and in the power industry. These high quality valves are successfully installed worldwide on applications requiring flow reversal prevention.

TECHNICAL DATA

Sizes: DN 50 to 600 and larger (NPS 2-24)
Temperature (°C): -46 to + 650
Pressure ratings: ASME Class 900, 1500 and 2500 for Swing Check type
ASME Class 600, 900, 1500 and 2500 for Tilting Disc type
ASME Class 600, 900, 1500 and 2500 for Piston Check T pattern
ASME Class 900, 1500 and 2500 for Piston Check Y pattern
Body materials: All the cast materials stated in the ASTM spec

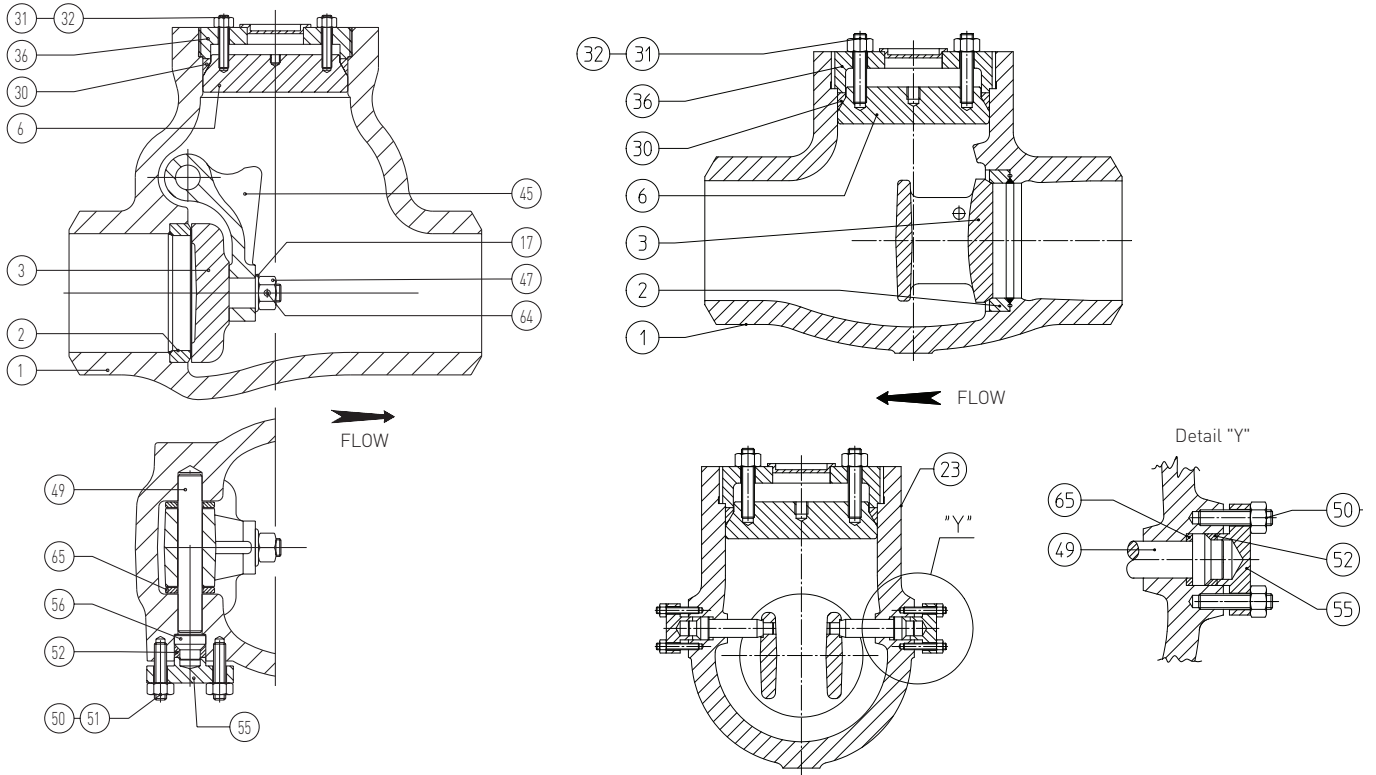
Connections standards

Butt Weld according to ASME B16.25.
Flanged Ends available for Swing Check, Tilting Disc, Piston check T pattern, according to ASME B16.5

FASANI PRESSURE SEAL CAST CHECK VALVES - STYLE B

SWING CHECK, TILTING DISC AND PISTON CHECK CONFIGURATION

SWING CHECK VALVES



MATERIAL SELECTION

Item	Description	Body in WCB	Body in WC6	Body in CF8M
1	Body	A216 WCB	A217 WC6	A351 CF8M
2	Seat ring	A105 + AWS ER 430	A182 F22 + AWS ER 430	A182 F316
3	Disc	A216 WCB + AWS ER 430	A217 WC6 + AWS ER 430	A351 CF8M
6	Bonnet	A105	A182 F11	A182 F316
17	Washer	A182 F316	A182 F316	A182 F316
30	P.S. gasket	Soft iron silver plated	Soft iron silver plated	A182 F316
31	Bolt	A193 B7	A193 B16	A193 B8
32	Nut	A194 2H	A194 4	A194 8
36	Bonnet retaining ring	A105	A182 F11	A182 F316
45	Hinge	A216 WCB	A217 WC6	A351 CF8M
47	Nut	A194 2H	A194 4	A194 8
49	Hinge pin	A182 F6a	A182 F6a	A182 F316
50	Bolt	A193 B7	A193 B16	A193 B8
51	Nut	A194 2H	A194 4	A194 8
52	Pin gasket	Flexible graphite	Flexible graphite	Flexible graphite
55	Hinge pin cover	A105	A182 F22	A182 F316
56	Hinge pin plug	A182 F6a	A182 F6a	A182 F316
64	Split pin	Steel	Steel	Stainless steel
65	Spacer ring	A182 F6a	A182 F6a	A182 F316

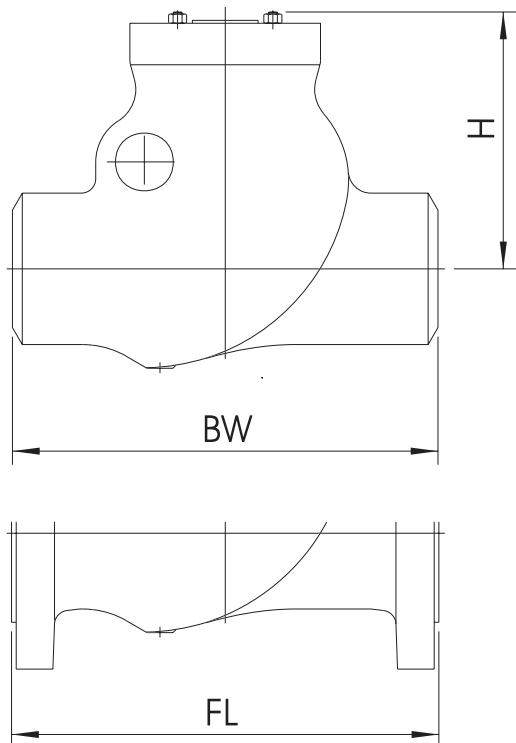
NOTES

- Other materials are available on request.
Please consult supplier.

FASANI PRESSURE SEAL CAST CHECK VALVES - STYLE B

SWING CHECK, TILTING DISC AND PISTON CHECK CONFIGURATION

SWING CHECK CONFIGURATION



Size	ASME class 900 (Fig. VR 900 PS)						ASME class 1500 (Fig. VR 1500 PS)					ASME class 2500 (Fig. VR 2500 PS)				
	DN	NPS	FL	BW	H	W1	W2	FL	BW	H	W1	W2	FL	BW	H	W1
50	2	-	-	-	-	-	368	368	205	45	32	451	451	235	90	48
65	2½	-	-	-	-	-	419	419	220	80	48	508	508	240	140	78
80	3	381	381	235	70	47	470	470	250	95	58	578	578	285	160	98
100	4	457	457	265	135	72	546	546	295	150	100	673	673	310	220	148
125	5	-	-	-	-	-	-	-	-	-	-	-	-	-	-	-
150	6	610	508	370	275	160	705	559	390	370	220	914	610	415	610	305
200	8	737	660	450	470	300	832	711	470	640	425	1022	762	555	1300	655
250	10	838	787	500	625	460	991	864	535	1250	700	1270	914	640	1900	985
300	12	965	914	555	950	690	1130	991	610	1750	1130	1422	1041	665	2850	1410
350	14	1029	991	620	1400	960	1257	1067	700	2400	1455	-	1118	600	-	1800
400	16	1130	1092	680	1650	1290	1384	1194	770	3235	1970	-	1245	700	-	2300
450	18	1219	1143	730	2230	1750	1537	1346	830	3880	2890	-	1397	770	-	2770
500	20	1321	1245	780	2850	2290	1664	1473	850	5510	3800	-	1524	840	-	3340
550	22	-	-	-	-	-	-	-	-	-	-	-	-	-	-	-
600	24	1549	1397	850	4300	3530	1943	1752	980	7400	5000	-	1676	950	-	4660

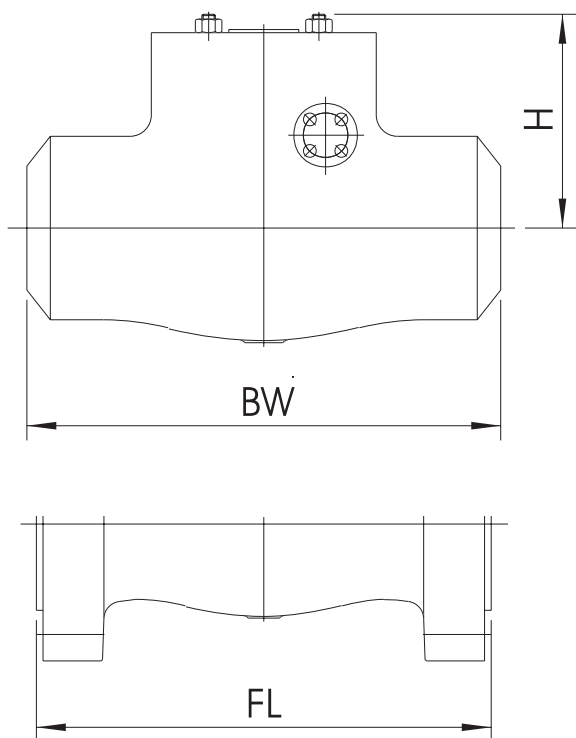
NOTES

1. All dimensions are in mm.
2. Sizes and classes larger than mentioned here are available: please consult supplier for more information.
3. W1 corresponds to weight in kilos for flanged body style. For sizes larger than NPS 24, weight depends on flange standards.
4. W2 corresponds to weight in kilos for welding body style.

FASANI PRESSURE SEAL CAST CHECK VALVES - STYLE B

SWING CHECK, TILTING DISC AND PISTON CHECK CONFIGURATION

TILTING DISC CONFIGURATION



Size	ASME class 900 (Fig. TD 900 PS)						ASME class 1500 (Fig. TD 1500 PS)					ASME class 2500 (Fig. TD 2500 PS)					
	DN	NPS	FL	BW	H	W1	W2	FL	BW	H	W1	W2	FL	BW	H	W1	W2
80	3		381	305	170	55	35	470	305	185	77	40	578	368	160	120	40
100	4		457	356	200	100	65	546	406	205	125	75	673	457	190	235	120
125	5		-	-	-	-	-	-	-	-	-	-	-	-	-	-	-
150	6		610	508	250	215	115	705	559	235	275	155	914	610	245	620	300
200	8		737	660	280	345	200	832	711	295	450	290	1022	762	330	990	550
250	10		838	787	330	500	330	991	864	330	940	510	1270	914	330	1725	900
300	12		965	914	365	790	560	1130	991	400	1435	835	1422	1041	430	2400	1300
350	14		1029	991	400	1120	720	1257	1067	490	2010	1230	-	1118	480	-	1900
400	16		1130	1092	430	1500	1200	1384	1194	570	2130	1560	-	1245	520	-	2820
450	18		1219	1143	470	2160	1650	1537	1346	630	2491	2070	-	1397	550	-	3410
500	20		1321	1245	550	2750	2150	1664	1473	660	4000	2740	-	1524	590	-	4330
550	22		-	-	-	-	-	-	-	-	-	-	-	-	-	-	-
600	24		1549	1397	730	4270	3280	1943	1752	780	6435	4635	-	1676	780	-	6070

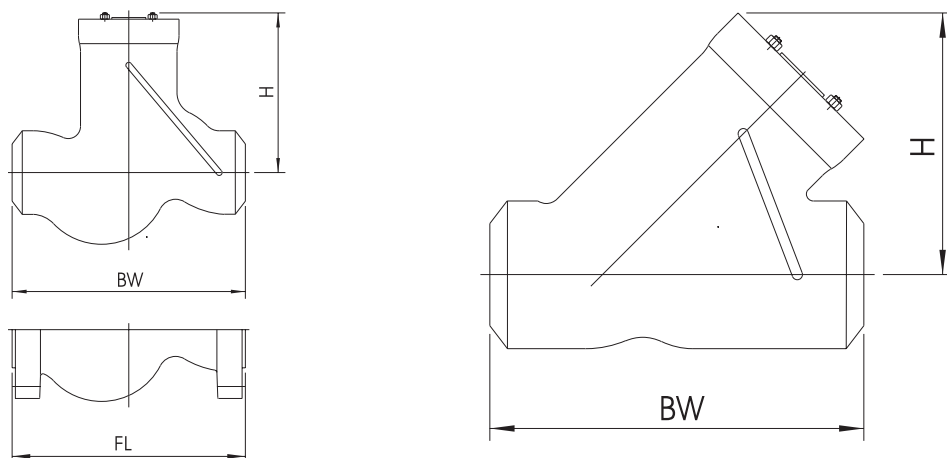
NOTES

1. All dimensions are in mm.
2. Sizes and classes larger than mentioned here are available; please consult supplier for more information.
3. W1 corresponds to weight in kilos for flanged body style. For sizes larger than NPS 24, weight depends on flange standards.
4. W2 corresponds to weight in kilos for welding body style.

FASANI PRESSURE SEAL CAST CHECK VALVES -STYLE B

SWING CHECK, TILTING DISC AND PISTON CHECK CONFIGURATION

STOP CHECK CONFIGURATION



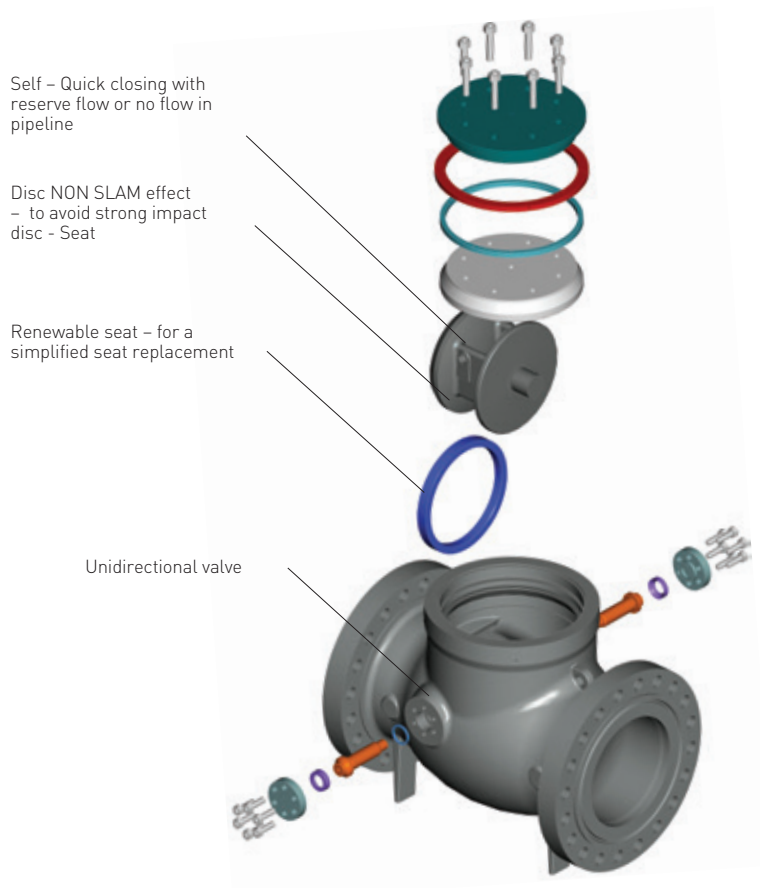
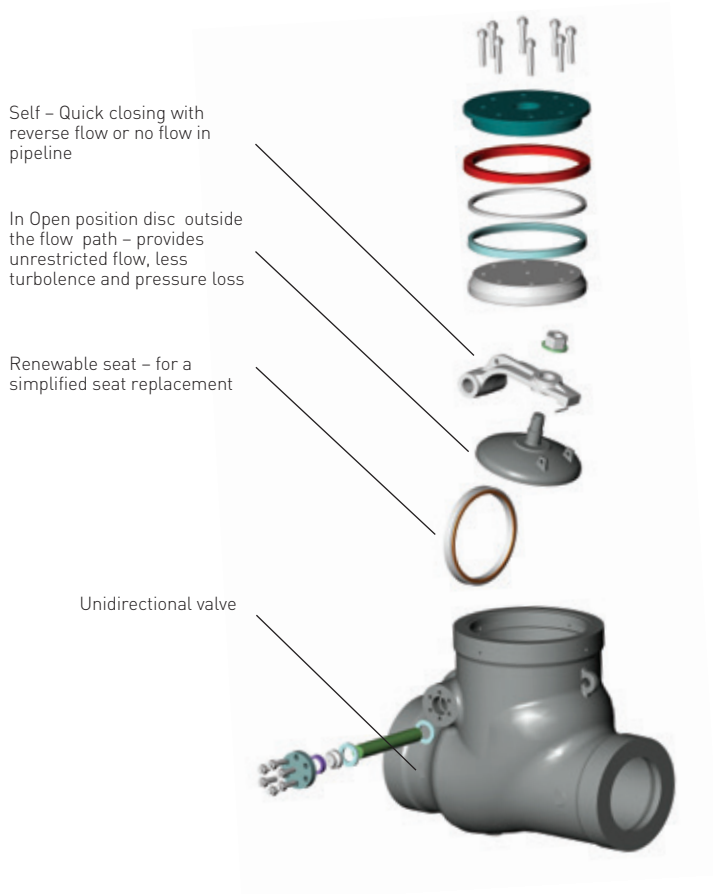
Size	ASME class 900 (Fig. PC 900 PS)						ASME class 1500 (Fig. PC 1500 PS)					ASME class 2500 (Fig. PC 2500 PS)					ASME class 1500 (Fig. PY 1500 PS)			ASME class 2500 (Fig. PY 2500 PS)					
	DN	NPS	T pattern		H	W1	W2	FL	BW	H	W1	W2	FL	BW	H	W1	W2	Y pattern		BW	H	W	BW	H	W
50	2	-	-	-	-	-	368	368	240	60	40	451	451	330	70	60	-	-	-	-	-	-	-	-	-
65	2½	-	-	-	-	-	419	419	275	80	55	508	508	260	115	65	-	-	-	-	-	-	-	-	-
80	3	381	381	270	65	50	470	470	280	100	65	578	578	280	185	100	381	250	50	368	240	85	-	-	-
100	4	457	457	335	135	95	546	546	335	155	100	673	673	330	355	170	406	290	85	457	320	130	-	-	-
125	5	-	-	-	-	-	-	-	-	-	-	-	-	-	-	-	-	-	-	-	-	-	-	-	-
150	6	610	610	400	250	190	705	705	390	280	245	914	914	390	720	435	559	360	215	610	350	330	-	-	-
200	8	737	737	490	445	300	832	832	470	660	500	1022	1022	460	1100	610	711	440	430	762	460	645	-	-	-
250	10	838	838	565	695	480	991	991	580	890	610	1270	1270	580	1540	840	864	590	660	914	610	1025	-	-	-
300	12	965	965	665	1045	760	1130	1130	680	1380	850	1422	1041	640	2090	960	991	640	960	1041	650	1200	-	-	-
350	14	-	-	-	-	-	-	-	-	-	-	-	-	-	-	-	-	1067	700	1000	1130	720	1360	-	-
400	16	-	-	-	-	-	-	-	-	-	-	-	-	-	-	-	-	1194	750	1550	1245	800	2150	-	-
450	18	-	-	-	-	-	-	-	-	-	-	-	-	-	-	-	-	1473	810	1800	1397	870	2975	-	-
500	20	-	-	-	-	-	-	-	-	-	-	-	-	-	-	-	-	1676	890	2490	1524	960	3630	-	-
550	22	-	-	-	-	-	-	-	-	-	-	-	-	-	-	-	-	-	-	-	-	-	-	-	-
600	24	-	-	-	-	-	-	-	-	-	-	-	-	-	-	-	-	1727	1050	3000	1829	1220	5650	-	-

NOTES

1. All dimensions are in mm.
2. Sizes and classes larger than mentioned here are available: please consult supplier for more information.
3. W1 corresponds to weight in kilos for flanged body style.
4. W2 corresponds to weight in kilos for welding body style.

FASANI PRESSURE SEAL CAST CHECK VALVES - STYLE B

SWING CHECK, TILTING DISC AND PISTON CHECK CONFIGURATION



FASANI PRESSURE SEAL CAST CHECK VALVES - STYLE B

SWING CHECK, TILTING DISC AND PISTON CHECK CONFIGURATION

SWING CHECK VALVE ORDERING GUIDE

Example	6C	0	R	06	30	0	B2	H	N
Valve Type									
6C	Swing Check								
Valve Configuration									
0	Basic								
Valve Rating									
E	ASME 900								
F	ASME 1500								
R	ASME 1200								
G	ASME 2500								
S	ASME 1900								
U	ASME 2850								
Nominal Valve Size									
02	2"	10	10"	20	20"				
25	2½"	AH	10"x8"x10"	BH	20"x18"x20"				
03	3"	12	12"	22	22"				
KB	3"x2"x3"	AL	12"x10"x12"	BL	22"x20"x22"				
04	4"	14	14"	24	24"				
KC	4"x3"x4"	AB	14"x12"x14"	BB	24"x22"x24"				
06	6"	16	16"						
K4	6"x4"x6"	AD	16"x14"x16"						
08	8"	18	18"						
KF	8"x6"x8"	AF	18"x16"x18"						
Body Material									
30	ASTM A216 WCB			65	ASTM A351 CF8M				
38	ASTM A217 C12A			73	A352 LCB				
44	ASTM A217 WC6			78	ASTM A494 CW-6MC				
45	ASTM A217 WC9			99	ASTM A890 Gr 5A				
62	ASTM A351 CF8C			XY*	Other material				
Cladding									
0	No Cladding								
2	Sealing Gasket Area F316								
Trim									
B2	13% Cr. + 2 Stellite								
D2	F316 + 2 Stellite								
WZ*	Other material								
Pipe Connection									
A	FLANGED PER ASME B16.5								
H	WELD END ASME B16.25								
J	WELD END EN 12267								
K	WELD END ISO 9692								
Standard Valve Operation									
N	None								

* Other material available upon request.