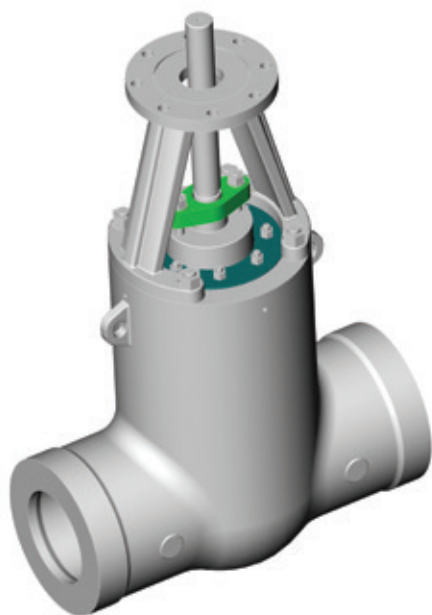




FASANI PRESSURE SEAL CAST GATE VALVES - STYLE B WEDGE GATE

A wide range of gate valves specifically designed for high pressure and high temperature applications.



FEATURES

- A range of compact pressure seal gate valves designed according to ASME B16.34 and wall thickness according to API 600.
- All range is offered in all the material stated in the ASTM specifications (NACE compliance included), and designed to always guarantee the maximum safety and flow efficiency.
- End to end dimensions as per ASME B16.10 (Long pattern for flanged valves, short pattern for Butt welded ends).
- Seats are welded in.
- Position indicator is offered as standard.
- Stellite® gr. 6 overlay on seat and wedge; Stellite® gr. 21 overlay on backseat.
- Pressure seal gasket has trapezoidal shape for a low load on bolting, and is supplied in integral metal type.
- Standard ISO top mounting for easy assembly of any type of actuator or bevel gear.
- Available options: wedge vent hole or overpressure pipe, by-pass, limit switch in open or closed position.
- Valves are offered as standard with manual operators (Hand wheel or bevel gear depending on size). Actuated options such as electric, pneumatic or hydraulic are available.

GENERAL APPLICATION

Our pressure seal gate valves are recommended for a large variety of applications, particularly in those requiring suitability to very high pressures and temperatures: steam, oil and gas processing, chemical and petrochemical industry and in the power industry. These high quality valves are successfully installed worldwide on applications requiring tight shutoff.

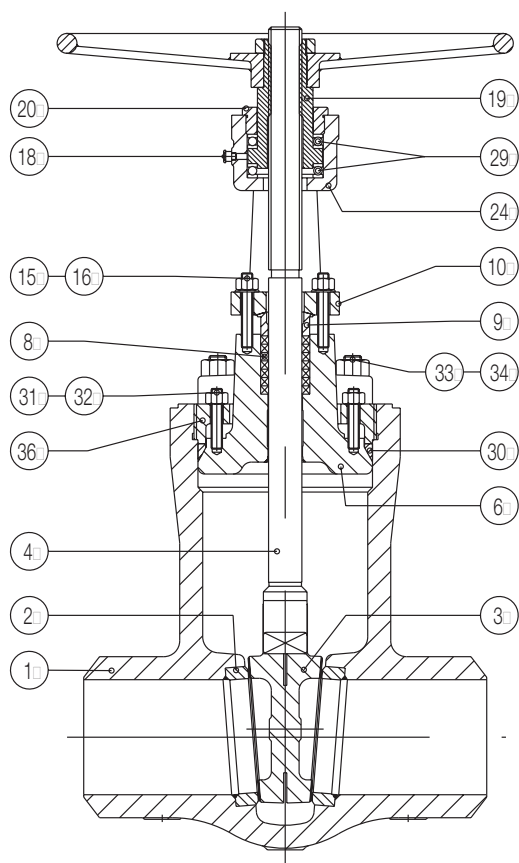
TECHNICAL DATA

Sizes: DN 50 - 600 (NPS 2 - 24), larger diameters available upon request
Temperature (°C): -46 to + 650
Pressure ratings: ASME Class 600, 900, 1500 and 2500
Body materials: All the cast materials stated in the ASTM spec

Connections standards:
Butt weld according to ASME B16.25
Flanged Ends according to ASME B16.5
Special connections, such as clamp type, available upon request.

FASANI PRESSURE SEAL CAST GATE VALVES - STYLE B

WEDGE GATE



MATERIAL SELECTION

Item	Description	Body in WCB	Body in WC6	Body in CF8M
1	Body	A216 WCB	A217 WC6	A351 CF8M
2	Seat ring	A105 + Stellite®	A182 F22 + Stellite®	A182 F316
3	Gate	A216 WCB + Stellite®	A217 WC6 + Stellite®	A351 CF8M
4	Stem	A182 F6a	A182 F6a	A182 F316
6	Bonnet	A216 WCB + Stellite®	A217 WC6 + Stellite®	A351 CF8M
8	Packing	Flexible graphite inner rings and suitable anti-extrusion rings		
9	Gland	A182 F6a	A182 F6a	A182 F316
10	Gland flange	A105 or A516 gr. 70	A105 or A516 gr. 70	A182 F316 or A240 Tp. 316
15	Gland bolt	A193 B7	A193 B7	A193 B8
16	Gland nut	A194 2H	A194 2H	A194 8
18	Lubricator	Steel	Steel	Steel
19	Yoke sleeve	A763 gr. A	A763 gr. A	A763 gr. A
20	Yoke nut bushing	A105	A105	A105
24	Yoke	A216 WCB	A216 WCB	A216 WCB
29	Bearings	Steel	Steel	Steel
30	P.S. gasket	Soft iron silver plated	Soft iron silver plated	A182 F316
31	Bolt	A193 B7	A193 B16	A193 B8
32	Nut	A194 2H	A194 4	A194 8
33	Body - yoke bolt	A193 B7	A193 B7	A193 B7
34	Body - yoke nut	A194 2H	A194 2H	A194 2H
36	Bonnet retaining ring	A105	A182 F22	A182 F316

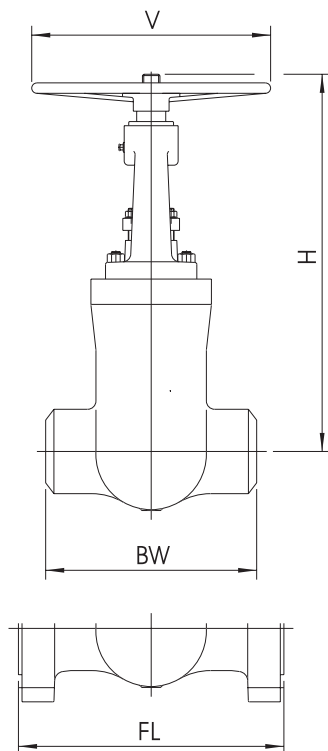
NOTES

- Other materials are available on request.
Please consult supplier.

FASANI PRESSURE SEAL CAST GATE VALVES - STYLE B

WEDGE GATE

PRESSURE SEAL CONFIGURATION



NOTES

1. All dimensions are in mm.
2. Gate valves in sizes and classes larger than mentioned here are available. Please consult supplier for more information.
3. Dim. H corresponds to the height of valve in open position.
4. BGO stands for "Bevel Gear Operator".
5. Kg1 corresponds to weight in kilos for flanged body style. For sizes larger than NPS 24, weight depends on flange standards.
6. Kg2 corresponds to weight in kilos for welding body style.

Size	DN	NPS	ASME class 900 (Fig. VS 900 PS)						ASME class 1500 (Fig. VS 1500 PS)						ASME class 2500 (Fig. VS 2500 PS)					
			FL	BW	H	V	Kg1	Kg2	FL	BW	H	V	Kg1	Kg2	FL	BW	H	V	Kg1	Kg2
50	2	-	-	-	-	-	-	368	216	515	350	60	40	451	279	620	400	105	65	
65	2½	-	-	-	-	-	-	419	254	645	350	100	70	508	330	650	400	160	95	
80	3	381	305	655	400	105	80	470	305	665	500	120	80	578	368	720	500	190	110	
100	4	457	356	780	500	180	125	546	406	775	575	190	135	673	457	865	575	290	175	
125	5	-	-	-	-	-	-	-	-	-	-	-	-	794	533	900	575	550	300	
150	6	610	508	1050	575	330	240	705	559	1155	650	455	320	914	610	1140	750	695	375	
200	8	737	660	1340	750	590	415	832	711	1380	750	900	595	1022	762	1285	900	1070	750	
250	10	838	787	1520	750	840	655	991	864	1560	900	1350	990	1270	914	1555	BGO	2050	1225	
300	12	965	914	1710	BGO	1300	1015	1130	991	1760	BGO	2000	1435	1422	1041	1640	BGO	2900	1605	
350	14	1029	991	1800	BGO	1650	1315	1257	1067	1800	BGO	2600	1785	-	1118	1750	BGO	-	1930	
400	16	1130	1092	2005	BGO	2070	1710	1384	1194	1920	BGO	3400	2315	-	1245	2080	BGO	-	2750	
450	18	1219	1143	2080	BGO	2600	2030	1537	1346	2250	BGO	4100	2980	-	1397	2150	BGO	-	3880	
500	20	1321	1245	2155	BGO	3340	2650	1664	1473	2470	BGO	5920	4665	-	1524	2350	BGO	-	6020	
550	22	-	-	-	BGO	-	-	-	-	-	BGO	-	-	-	-	-	BGO	-	-	
600	24	1549	1397	2820	BGO	5500	4050	1943	1943	2620	BGO	8460	6665	-	1676	2450	BGO	-	8170	

FASANI PRESSURE SEAL CAST GATE VALVES - STYLE B

WEDGE GATE

Standard ISO top mounting for easy assembly of any type of actuator or bevel gear

Pressure seal gasket developed with trapezoidal shape in graphite with integral stainless steel anti extrusion protection, for a low load on bolting

Backseats, for easy maintenance without interrupting production time

Rising stem - provides unrestricted flow with the disc completely outside the flow path

Integral T-head stem connection to the wedge - provides positive connection between stem and disc during all operating conditions.

Wedge guiding in the body for all the valve stroke - to ensure alignment of the disc with the seats, avoiding scratch or incorrect positioning

Renewable seats - for a simplified seats replacement

Bi-directional, except for the one equipped with by-pass and/or over pressure pipe



FASANI PRESSURE SEAL CAST GATE VALVES - STYLE B

WEDGE GATE

WEDGE UNIQUENESS CODES

Old code	New uniqueness codes
VS600PSB	1B0D*****
VS900PSB	1B0E*****
VS1500PSB	1B0F*****
VS2500PSB	1B0G*****

ORDERING GUIDE

Example:	1B	0	E	06	30	0	B2	H	A
Valve type									
1B Gate - Flexible wedge									
Valve configuration									
0 Basic									
Valve rating									
D ASME 600	F ASME 1500								
E ASME 900	G ASME 2500								
Nominal valve size									
02 2"	10 10"		22 22"						
25 2½"	12 12"		24 24"						
03 3"	14 14"		26 26"						
04 4"	16 16"		28 28"						
06 6"	18 18"		30 30"						
08 8"	20 20"								
Body material									
30 ASTM A216 WCB	65 ASTM A351 CF8M								
38 ASTM A217 C12A	73 A352 LCB								
44 ASTM A217 WC6	78 ASTM A494 CW-6MC								
45 ASTM A217 WC9	99 ASTM A890 Gr 5A								
62 ASTM A351 CF8C	XY* Other material								
Cladding									
0 No Cladding									
2 Sealing Gasket Area F316									
Trim									
B2 13% Cr. + 2 Stellite									
D2 F316 + 2 Stellite									
WZ* Other material									
Pipe connection									
A Flanged per ASME B16.5									
H Weld End ASME B16.25									
J Weld End EN 12267									
K Weld End ISO 9692									
Standard valve operation									
A Handwheel									
B Bevel gear									
C Bare shaft (Coupling type A)									
E Bare shaft for linear actuator									

* Other material available upon request.

