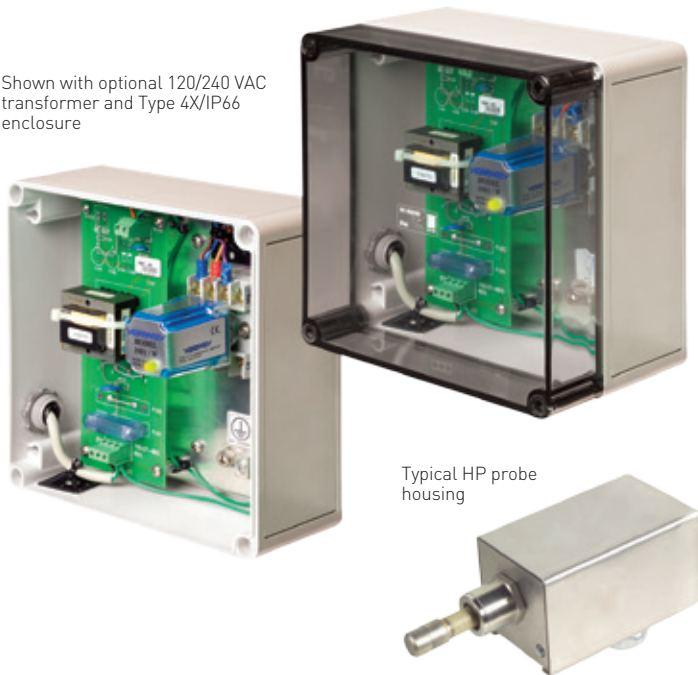




YARWAY SERIES 1001 ELECTRONIC LEVEL INDICATION

A multi-featured single probe alarm system for sensing water level in various applications

Shown with optional 120/240 VAC transformer and Type 4X/IP66 enclosure



Typical HP probe housing

FEATURES

- Based on widely accepted conductivity probe technology.
- Reliable and cost-effective.
- Probe can be mounted directly to the pressure vessel or column.
- HP probes feature brazed welded stainless steel electrode with zirconia insulator for high pressure, high temperature applications.
- LP probes feature threaded stainless steel electrode with PTFE insulator for lower pressure and temperature applications.
- Direct replacement for mechanical float switches.
- Local LED indication of water level provides either redundant or primary visual verification.

GENERAL APPLICATIONS

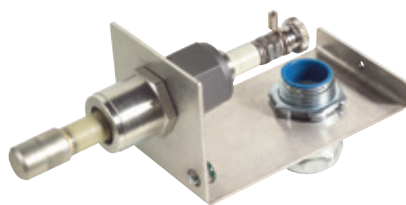
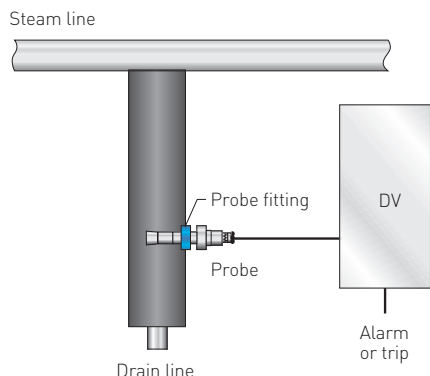
Suitable for use in turbine water intrusion protection, sump pump protection, boiler drum level, equipment drains and receiver tanks. Also for flash tanks, feedwater heaters, steam line drain pots and as an economical solution for high pressure systems.

TECHNICAL DATA

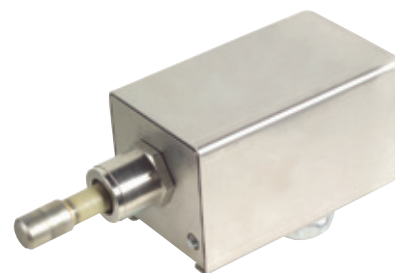
Max. pressures	
HP probe:	3000 psig (207 barg) at saturation
LP probe:	850 psig (58 barg)
Max temperatures	
HP probe:	1000°F (538°C)
LP probe:	525°F (274°C)
Operating temperature:	0°F to 160°F (-17°C to 71°C)
Input voltage:	24 VAC nominal, 50-60 Hz

YARWAY SERIES 1001 ELECTRONIC LEVEL INDICATION

SYSTEM COMPONENTS



Typical HP probe housing, with cover removed
(probe and fittings not included)



Typical HP probe housing
(probe and fittings not included)

- Probe fitting
- Probe
- Detection and verification (DV) module

SPECIFICATIONS

- Single level switch applications.
- Single probe, single output relay module.
- Low voltage sine wave used for water detection (<17 VAC RMS nominal).
- Net integral zero current waveform. No DC = no possibility of electrolysis of water or plating.
- Local red/green LED indication.
- Available with water column or custom piping stub, fitting, spool piece, sight flow indicator (within temperature limits) or with fittings for welding or threading to existing piping.
- All electronics are potted into a plug-in octal pin base relay housing.

- Maximum sensitivity: 10 μ S/0.1M Ω - cm water
- Input voltage: 24 VAC nominal, 50-60 Hz. Unit incorporates MOV protection.
- Relay contact: Form C, SPDT
5A at 120 VAC
5A at 30 VAC
- Available as either steam fail-safe (1001/S) or water fail-safe (1001/W); specify when ordering.
- Operating temperature (electronics): 0 to 160°F (-17 to 71°C).

Standard assembly

- Electronic module (1001/S or 1001/W)
- Probe
- Probe cover, including:
 - 36" (910 mm) of HT wire
 - 20" (500 mm) conduit
- Type "A" or NPS 1½ (40 mm) Male SW connector (for HP probe) OR
- NPS ¾ (20 mm) male SW connector or NPS 1½ (40 mm) male SW connector (for LP probe)

Optional

- NPS 1½ (40 mm) connector welded in NPS 1½ (40 mm) tee (ANSI Class 3000 for LP probe, class 6000 or 9000 for HP probe).
- 120/240 VAC to 24 VAC transformer and electronics in Type 4X/IP66 enclosure.
- Custom fitting with electrode holder.

