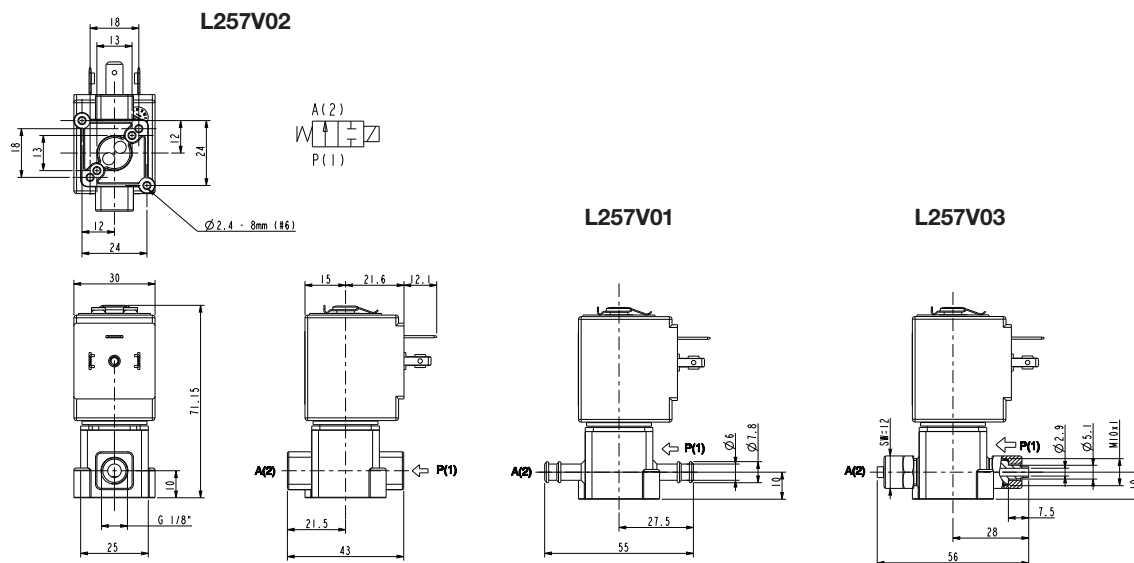


ASCO™ SOLENOID VALVE

2/2 NORMALLY OPEN – DIRECT ACTING - G1/8 - BARBED PORTS

SERIES
L257



General Features

Direct acting solenoid valve, suitable for vacuum at port “P” (PA – PP = max 1 bar).
Suitable to shut off liquid and gaseous fluids; suitable for low pressure steam and applications in sterilising autoclaves (verify the compatibility of fluid with materials in contact).

Technical Features	
Maximum allowable pressure (PS)	10 bar
Opening time	~20ms
Closing time	~20ms
Fluid temperature	0°C +130°C
Max viscosity	5°E (~37 cStokes or mm ² /s)

Materials in Contact with Fluid	
Body	PPS
Sealing	FPM
Internal components	Stainless steel and PPS
Seat	PPS
Core tube	Stainless steel
Shading coil	Copper

Coil		
Approval	UL (class F) – for UL cl.H: ZA34 (E153691)	
Continuous duty	ED 100%	
Encapsulation material	PPS (Polyphenylsulfure) fiberglass reinforced	
Insulation class	F (155°C) on request class H (180°C)	
Ambient temperature	-10°C +50°C	
Electric connection	DIN 46340 - 3 poles connectors (EN175301-803)	
Protection degree	IP 67 (EN 60529) with plug connector	
Voltages	DC	12-24V (+10% -5%)
	AC	24V/50Hz - 110V/50Hz (120V/60Hz) - 230V/50Hz (+10% -15%) (Other voltages and frequencies on request)

Port size G=ISO228	Orifice size (mm)	Δp min	Differential pressure (bar)				Kv (m ³ /h)	Series and type		Power absorption			Sealings	Notes	Weight (kgs)
			Δp max					Valve	Coil	AC (VA)		DC (W)			
			Gases		Liquids					Inrush	Holding				
Barbed ports G1/8	3	0	AC	DC	AC	DC	L257V01 L257V02	ZA10A	23	14	9	FPM	1 - 2 1 - 2 - 3	0,210	
Barbed ports with ring nut			3	3	3	3									L257V03

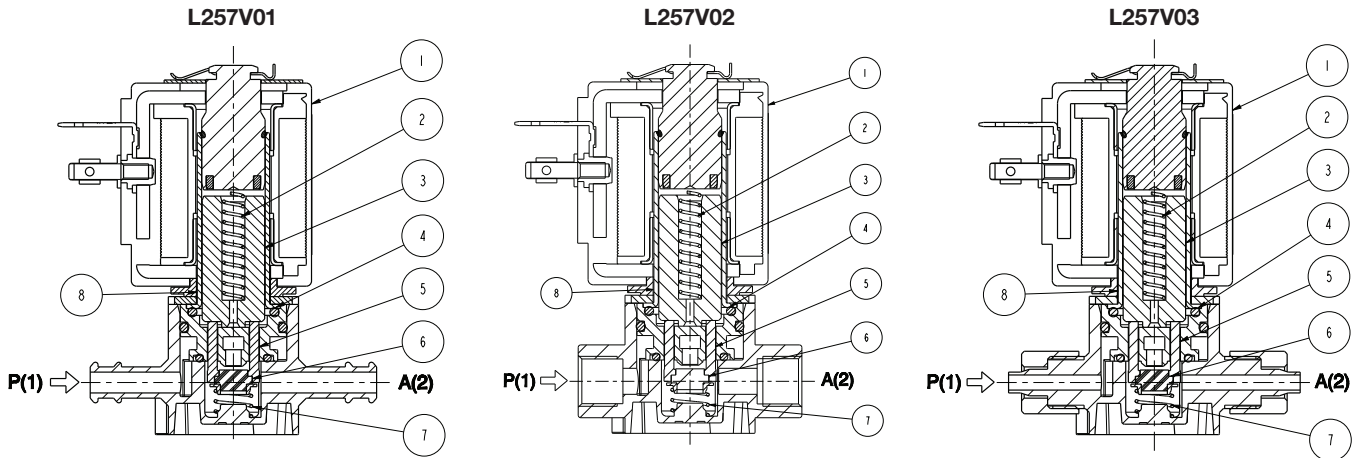
Notes

- Sealings : FPM = Fluoro-carbon elastomer
- IMQ CSV approval, see ZA10 datasheet for further details
- 1 - The pressure values shown in the table refer to the potential of the valve: they can be lower depending on the connection system used
- 2 - Only for use with steam, consider following values: P_{Sm}max 2,8 bar (max fluid temperature 130°C)
- 3 - Maximum driving torque of the pipe fittings for thread connections = 2Nm
- 4 - Maximum driving torque of ring nut 1,2Nm

**SERIES
L257**

ASCO™ SOLENOID VALVE
2/2 NORMALLY OPEN – DIRECT ACTING - G1/8 - BARBED PORTS

Spare Parts



Kit description	Kit P.N.	Consisting of:
Core kit	G3138301	Core return spring pos. 2 Core pos. 3 O-Ring guide assembly pos.4 Pusher pos. 5 Sealing disc return spring pos. 7 Sealing disc pos. 6
Core return spring kit	G290513-001	N°.10 Core return spring pos. 2
O-Ring guide assembly kit	GU2428000015	N°.10 OR guide assembly pos. 4
Guide assembly kit	G31488	Guide assembly pos.8 Coil clip
Coil	ZA10A	Coil pos.1

Installation

- Solenoid valve can be mounted in any position; vertical with coil upwards preferred.
- When using any sealant for fittings, please check its chemical compatibility with body material (PPS).
- In case of disassembling for usual maintenance, the fixing screws of the guide assembly have to be tightened with 0,6±0,7 Nm torque.

THE VALIDITY OF REPORTED DATA IS REFERRED TO THE DATE OF ISSUE. POSSIBLE UPDATES ARE AVAILABLE ON REQUEST