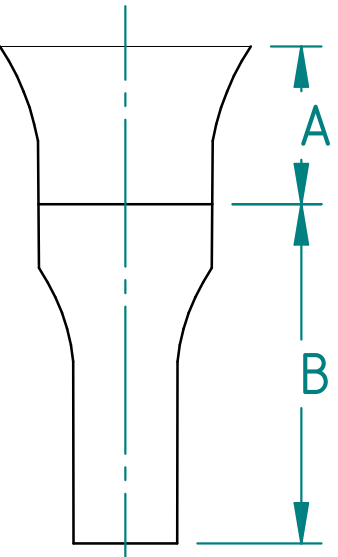
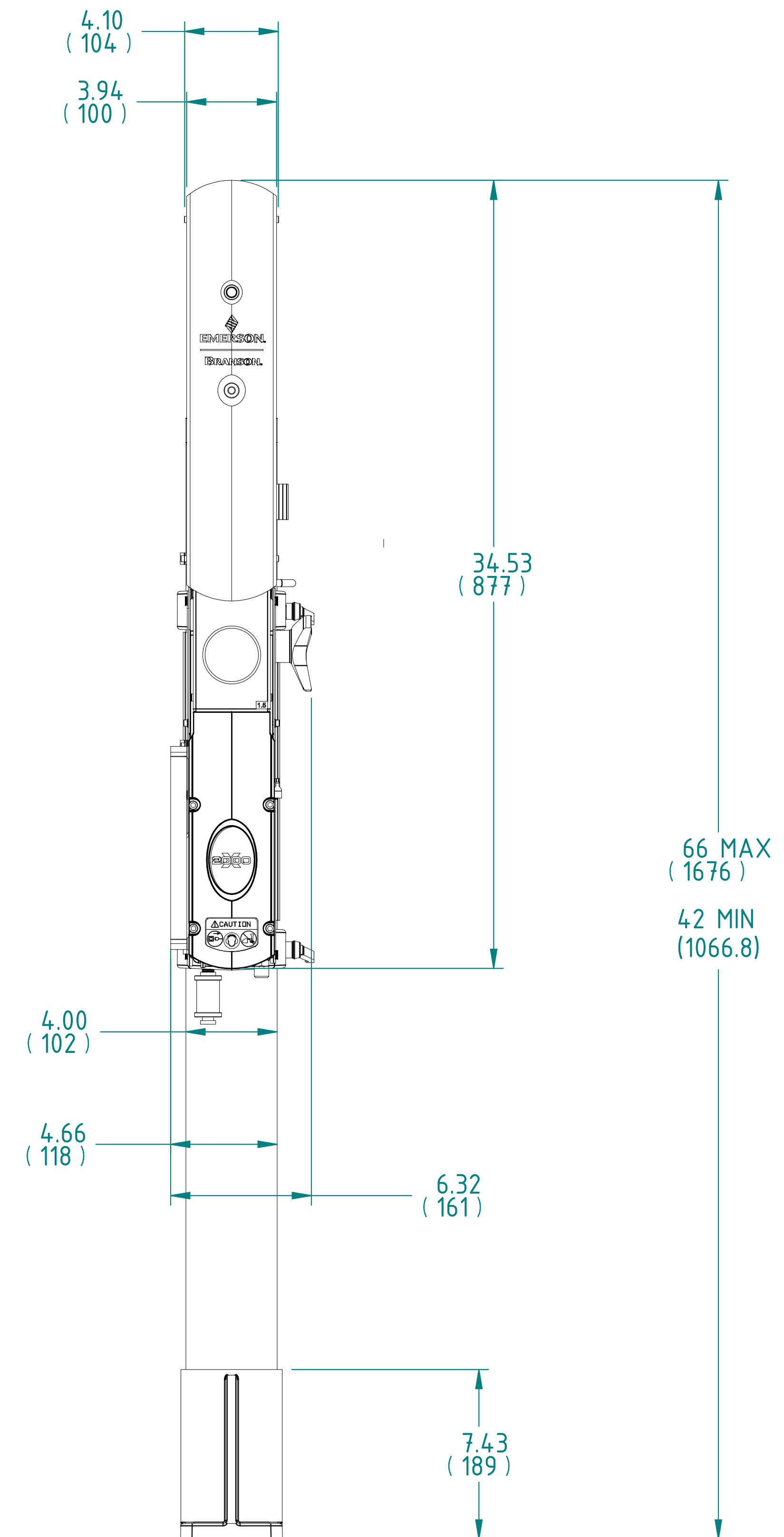
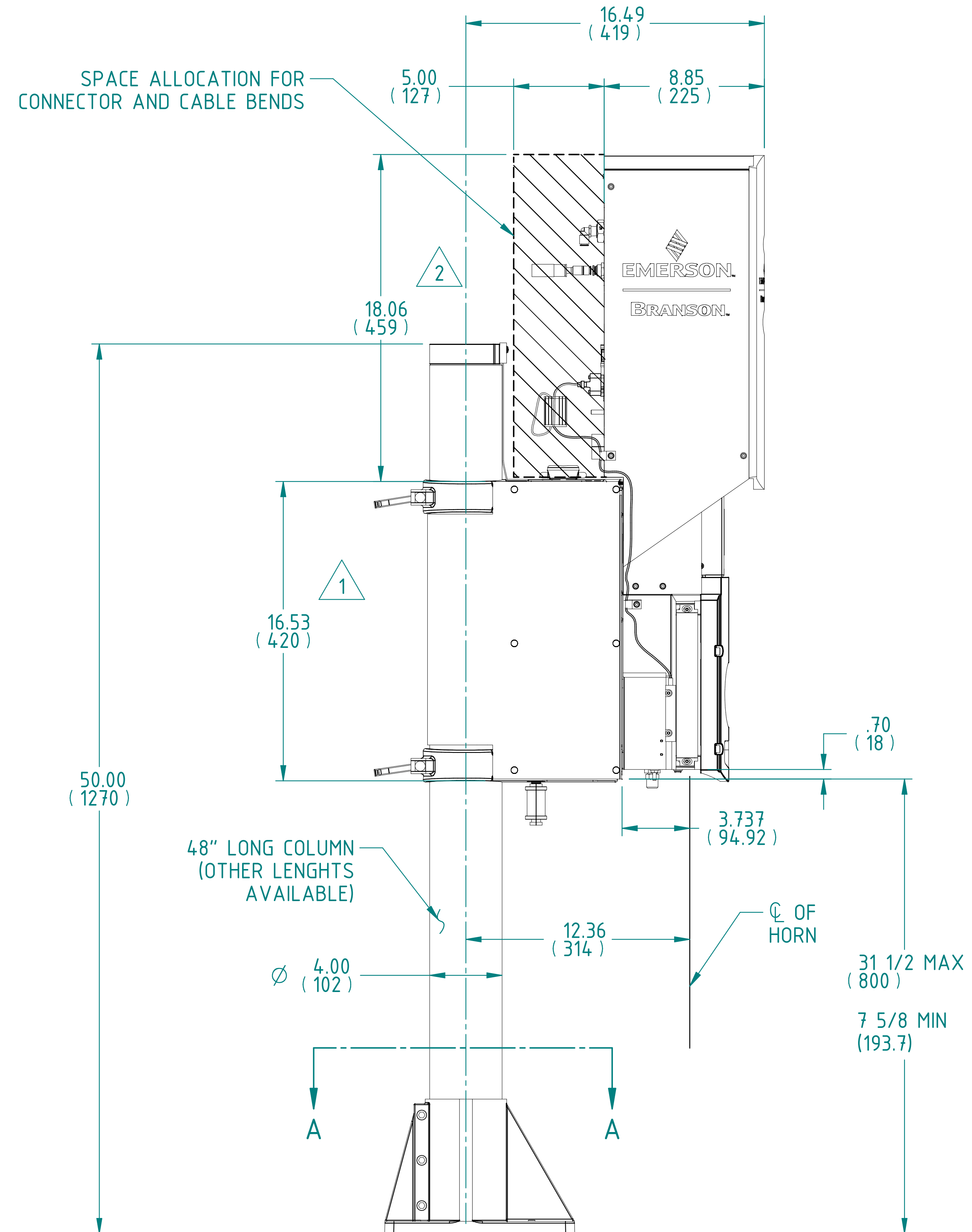
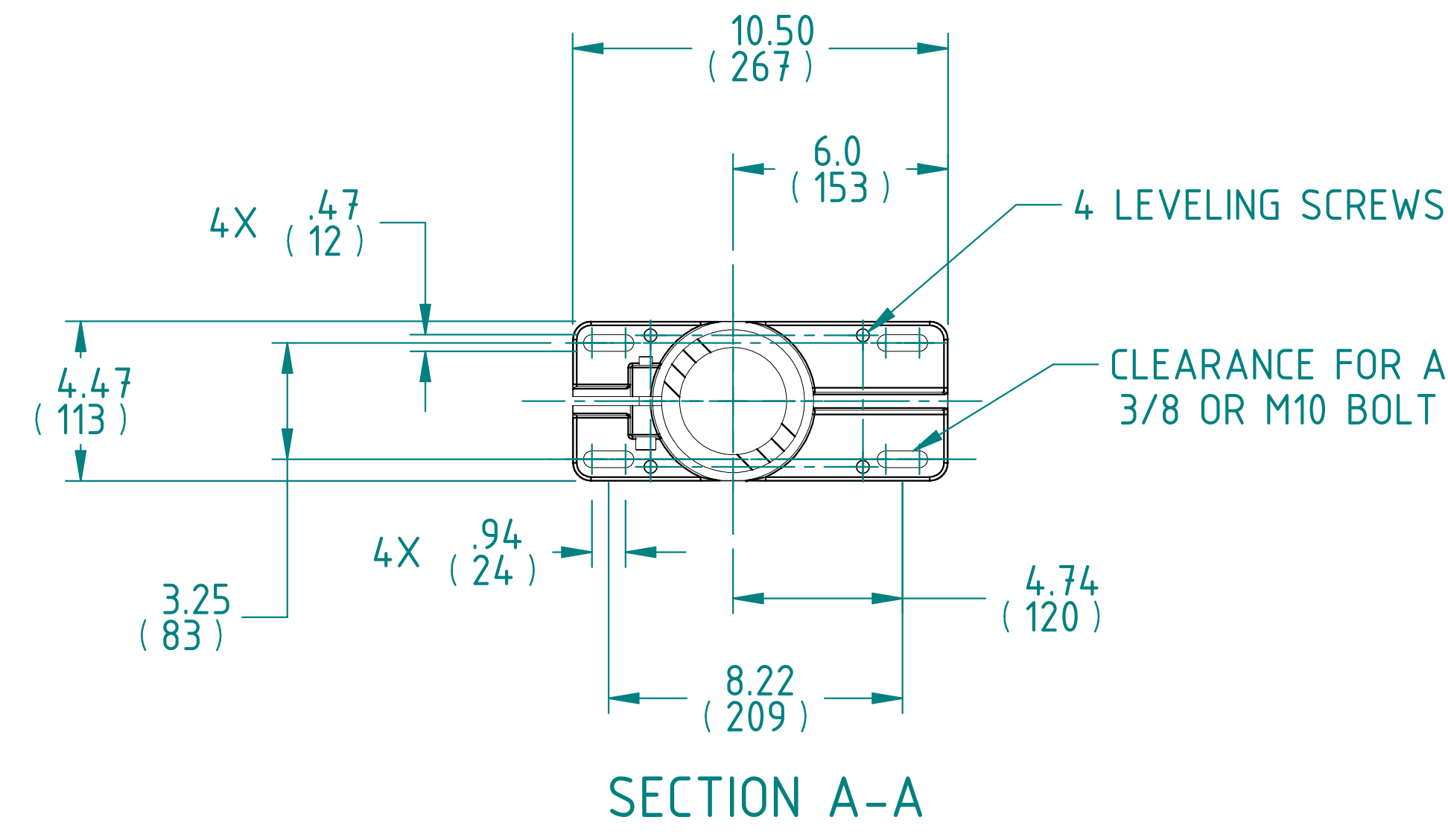


REVISIONS						
ZONE	REV	DESCRIPTION	DATE	ECN/ECO	DRAWN	APPR.
---	00	INITIAL RELEASE	07/29/14	RM-8795	JBM	NLG
---	01	COVERS WERE UPDATED	11/04/14	0-2642	JBM	ERS
ALL	02	WELDMENT WAS UPDATED, IMPACT ANALYSIS	09/01/17	22202	JTO	AASR
ALL	03	UPDATE PER IMPACT ANALYSIS, KNOCKOUT AND HOLE ADDED TO 100-115-112	10/16/17	22236	AAMG	JTO
ALL	04	LOGO WAS UPDATED PER IMPACT ANALYSIS OF 100-001-037	11/23/18	101383	AAMG	JTO
---	05	UPDATED PER IMPACT ANALYSIS	1/8/19	23495	OZG	DHM
---	06	UPDATED DRAWING TO SHOW CORRECT DIMENSIONS.	11/7/1	102203	OZG	JVL
---	07	UPDATED PER IMPACT ANALYSIS	7/27/22	104081	JEN	HTR

HORN DIMENSIONS	FREQUENCY			DIMENSION SHOWN ARE APPROXIMATE TO ALLOW FOR DIFFERENT BOOSTER GAIN HORN DESIGN, MATERIAL AND TUNING. ALL HORN DIMENSIONS ARE FOR 1/2 WAVE DESIGNS. ALLOW FOR ADJUSTABILITY AND POTENTIAL TOOLING CHANGE
	20 KHz	30 KHz	40 KHz	
	2.12 TO 2.75	1.30 TO 1.54	0.69 TO 0.94	
	5 TO 5.50	2.97 TO 3.80	2.5 TO 2.75	

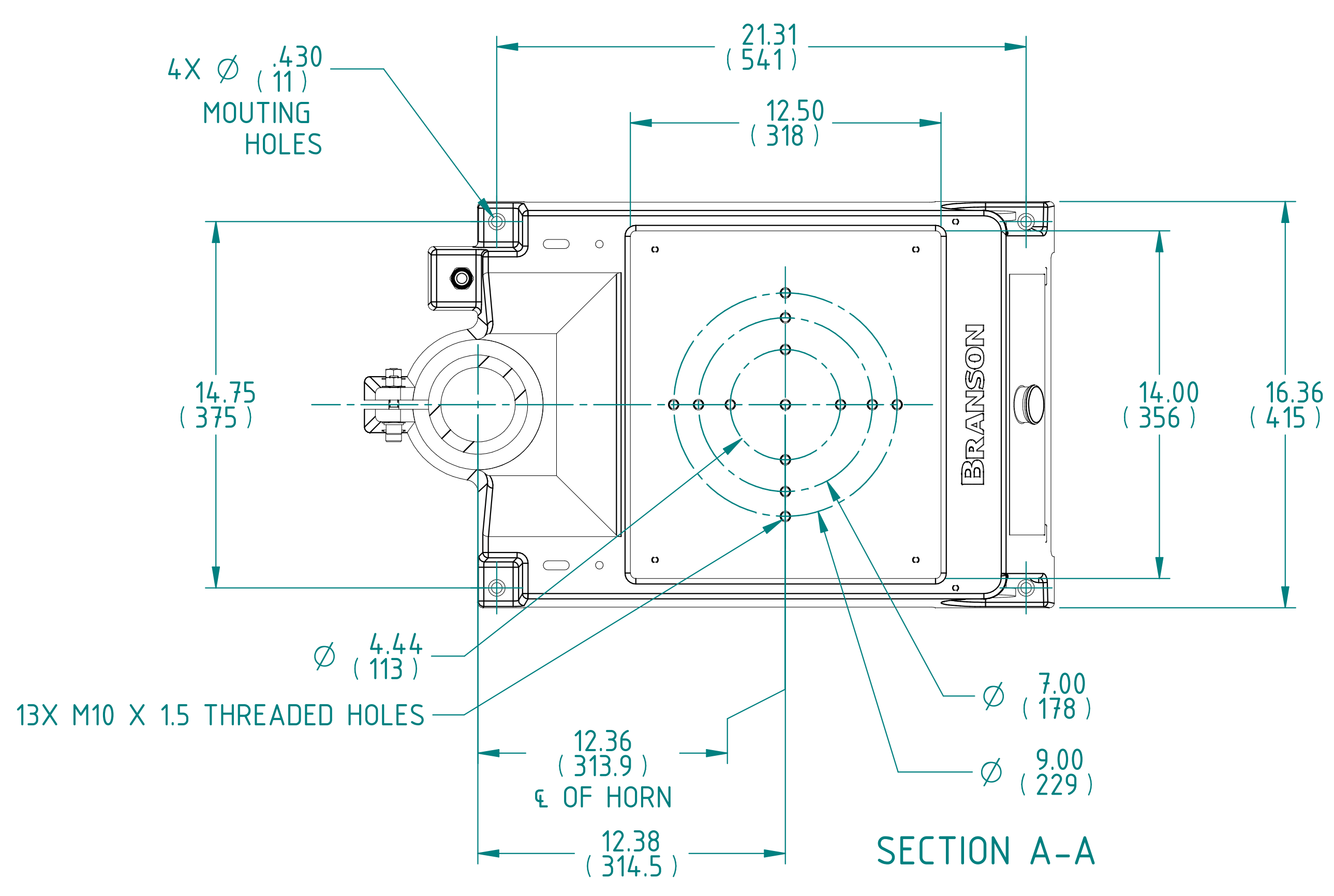
HORN WIDTH AND LENGTH WILL VARY WITH EACH DESIGN



- NOTES:
- ALL DIMENSIONS ARE APPROXIMATE.
  - SEE SHEET 2 FOR BASE MOUNT.  
SHEET 3 FOR ACTUATOR ONLY.

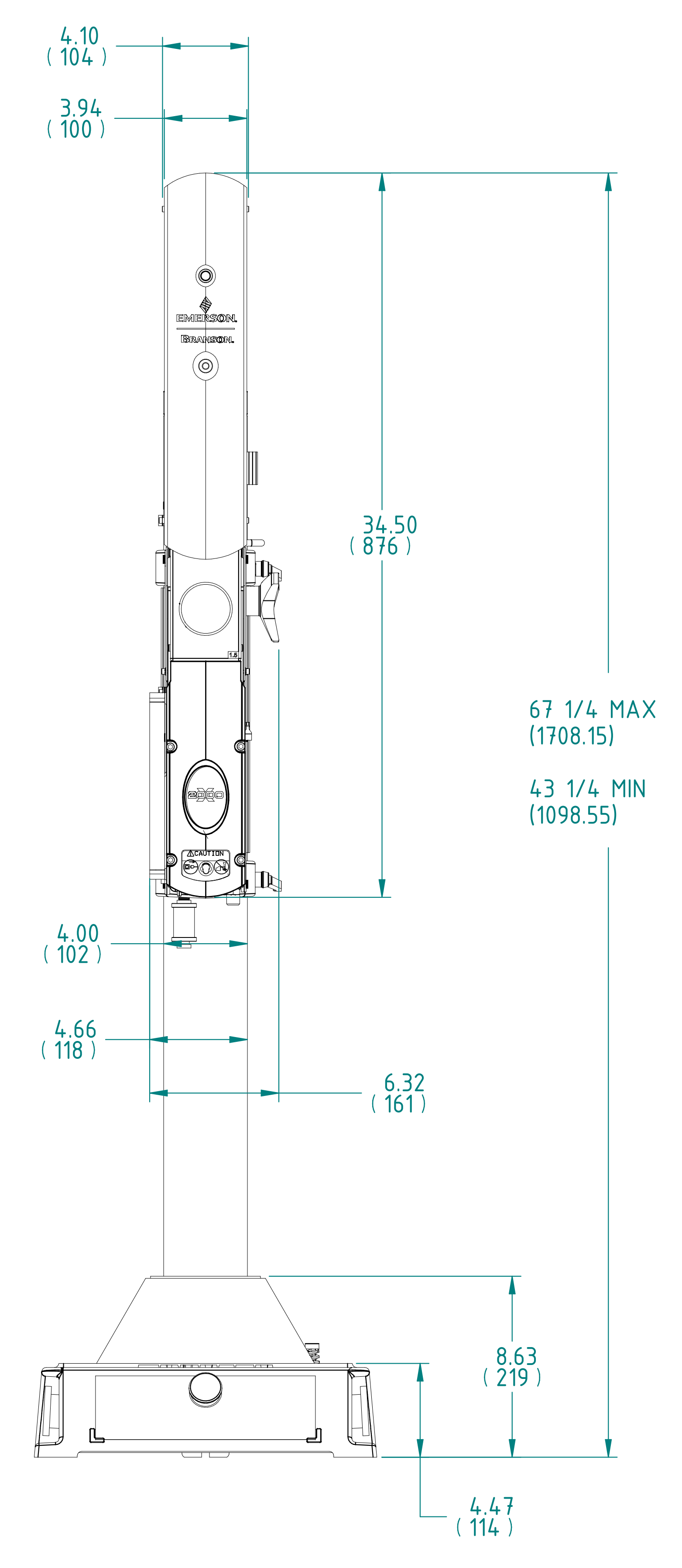
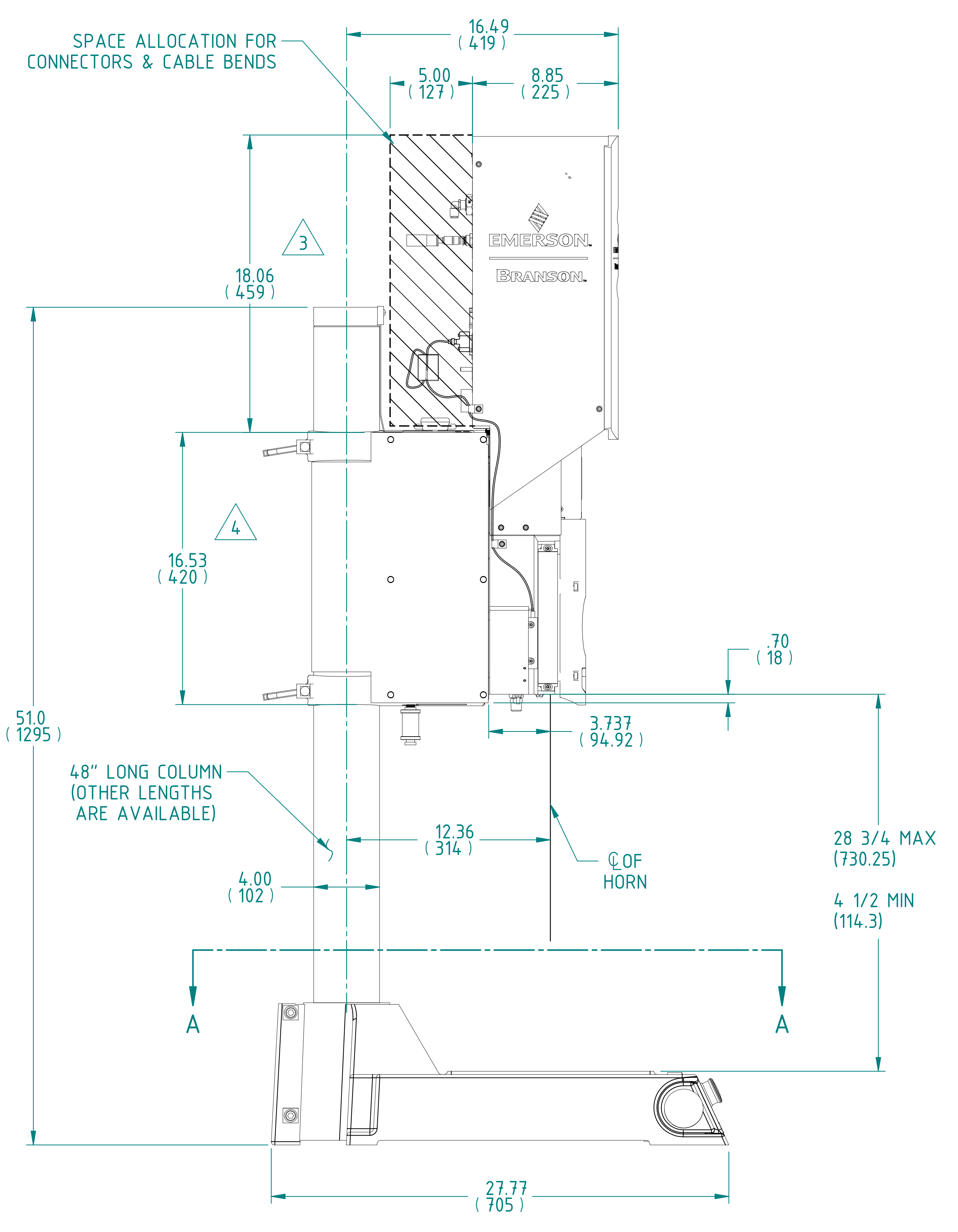
<small>UNLESS OTHERWISE SPECIFIED DIMENSIONS ARE IN INCHES AND DECIMALS ARE 3 PLACE DECIMALS .005 4 PLACE DECIMALS .0005 ANGLES AT FRACTIONS 1/16 SURFACE FINISH</small> <b>GD &amp; T Standard ASME Y 14.5</b> <small>SECONDARY DIMENSIONS ARE PROVIDED FOR REFERENCE ONLY</small> <b>3RD ANGLE PROJECTION</b>	<small>This PROPRIETARY Document is property of Branson Ultrasonics Corp., Brookfield, CT. It is confidential in nature, non-transferable, and issued with the clear understanding that it is not traced or copied without permission and is returnable upon demand.</small> <small>Article or material must comply with requirements stipulated by ReHS in its current version.</small>	<small>MATERIAL:</small> N/A  <small>FINISH:</small> N/A  <small>Finish Spec:</small> N/A	<b>EMERSON</b>		<b>BRANSON.</b>	
			<small>TITLE</small> OUTLINE 2000X sec	<small>AGENCY PART</small> NO	<small>DATE</small> 7/29/14	<small>DATE</small> 7/29/14
<small>SCALE: 14</small>			<small>SHEET 1 OF 3</small>	<small>SIZE</small> DWG NO <b>E</b>	<small>WEIGHT</small> 0.000 lbm	<small>REV</small> 07
<small>931-134-414</small>			<small>SOLID EDGE</small>			

REVISIONS					
ZONE	REV	DESCRIPTION	DATE	ECN/ECO	APPR.
		SEE SHEET #1			



HORN DIMENSIONS	FREQUENCY			DIMENSION SHOWN ARE APPROXIMATE TO ALLOW FOR DIFFERENT BOOSTER GAIN HORN DESIGN, MATERIAL AND TUNING. ALL HORN DIMENSIONS ARE FOR 1/2 WAVE DESIGNS. ALLOW FOR ADJUSTABILITY AND POTENTIAL TOOLING CHANGE
	20 KHz	30 KHz	40 KHz	
	2.12 TO 2.75	1.30 TO 1.54	0.69 TO 0.94	
	5 TO 5.50	2.97 TO 3.80	2.5 TO 2.75	

HORN WIDTH AND LENGTH WILL VARY WITH EACH DESIGN

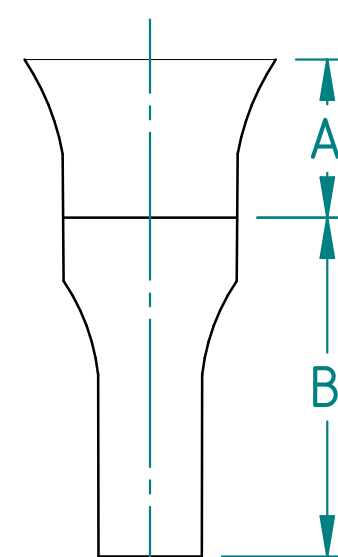


- NOTES:  
 1. ALL DIMENSIONS ARE APPROXIMATE.  
 2. SEE SHEET 1 FOR HUB MOUNT.  
 SHEET 3 FOR ACTUATOR ONLY.

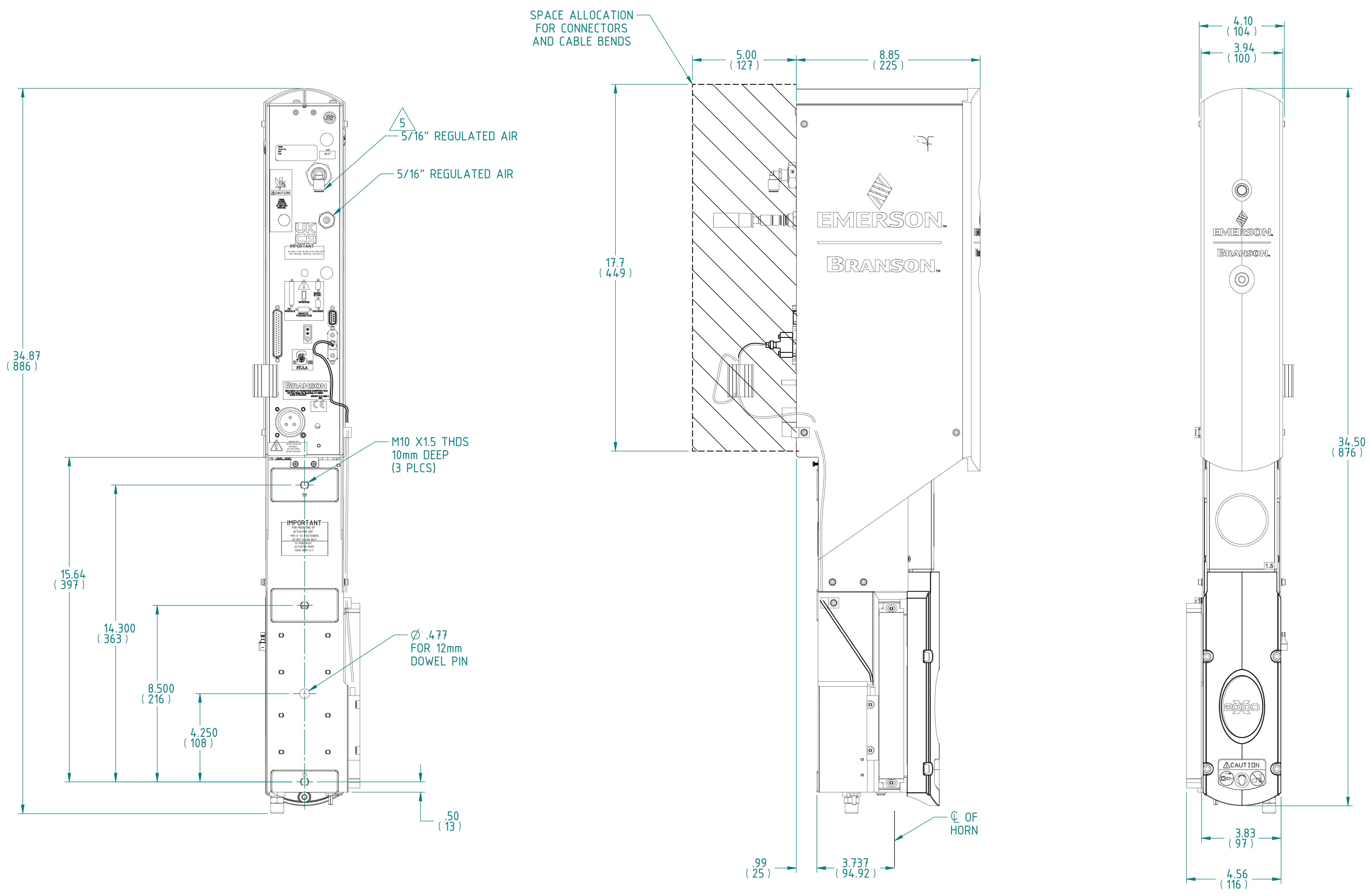
<small>UNLESS OTHERWISE SPECIFIED DIMENSIONS ARE IN INCHES AND DECIMALS ARE: 2 PLACE DECIMALS - .005 3 PLACE DECIMALS - .0005 4 PLACE DECIMALS - .00005 ANGLES - 1/4 FRACTIONS - 1/32 SURFACE FINISH: Ra .125</small> <b>GD &amp; T Standard ASME Y 14.5</b> <small>SECONDARY DIMENSIONS ARE PROVIDED FOR REFERENCE ONLY</small> <b>3RD ANGLE PROJECTION</b>	<small>This PROPRIETARY Document is property of Branson Ultrasonics Corp., Brookfield, CT. It is confidential in nature, non-transferable, and issued with the clear understanding that it is not traced or copied without permission and is returnable upon demand.</small> <small>Article or material must comply with requirements stipulated by ReHS in its current version.</small>	<b>MATERIAL:</b> N/A  <b>FINISH:</b> N/A  <b>Finish Spec:</b> N/A	<b>EMERSON</b>		<b>BRANSON</b>	
			DRAWN: JBM 7/29/14 CHECKED: ERS 7/29/14 APPROVED: NLG 7/29/14 SCALE: 14 SHEET 2 OF 3	DATE: 7/29/14 NAME: ERS TITLE: OUTLINE 2000x sec	AGENCY PART: NO DUC CLASSIFICATION: 3 Important IP CLASSIFICATION: NO WEIGHT: 0.000 lbm SIZE/DWG NO: E REV: 07	931-134-414



REVISIONS					
ZONE	REV	DESCRIPTION	DATE	ECN/ECO	APPR.
		SEE SHEET #1			

HORN DIMENSIONS	FREQUENCY			DIMENSION SHOWN ARE APPROXIMATE TO ALLOW FOR DIFFERENT BOOSTER GAIN HORN DESIGN, MATERIAL AND TUNING. ALL HORN DIMENSIONS ARE FOR 1/2 WAVE DESIGNS. ALLOW FOR ADJUSTABILITY AND POTENTIAL TOOLING CHANGE
	20 KHz	30 KHz	40 KHz	
	2.12 TO 2.75	1.30 TO 1.54	0.69 TO 0.94	
	5 TO 5.50	2.97 TO 3.80	2.5 TO 2.75	

HORN WIDTH AND LENGTH WILL VARY WITH EACH DESIGN



- NOTES:
- ALL DIMENSIONS ARE APPROXIMATE.
  - FOR HUB MOUNT SEE SHEET 1. AND BASE MOUNT SEE SHEET 2.

<small>UNLESS OTHERWISE SPECIFIED DIMENSIONS ARE IN INCHES AND DECIMALS ARE .005 2 PLACE DECIMALS .0005 3 PLACE DECIMALS .00005 4 PLACE DECIMALS .00005 ANGLES BY FRACTIONS 1/16 SURFACE FINISH</small> <small>GD &amp; T Standard ASME Y 14.5</small> <small>SECONDARY DIMENSIONS ARE PROVIDED FOR REFERENCE ONLY</small> <small>3RD ANGLE PROJECTION</small>	<small>This PROPRIETARY Document is property of Branson Ultrasonics Corp., Brookfield, CT. It is confidential in nature, non-transferable, and issued with the clear understanding that it is not traced or copied without permission and is returnable upon demand.</small> <small>Article or material must comply with requirements stipulated by RoHS in its current version.</small>	<small>MATERIAL:</small> N/A  <small>FINISH:</small> N/A  <small>Finish Spec:</small> N/A	<b>EMERSON</b>		<b>BRANSON.</b>	
			<small>TITLE</small> OUTLINE 2000X sec	<small>AGENCY PART</small> NO	<small>DATE</small> 7/29/14	<small>REV</small> 07