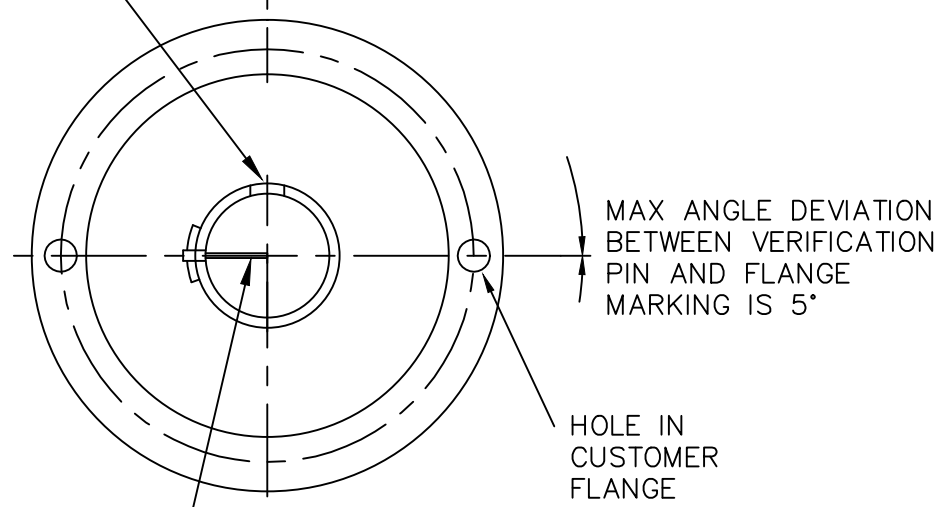
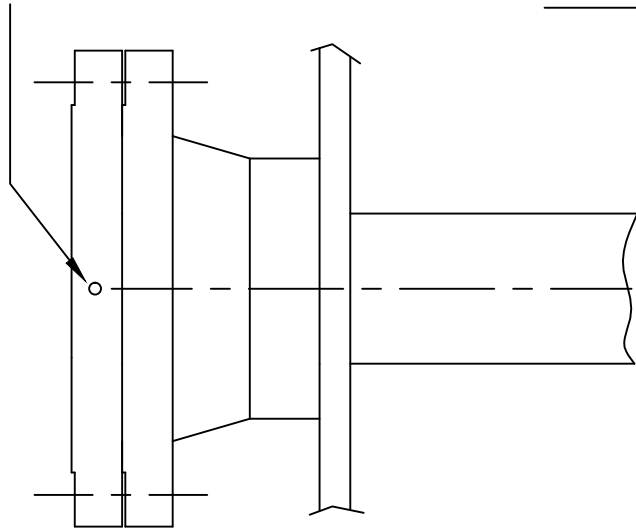


PIPE JOINT TOLERANCES	
END GAP	MAX 1 mm
EXCENTRICITY	MAX 1 mm
LINEAR DEVIATION	MAX 0.5:100

PIPE FLANGE AND VESSEL FLANGE IN ACC. WITH ANSI B16.5
 4" CLASS 150 OR 300
 6" CLASS 150 OR 300
 8" CLASS 150 OR 300

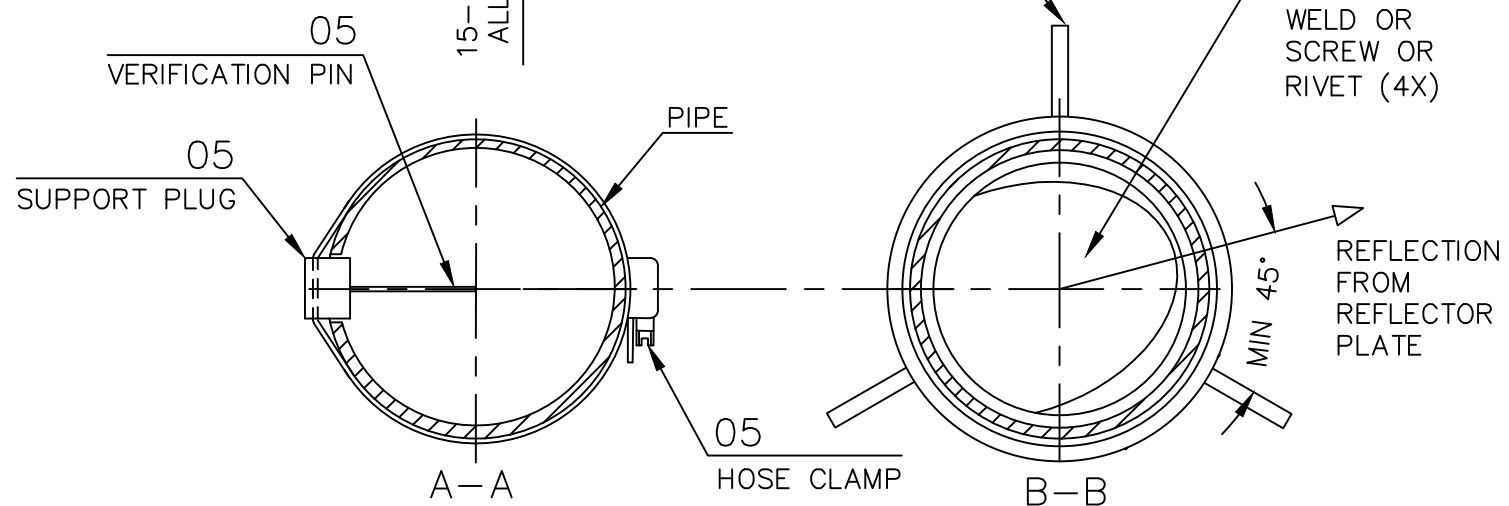
MARKING IN PIPE FLANGE CORRESPONDING TO VERIFICATION PIN.

THE EQUALIZATION HOLES MUST BE ORIENTATED 90° FROM THE VERIFICATION PIN



IMPORTANT:
 VERIFICATION PIN MUST BE DIRECTED TOWARDS ONE BOLT HOLE IN CUSTOMERS FLANGE. MARKING MUST BE DONE TO INDICATE THE POSITION OF THE VERIFICATION PIN AND THE CORRESPONDING FLANGE HOLE WITHIN 5°. THIS MARKING IS TO BE USED DURING MOUNTING OF THE RTG.

FOR DETAILED REQUIREMENTS ON STILL PIPE INSTALLATION, VERIFICATION PIN AND REFLECTOR KIT SEE DOCUMENT D9240041-915.



- FOR INSULATED CRYOGENIC TANKS: 1000 < L < 5000
- RECOMMENDATION: L = 1200
- FOR SIL INSTALLATION: MIN. 500 MM

POS	ITEM DESCRIPTION	QTY	REMARK	SUPPLIER
08	OUTER SLEEVE	1	STAINLESS STEEL	CUSTOMER
07	REFLECTOR KIT	1	STAINLESS STEEL	RTR
06	GASKET	1	SOFT OR FLEXIBLE METALLIC TYPE	CUSTOMER
05	VERIFICATION PIN KIT	1	STAINLESS STEEL	RTR
04	PIPE FLANGE	1	STAINLESS STEEL	CUSTOMER
03	FOOT	3	STAINLESS STEEL	CUSTOMER
02	SLIDING GUIDE FOR THE PIPE	1	STAINLESS STEEL	CUSTOMER
01	STILL PIPE	1	STAINLESS STEEL	CUSTOMER

ISSUED BY	WEEK	PRODUCT CODE	FILE	INSTALLATION DRAWING TITLE
EMe-BL	1033	5900	ACAD	MECHANICAL INSTALLATION DWG
APPROVED BY	WEEK	ORIGINAL DWG NO.	SCALE	5900 LPG/LNG STILL PIPE ATTACHED TO PIPE FLANGE
EMe-MH	1043	-	1:1	
LAYOUTVÄGEN 1 435 33 MÖLNLYCKE SWEDEN		1 ST ANGLE	DOC TYPE	DWG NO.
EMERSON			2	D9240041-910
			ISSUE	SHEET
			03	1/1

THE COPYRIGHT/OWNERSHIP OF THIS DOCUMENT IS AND WILL REMAIN OURS. THE DOCUMENT MUST NOT BE USED WITHOUT OUR AUTHORIZATION OR BROUGHT TO THE KNOWLEDGE OF A THIRD PARTY. CONTRAVENTION WILL BE PROSECUTED. ROSEMOUNT TANK RADAR AB, SWEDEN.