

Optimize Compliance, Minimize Risks The Future of Direct Spring PRV Monitoring



CROSBY™ Gain unparalleled insight into Pressure Relief Valve release events with Fisher™ FIELDVUE™ 4400 Digital Position Transmitter – Available Now!

Overcoming PRV Challenges

Pressure relief valves have historically been “off-grid” and not typically monitored. Lack of understanding of overpressure events can lead to serious consequences such as safety incidents, excess emissions, lost productivity, and unplanned outages. Some existing PRV monitoring devices only monitor for open and close position, which is not ideal for optimal regulation compliance

Beyond Regulatory Compliance

The proven, linkage-less technology provides accurate position indication, even in installations where mechanical vibration is present. With 0-100% travel, it not only meets the reporting requirements for regulatory compliance, but also provides the user with the highest level of reporting accuracy for pressure relief events. Ensure superior environmental compliance and increased safety, reliability, and productivity.

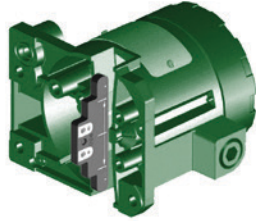
Installation is effortless with local pushbuttons for calibration and setup. Choose between factory-assembled transmitters for new Crosby J-Series valves or retrofit existing ones during repair for seamless integration.



Precision Monitoring for Optimal Performance!

Linkage-Less, Non-Contact Feedbacks

A magnetic array gets mounted on the valve spindle and a Hall Effect sensor detects its position along a calibrated range. With over 20 years of field proven experience, our linkage-less technology mitigates issues caused by vibration and mechanical wear.



Optimal Volumetric Release Reporting

0-100% lift percent monitoring allows for more accurate reporting of volumetric release during an overpressure event when compared to discrete devices.



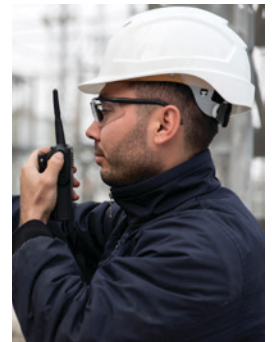
Easy Setup

Featuring local pushbuttons and an LED indicator, our devices offer easy and rapid setup and calibration. Valves can be delivered pre-calibrated from the factory or retrofitted on-site, streamlining installation and maintenance processes.



Advanced Diagnostics and Alerts

The Fisher™ FIELDVUE™ 4400 provides instant alerts for overpressure events, ensuring timely response. The HART diagnostics can help detect chatter and instability, safeguarding internal PRV components from potential damage.



Emerson

Americas

T +1 800 558 5853
T +1 972 548 3574

 webadmin.regulators@emerson.com

 [Emerson.com](https://www.emerson.com)

Europe

T +39 051 419 0611

 [Facebook.com/EmersonAutomationSolutions](https://www.facebook.com/EmersonAutomationSolutions)

Asia Pacific

T +65 6777 8211

 [LinkedIn.com/company/emerson-automation-solutions](https://www.linkedin.com/company/emerson-automation-solutions)

Middle East / Africa

T +971 4811 8100

 [Twitter.com/emr_automation](https://twitter.com/emr_automation)

D353332X012 © 2024 Emerson Process Management Regulator Technologies, Inc. All rights reserved. 6/24.
Crosby, Fisher, and FIELDVUE are marks owned by one of the companies in the Emerson business unit of Emerson Electric Co.
The Emerson logo is a trademark and service mark of Emerson Electric Co. All other marks are property of their respective owners.

The contents of this publication are presented for informational purposes only, and while every effort has been made to ensure their accuracy, they are not to be construed as warranties or guarantees, express or implied, regarding the products or services described herein or their use or applicability. All sales are governed by our terms and conditions, which are available upon request. We reserve the right to modify or improve the designs or specifications of such products at any time without notice. Neither Emerson, nor any of its affiliated entities assume responsibility for the selection, use, and maintenance of any product remains solely with the purchaser and end user.

