

YARWAY GRAPHLOCK AND 98 PACKING SET

INSTALLATION, OPERATION AND MAINTENANCE MANUAL

Before installation these instructions must be fully read and understood

INSTALLATION

CAUTION

Before repacking any valve, make sure all safety precautions are taken as applicable to the particular valve being serviced.

1. Completely remove old packing including any spacers, washers or lantern rings, if any. Make sure that surfaces contacting packing are clean. Inspect the stuffing box and stem for straightness, wear, scratches, pitting, etc., and other abnormalities which would prevent establishment of a good seal around the packing. Repair or replace as necessary.
2. If a spacer is supplied with this packing or if a spacer was removed from the stuffing box, make sure it is installed first. If one end of the spacer is chamfered, install chamfered end down so that it sits at bottom of stuffing box. Replace lantern ring, if applicable, in a similar fashion when a lantern ring has been either supplied with this packing or removed from the stuffing box. See Fig.1.

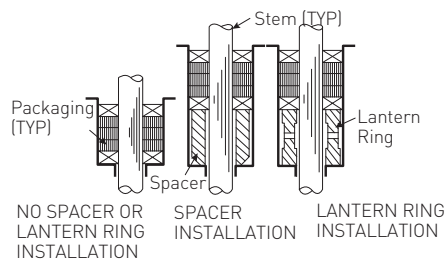


FIGURE 1

3. **IMPORTANT.** Packing is supplied as a complete set and rings should be installed in same order as packaged in the set. Rings are either one piece solid or in a split form. The solid rings may be or in a split form. The solid rings may be cut (one cut per ring) to facilitate installation. Rings should be cut using a razor blade or other similar thin sharp tool. Use a sawing action to cut a 45° slit as shown in Fig. 2. Do not apply any type of lubrication to the stem, stuffing box or packing.

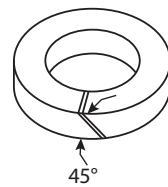


FIGURE 2

4. If the split form is used and it is not possible to slip the rings over the stem without opening the rings, install the rings over the stem by twisting open in an "S" fashion. Never open rings with hinge-like action. See Fig 3.

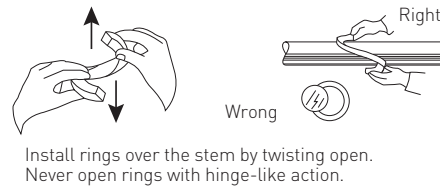


FIGURE 3

5. Check packing rings for proper fit. They should be push fit into the stuffing box.
6. Install one ring at a time, in the proper sequence, using a packing driver or gland bushing. Each ring must be sealed individually with a packing driver. See Fig. 4.

CAUTION

Do not use a screwdriver or other sharp object to seat the packing. This could damage the packing and/or stem. If a packing driver is used, make sure that the diametrical clearances between the I.D. of the driver and O.D. of the stem and, the O.D. of the driver and I.D. of the stuffing box do not exceed .020".

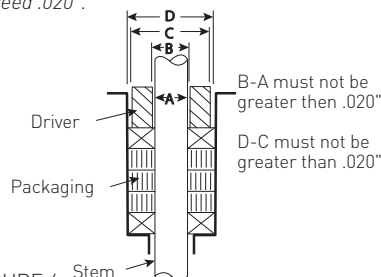


FIGURE 4

7. Stagger the joints (if present) on each successive ring 90° apart. If only two rings (with joints) are used, stagger 180° apart.
8. Filling of the stuffing box with the correct number of rings may require some compression of the rings already installed. Do not overcompress the packing. The amount of compression should be only that which is required to install the correct number of rings into the stuffing box, to make room for the rest of the packing, can be accomplished using the gland bushing and taking up on the gland nuts.
9. When all the packing has been installed in the stuffing box and the gland bushing and packing flange are in place, take up on the gland nuts evenly with a wrench to seat and form the complete packing set to the stuffing box and stem. Compress the packing only enough to cause the packing to slightly grip the stem. Now loosen the nuts, and let the packing expand. If possible, move the stem to insure no binding is present. Re-tighten gland nuts finger light plus ¼ turn.
10. Slight adjustment of the gland nuts may be necessary after a few hours of service.

WARNING

Hot discharge from this product may cause severe burns. Discharge must be piped away or directed so that persons in the vicinity are not endangered. This product must be isolated, vented and cool to the touch before repairing or inspecting.

YARWAY GRAPHLOCK AND 98 PACKING SET

INSTALLATION, OPERATION AND MAINTENANCE MANUAL

RIGHT TO KNOW LAWS AND OSHA STANDARD 29CFR (1910.1200)

Material Safety Data Sheets on the following Yarway products:
Valves, Steam Traps and Strainers.

The OSHA Hazard Communication Standard 29CFR 1910.1200, states that the standard does not apply to "articles." The standard defines an article as:
"A manufactured item formed to a specific shape or design for a particular use which does not release or otherwise expose an employee to a hazardous chemical under normal conditions of use." The above named products fall within the definition of an "article", no Material Safety Data Sheets are available or are required. Our product is manufactured as an "end product."

If the product is a weld end the following applies:

WARNING

Materials used in manufacture of Yarway products are considered in a stable condition when shipped. However, under certain conditions purchasers could create potential hazardous conditions by their future operations.

CAUTION

Welding, cutting, burning, machining or grinding of this product can generate toxic dust and fumes of potentially hazardous ingredients. The dust or fumes can cause irritation of the respiratory tract, nose, throat, skin and eyes. It may cause temporary or permanent respiratory disease in a small percentage of exposed individuals. Use moderate ventilation when grinding or welding. Avoid breathing dust, fumes or mist. Avoid prolonged skin contact with dust or mist. Maintain dust levels below OSHA and ACGIH levels. Use protective devices. Wash hands thoroughly after contact with dust before eating or smoking.

Neither Emerson, Emerson Automation Solutions, nor any of their affiliated entities assumes responsibility for the selection, use or maintenance of any product. Responsibility for proper selection, use, and maintenance of any product remains solely with the purchaser and end user.

Yarway is a mark owned by one of the companies in the Emerson Automation Solutions business unit of Emerson Electric Co. Emerson Automation Solutions, Emerson and the Emerson logo are trademarks and service marks of Emerson Electric Co. All other marks are the property of their respective owners.

The contents of this publication are presented for informational purposes only, and while every effort has been made to ensure their accuracy, they are not to be construed as warranties or guarantees, express or implied, regarding the products or services described herein or their use or applicability. All sales are governed by our terms and conditions, which are available upon request. We reserve the right to modify or improve the designs or specifications of such products at any time without notice.

Emerson.com/FinalControl