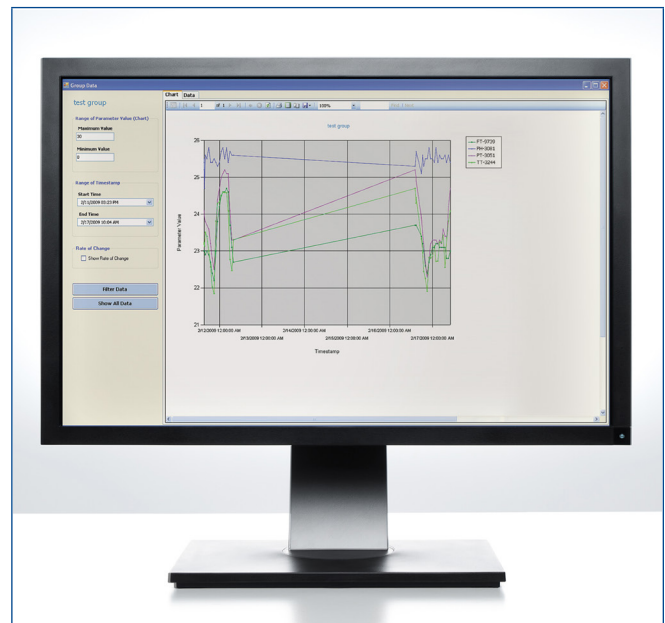


AlertTrack™ SNAP-ON™ Application

- Create custom device specific alerts on any parameter available in the device
- Prevent unscheduled maintenance downtime
- Enhance overall visibility of operating devices
- Achieve better operating performance
- Route any alert from AMS, created by device or AlertTrack™ to your cell or mobile device
- Receive reminders when calibration is due and notifications when calibrations are complete



The AlertTrack™ SNAP-ON™ application evaluates and reports asset health based on defined alert conditions, while documenting data at a defined user rate.

Overview

AMS Device Manager allows you to track the health of your intelligent devices, sending critical alerts to operations and maintenance to help prevent an interruption in your process.

Using the AlertTrack™ SNAP-ON™ application, you can configure alerts using additional instrument data that monitors process ambient conditions, process connections, and process inputs. AlertTrack then directs these alerts to the right people in the plant. Critical safety incidents, like a safety shower alert, can be sent to the health and safety officer, whereas a process upset alert will be sent to operations and maintenance.

With the AlertTrack SNAP-ON application, you gain visibility to the health of your field devices and documentation of parameter changes. You can also route alerts to your cell phone or mobile device for on-the-go notification of device health or process environment conditions.

The AlertTrack SNAP-ON allows you to:

- Group multiple devices and set parameters to be scanned and documented.
- Analyze trends to identify problem assets.
- Access AlertTrack messages through the AMS Device Manager Alert Monitor and Audit Trail or your mobile device.
- Take corrective action before assets fail or production is interrupted.

AMS Tag	Value	Timestamp	Parameter	Parameter Path	Alert Type
FT-348					
PT-101	0	11/9/2007 10:02:42 ...	device_status	/DeviceID/00...	Low Alert, ...
PT-209					
PT-2982					
PT-393					
PT-394					
PT-395					
PT-396					
PT-397_1	0	11/9/2007 10:02:44 ...	device_status	/DeviceID/00...	Low Alert, ...
PT-398					
PT-774	0	11/9/2007 10:02:46 ...	device_status	/DeviceID/00...	Low Alert, ...
PT-902	0	11/9/2007 10:02:48 ...	device_status	/DeviceID/00...	Low Alert, ...
PT-983	0	11/9/2007 10:02:51 ...	device_status	/DeviceID/00...	Low Alert, ...

The AlertTrack SNAP-ON application allows you to pinpoint trouble spots in your process directly from the control room or from your mobile device. Customize safety alerts to reduce exposure of plant personnel to hazardous conditions in the field.

Clear Picture of Valve Performance

You can assign an hourly, daily, or monthly scan cycle to a group of valves performing similar work. The AlertTrack SNAP-ON application stores valve cycle and travel accumulation data in an SQL database, removing the need for maintenance personnel to manually record and enter it. View data trends in Excel or other SQL-compatible tools to compare performance across valves and identify areas for process improvement.

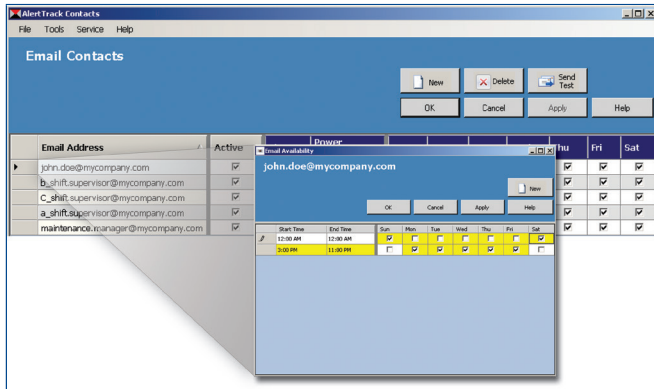
Identify Root Cause and Improve Equipment Life

Imagine a valve in your process begins to cycle more frequently, indicating a process, tuning, or valve assembly problem. The AlertTrack SNAP-ON application will report this excessive rate of change in valve cycles and will help maintenance to determine the root cause.

What happens when you have a heat trace that has tripped leading to a frozen impulse line on your pressure transmitter? The AlertTrack SNAP-ON application will notify you when internal device temperatures fall, allowing you to save the line before it is frozen. You can keep your device active and accurate, while ensuring that your process keeps running.

Imagine a valve packing leak causes the valve positioner to be exposed to extremely high temperatures. With the AlertTrack SNAP-ON application, this event is automatically documented, evaluated, and reported in the AMS Device Manager Alert Monitor and Audit Trail.

An alert is also sent to the technician on duty via cell phone or pager, allowing maintenance to identify and correct the problem before equipment is damaged.



Set alert parameters and route to the right people at the right time.

Routing Alerts

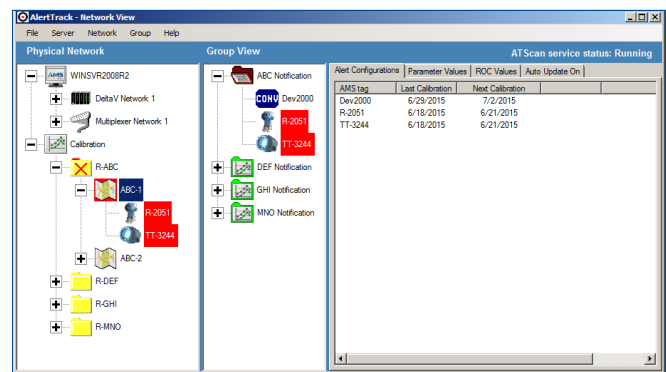
The Notification feature in the AlertTrack SNAP-ON application allows you to route alerts by severity level, plant area, and time. You determine who should receive which alerts and when. When a new alert is added to the AMS Device Manager Alert Monitor, AlertTrack Notification will determine if the alert conditions (tag name and alert severity level) match your parameters. If the alert matches, an alert message will be distributed to the appropriate contacts.

AlertTrack Notification allows PlantWeb users to align AMS Device Manager alerts with pre-defined severity levels in PlantWeb for a standard alerting method.

Prevent Unscheduled Maintenance Downtime

The AlertTrack SNAP-ON application allows you to leverage the advantages of your HART™ and FOUNDATION™ Fieldbus devices beyond their normal process functions by uncovering alerts that are sometimes hidden deep within smart devices, and sending customized alert messages. AlertTrack Notification allows you to send alerts to pre-determined plant personnel via a cell phone, pager, or mobile device for instant notification of device status and process conditions.

With instant access to your critical alerts, you can troubleshoot issues quickly and ensure your process continues with minimal interruption.



Visually Manage Calibration Schedules

AlertTrack Calibration User Interface and Reports make it easy to see what devices are due for calibration – system wide. Additionally, AlertTrack will send calibration reminders via text or email to inform you when calibrations are due and, if needed, will send notifications when calibrations have been completed. The new calibration feature applies to online HART and FOUNDATION Fieldbus devices, as well as offline conventional devices.

The screenshot shows the 'Advanced - Bit Alerts' configuration window. At the top, there are three tabs: 'Assign Parameter', 'Configure Alert Triggers', and 'Advanced - Bit Alerts'. Below the tabs, there are three main sections: 'Devices', 'Parameter Organization', and 'Parameters'. The 'Devices' section shows a tree view with 'AMS tag' and 'R-2051'. The 'Parameter Organization' section shows a tree view with '2051 Rev 3' and 'PV'. The 'Parameters' section lists 'ALARM_CODE', 'ANALOG_VALUE', 'DAMPING_VALUE', and 'DIGITAL_UNITS'. Below these sections is a 'Configure Alerts' section with a table for 'Alert Type', 'Group Alert Triggers', and 'Device exceptions'. The table has two rows: 'High Alert' and 'Low Alert'. The 'High Alert' row has a value of '70' in the 'Group Alert Triggers' column and '5' in the 'DBND' column. The 'Low Alert' row has a value of '30' in the 'Group Alert Triggers' column and '5' in the 'DBND' column. Below the 'Configure Alerts' section is a table for 'Bit # Alert Message' with columns for 'Bit #' and 'Alert Message'. The table has two columns of bits, from 0 to 19. Bit 1 is checked and has the message 'Your custom alert message here.'.

Generate custom alert evaluations based on numeric, string, or NAN readings.

Advanced Alert Configuration

AlertTrack allows customized alerts based on any parameter available in the device. Parameters are scanned by AlertTrack and displayed in an easy-to-use tree view. The value of any parameter can be monitored and evaluated according to

triggers that you can configure. Alerts can also be triggered by values such as “not a number” (NAN) or by setting individual bits in the parameter value.

Ordering Information

Description	Model Number
AlertTrack SNAP-ON Application	AW7076ALxxxxx; where xxxxx refers to the number of tags

©2024, Emerson. All rights reserved.

The Emerson logo is a trademark and service mark of Emerson Electric Co. The AMS logo is a mark of one of the Emerson family of companies. All other marks are the property of their respective owners.

The contents of this publication are presented for informational purposes only, and while diligent efforts were made to ensure their accuracy, they are not to be construed as warranties or guarantees, express or implied, regarding the products or services described herein or their use or applicability. All sales are governed by our terms and conditions, which are available on request. We reserve the right to modify or improve the designs or specifications of our products at any time without notice.

Contact Us
www.emerson.com/contactus