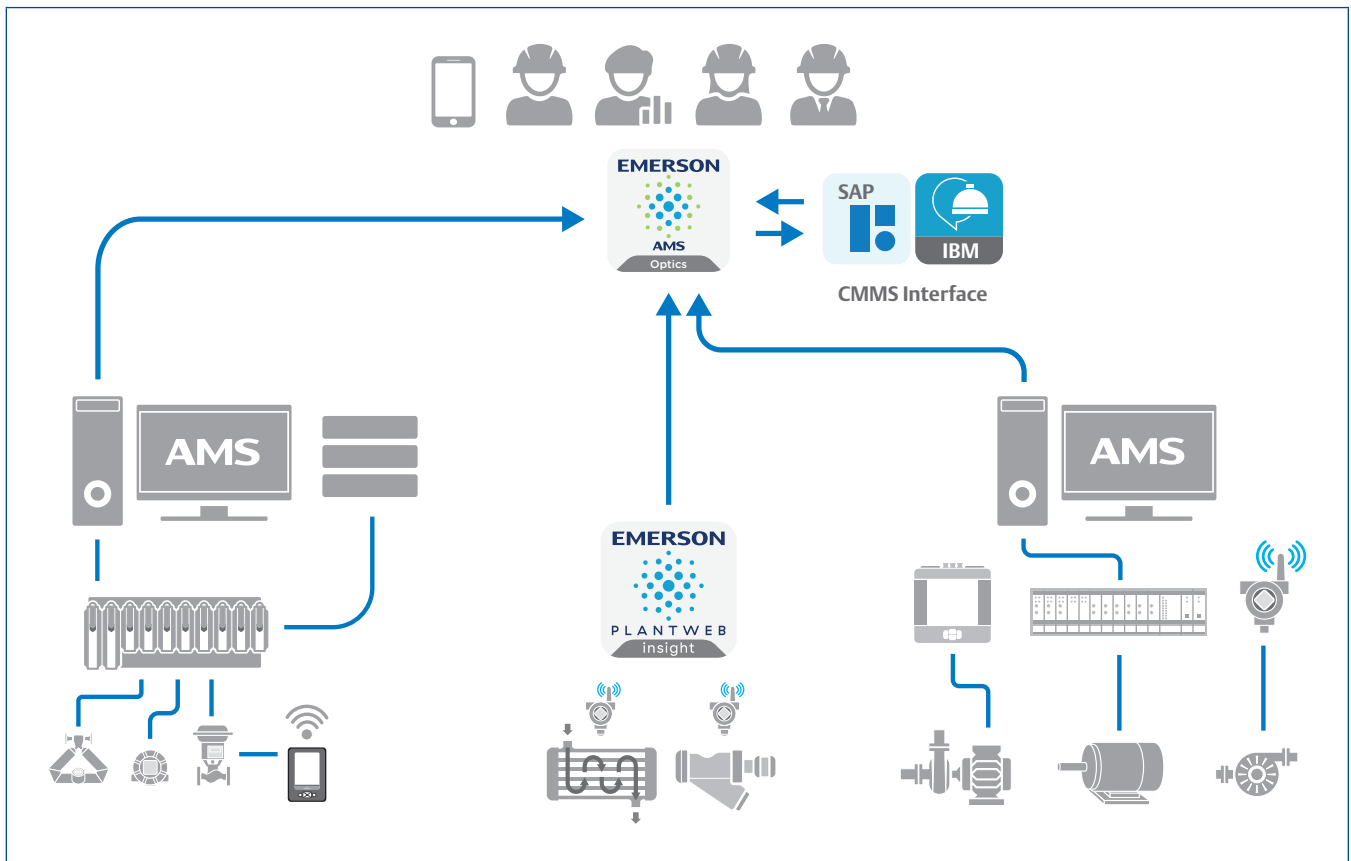


AMS Optics CMMS Interface



AMS Optics CMMS Interface Benefits

- Create CMMS requests from anywhere.
- Connect assets directly to SAP or IBM Maximo.
- Drive proactive operations through an integrated workflow.
- Automatically generate work requests for your most critical assets.

Solution Overview

Become more proactive in your facility by reducing the hours experts spend creating CMMS requests every week. By saving time spent generating work requests, experts can spend their valuable time focused on more productive activities. The most valuable opportunities to reduce the time spent creating CMMS requests include:

Proper Identification of Root Cause – When the root cause is mis-identified, unnecessary work requests are created. By using AMS Optics to centralize asset data, the root cause of a problem can be more easily identified. This allows users to create the right work orders to drive corrective action and eliminate wasteful work.

Connecting Data Sources Directly – By connecting underlying applications directly to your CMMS, alerts can be turned directly into work requests. This eliminates the manual process of converting insights from analytics or monitoring applications asset by asset into your CMMS.

Providing Mobility – Some asset health statuses may not trigger an alert, such as observing a leak in the facility. If a leak is observed out in the facility, employees need to be able to create a work request on the spot. Providing the ability to create work requests directly from a tablet or mobile device reduces the steps required to start corrective actions.

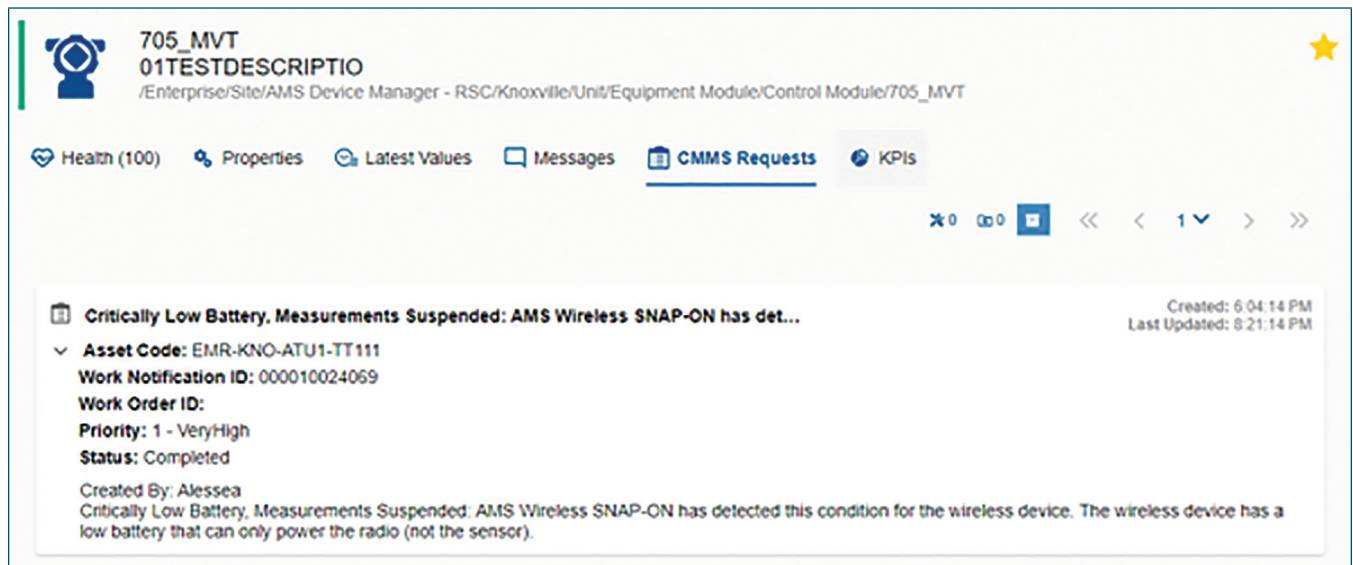
Prevent Duplicate CMMS Entries – Multiple plant personnel, usually working in different shifts, can create multiple work requests for the same issue. This occurs because of limited collaboration across the plant. With AMS Optics, plant personnel can easily collaborate and reduce wasteful effort of creating multiple work notifications. In addition, the CMMS interface has logic to prevent duplicate work notifications from being created. Duplicate entries get created when there is limited visibility to quickly see the existing work orders.

AMS Optics CMMS Interface

The AMS Optics CMMS interface allows users to connect AMS Optics directly to SAP or IBM Maximo.

Assets are mapped between CMMS and AMS Optics, so users can create CMMS requests directly from analytics or monitoring alerts. This proactively drives corrective actions before process upsets occur in the facility.

AMS Optics centralizes data to provide a holistic view of the work orders being created to drive action. With the mobile solution, users can create CMMS work requests from anywhere and see the status of existing requests. The ability to see open and completed requests reduces the chance of a duplicate entry and helps identify bad actors throughout facility.

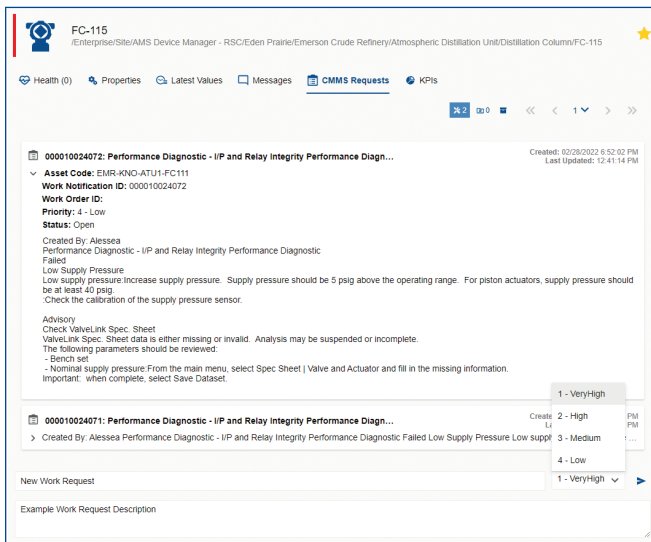


Create Work Requests Proactively

Each request created in AMS Optics is mapped to the equivalent CMMS asset. Once the request is generated by AMS Optics, SAP or IBM Maximo provides the work notification and/or work order number so users can easily reference the status of a work request.

Work requests can be created two ways in AMS Optics:

- User Generated Requests** – These requests are created manually by a AMS Optics user from either Optics or the mobile application. When creating a new work request, AMS Optics will automatically populate relevant asset information, such as the asset name and active alert details, reducing manual input. The user can either manually title the subject, or use the auto-populated title if the notification is generated from an alert. Finally, the user selects the priority and can add to the autopopulated description.



New work requests can be created from alerts or observations.

- Automatically Generated Requests** – Users can set rules to automatically create requests into their CMMS based on asset health and criticality. This decreases time to act on unhealthy assets and eliminates all manual work for creating requests. Users set criticality for their assets and choose the asset health score that will trigger an automatic notification.

CMMS Settings	
Maintenance Plant	Emerson Fisher Facility 1
Notification Type	M1
<input checked="" type="checkbox"/> Enable Automatic Notifications	
Asset Health Less Than or Equal	50
Asset Criticality Greater Than or Equal	75
Update Rate (Minutes)	5
<input type="button" value="Save"/> <input type="button" value="Cancel"/>	

AMS Optics automatic CMMS request criteria.

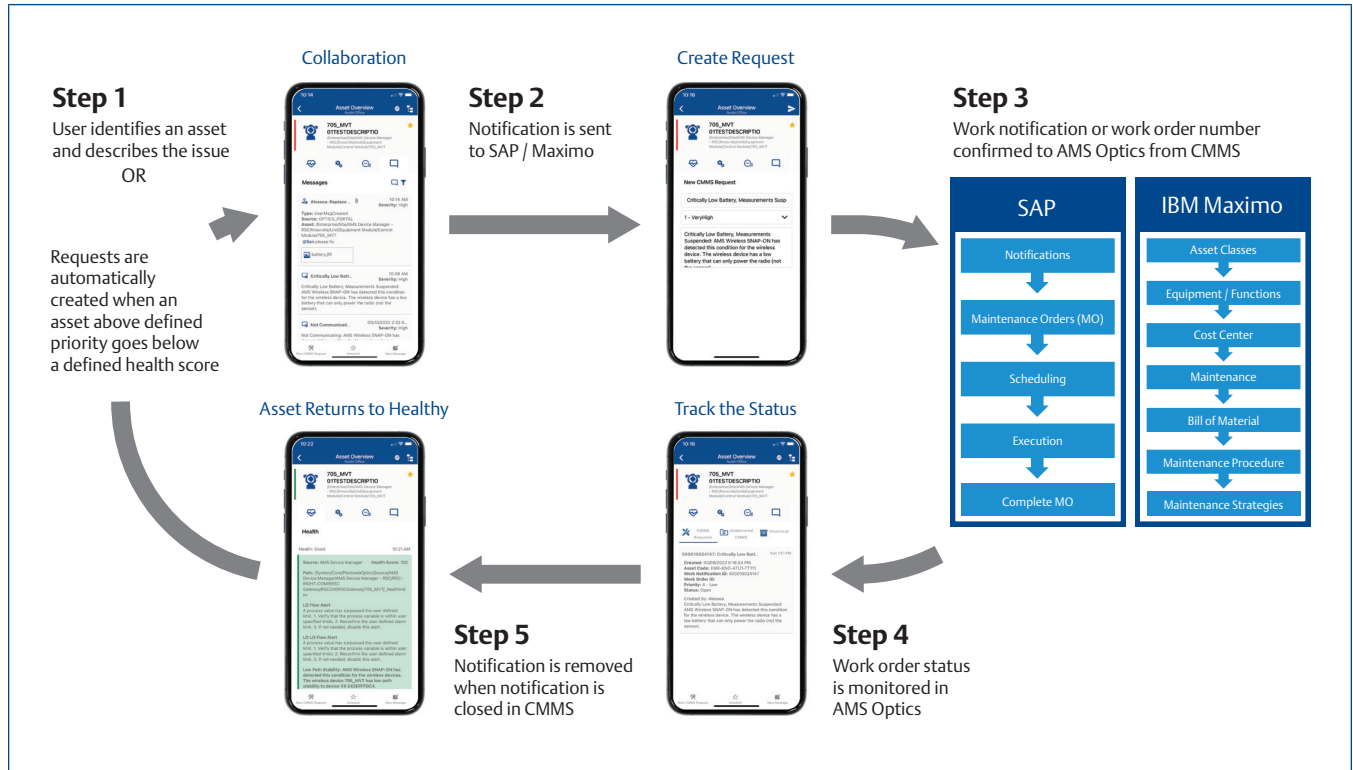
Once the work is completed, a completed status will be received by AMS Optics. The work history is grouped and stored by asset, so you can quickly and easily reference all prior work completed, historical data and all prior messages related to that asset.

The workflow process below shows the complete process from:

- Identifying an unhealthy asset
- Creating a work request
- Managing the work in CMMS
- Monitoring the status in AMS Optics
- Closing the request in CMMS and seeing the asset return to a healthy state

This workflow process closes the loop by easily identifying your unhealthy assets and quickly driving corrective actions.

Workflow with CMMS Interface

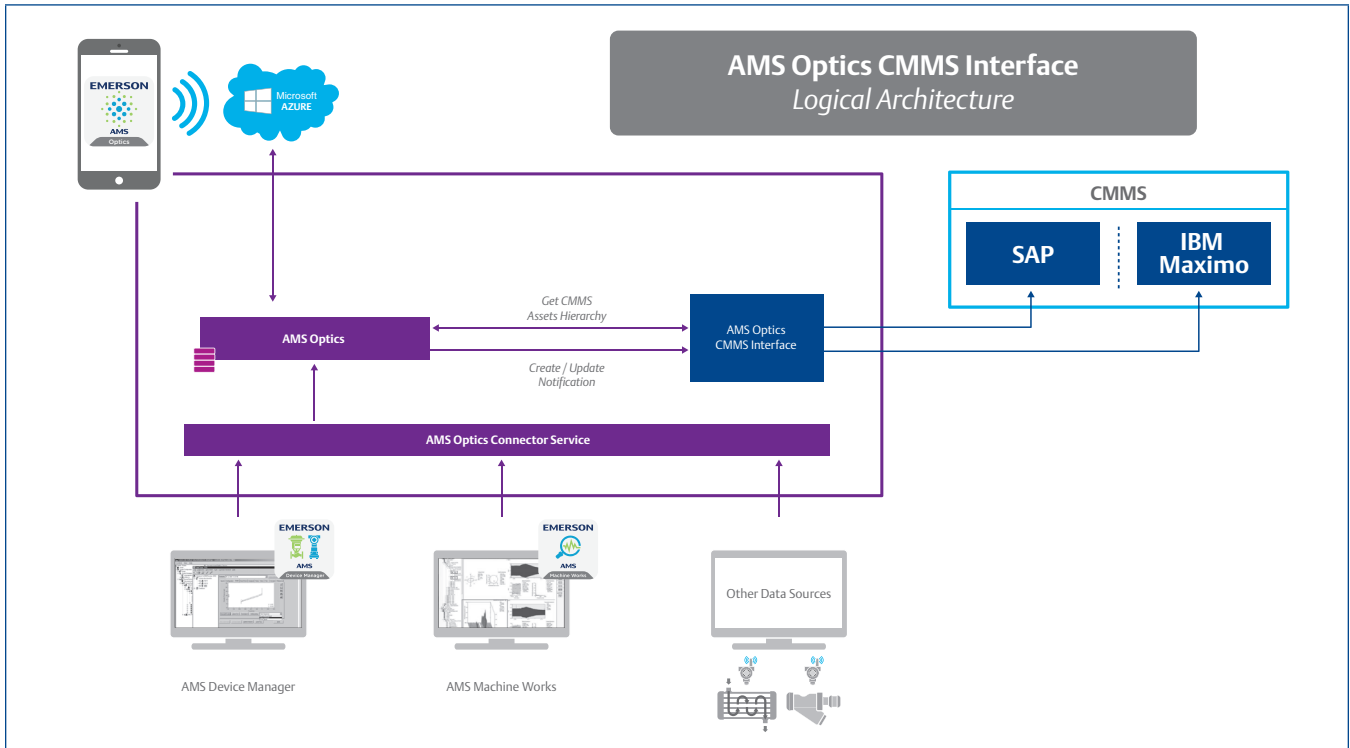


The workflow process with the AMS Optics CMMS interface.

Solution Details

Any asset connected to AMS Optics can be mapped to SAP or IBM Maximo. This includes data from AMS Device Manager, AMS Machinery Manager, AMS Machine Works, AMS Optics Analytics, DeltaV Control Loop, Plantweb Insight, and numerous open standard data sources.

The AMS Optics CMMS interface can be installed either on the AMS Optics server or a separate server. Assets mapped between AMS Optics and CMMS will be available to create work requests from both Optics and the mobile application. Please reference the drawing below for a high level architecture.



AMS Optics	SAP	IBM Maximo Asset Management
Supported Versions	ECC6.0 SAP R/3 4.7 ECC 5.0 S/4 HANA	Maximo 7.1 or higher

©2023, Emerson. All rights reserved.

The Emerson logo is a trademark and service mark of Emerson Electric Co. The AMS logo is a mark of one of the Emerson family of companies. All other marks are the property of their respective owners.

The contents of this publication are presented for informational purposes only, and while diligent efforts were made to ensure their accuracy, they are not to be construed as warranties or guarantees, express or implied, regarding the products or services described herein or their use or applicability. All sales are governed by our terms and conditions, which are available on request. We reserve the right to modify or improve the designs or specifications of our products at any time without notice.

Contact Us
www.emerson.com/contactus