

# DeltaV™ Alarm Help

- Operators have immediate access to approved alarm response procedures
- Alarm Help is easily customized to match the site's alarm management philosophy
- Senior operators can be permitted to author or edit alarm response procedures using Alarm Help for knowledge capture initiatives
- Alarm response procedures are maintained by Alarm Help on each operator workstation for fast retrieval and certain availability



*Protect your operation with immediate operator access to approved alarm response procedures.*

## Introduction

The DeltaV™ system provide a solid foundation for implementing and sustaining an effective alarm management program that conforms to ISA-18.2 – Management of Alarm Systems for the Process Industries and EEMUA-191 Alarm Systems – A Guide to Design, Management and Procurement. One important aspect of alarm management is ensuring Operators have ready access to approved alarm response procedures. DeltaV Alarm Help provides a simple and highly dependable solution, proving in-context access to this and other alarm rationalization information specified by ISA-18.2, resident in the native DeltaV system.

## Benefits

Alarm Help is a licensed feature for DeltaV Operator workstations, providing the following benefits:

From any active or suppressed alarm list, the Operator can access Alarm Help with a single mouse-click to view pre-supplied alarm response instructions to understand the alarm and respond effectively.

Smart icons indicate if alarm help content is available on a per-alarm basis, to ensure operators neither waste time nor hesitate to look based on past unsuccessful attempts.

The Operator can easily recall recently viewed Alarm Help, which is highly useful when managing multiple related alarm conditions.

Alarm Help can be opened from a detail display regardless of state, ideal for training or commissioning new alarms.

Operators with expert knowledge can be empowered to add or modify Alarm Help directly in the DeltaV Live and DeltaV Operate environments, which support an operations led approach to alarm rationalization.

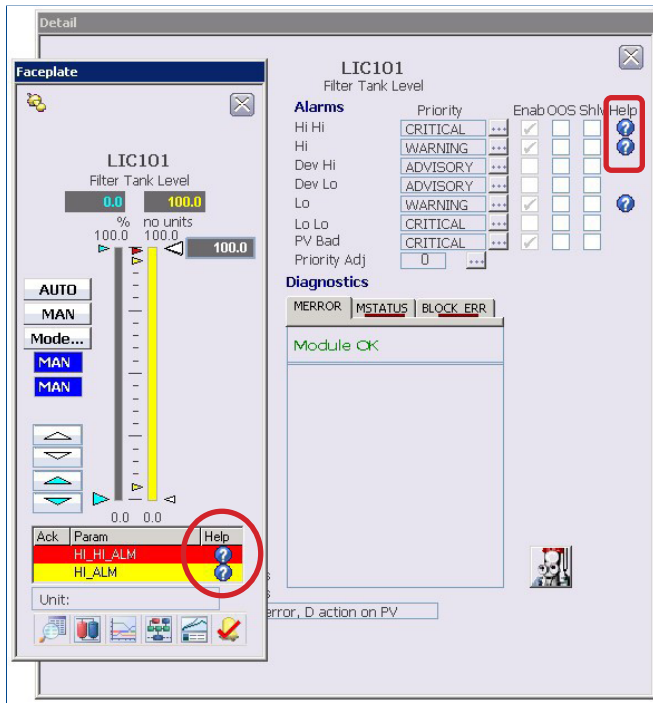
Alarm Help is downloaded to workstations separate from control module configuration, promoting more frequent updates to alarm help in running production systems.

Alarm Help can be easily customized to match the local site's alarm management philosophy. The three alarm help text fields can be re-named. Selection lists for alarm classification, time to respond and consequence of inaction can be customized.

Alarm Help is resident in every operator workstation for fast call-up and certain availability.

## More Information

To see a brief video of Alarm Help in action visit the website DeltaV.com and click on the Alarms link. Also on this page is a whitepaper describing methods to apply Alarm Help and other information on alarm management.



Alarm List			
Module/Param	Description	Alarm	Help
LIC101/Hi_Hi_ALM	Control Module	HIHI	?
LIC-10-501/Hi_Hi_ALM	Drum Level	HIHI	
LIC101/Hi_ALM	Control Module	HIGH	
LIC-10-501/Hi_ALM	Drum Level	HIGH	

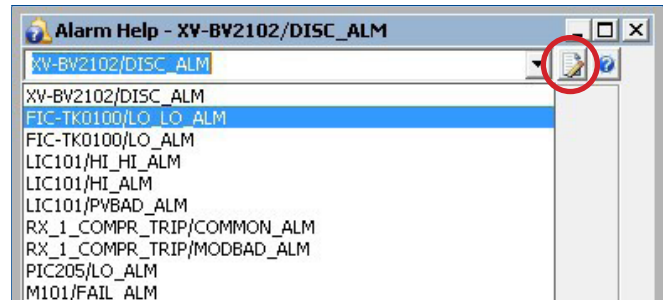
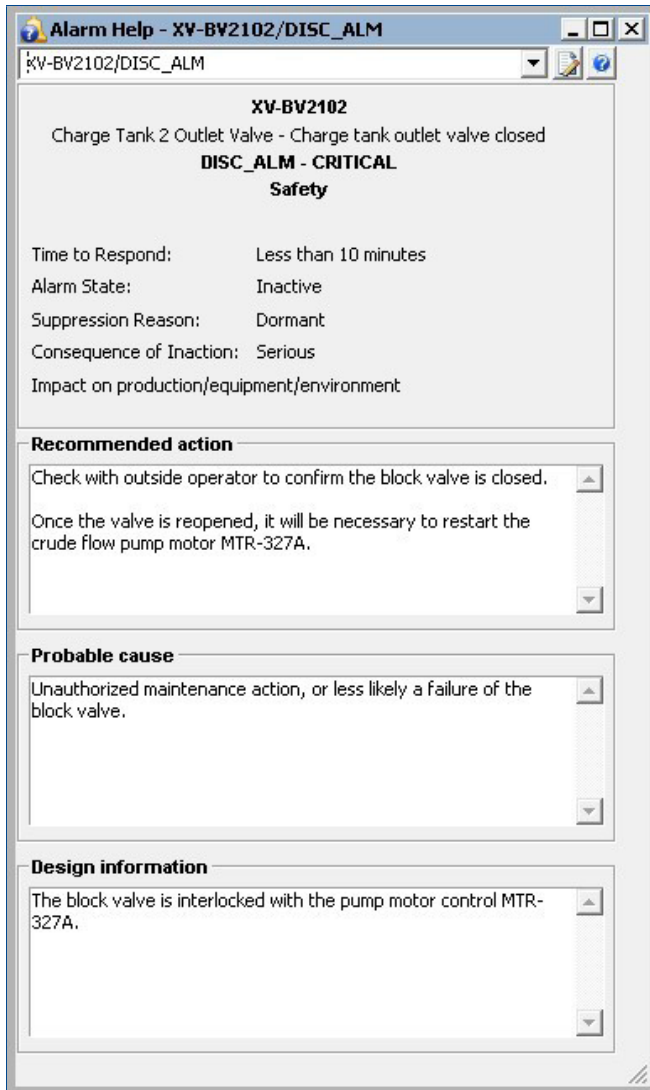
The Operator can see which alarms have an approved response procedure by the presence or absence of the Alarm Help call-up icon (circled), avoiding wasted effort and frustration searching an out-of-context source.

## Product Description

- Available for the DeltaV v11, v12, v13, and v14 and greater releases.
- Alarm configuration fields allow selection of a functional classification, consequence of inaction and time to respond, where the choices are determined by user configurable system wide settings.
- Alarm configuration fields are provided for three 500 character text fields. The field names that appear to the operator in the alarm help window are determined by user configurable system wide settings. Unicode characters are supported for non-English use.
- Alarm Help icons represent availability of content.
- Alarm Help is fully supported within the DeltaV system, accessible via alarm lists, Alarm Mosaic, DeltaV Explorer, System Alarm Management (SAM), Control Studio, and the bulk edit system.
- DeltaV user security permits authorized users to add or edit alarm help content in the system configuration database, from the operator environment. These permissions apply to each alarm help field.
- In v12, Alarm help was enhanced to present alarm descriptions.
- In v13, Alarm Help was enhanced to present additional information about suppressed alarms; indicating if it was shelved or removed from service for maintenance or by logic, the reason for suppression and the current active/inactive state of the suppressed alarm.
- In v13, detail displays provided with the system include the alarm help links. In prior releases these links can be added with modest configuration.



In DeltaV v13, Alarm Help presents alarm descriptions (outlined) and if shelved or out of service, the reason for suppression and current active/inactive state of the alarm.



Operators can quickly switch to one of the last ten viewed alarm help entries. Senior operators can add or edit alarm help (circled button) while in the operator environment.

*Alarm Help is a knowledge-sharing system, that equips operators to respond quickly and correctly, every time.*

## Ordering Information

Description	Model Number
DeltaV Alarm Help Subscription License for xx Operator Station(s)	VE2149SwSxx_YyFYzz

The model numbers above are for initial subscription term lengths only; renewal model numbers are available with a “-R” at the end of the model number string.

\*w represents the length of the subscription term in years (1, 3, or 5).

\*xx represents the license capacity (license for use on 01, 05, 10, or 25 Operator Stations).

\*y represents the specific year of the subscription term (1, 2, 3, 4, or 5).

\*zz represents a two-digit indicator of the year of purchase (e.a. 23).

## Application Notes

- Alarm Help is available for DeltaV v11 and newer DeltaV software versions.
- Alarm Help subscription licensing is available only for use with DeltaV v15.LTS and newer DeltaV software versions.
- For ordering information on non-subscription licensing for DeltaV v11 through DeltaV v14, please contact your local Emerson or Emerson Impact Partner office.
- Alarm Help is enabled on the ProfessionalPlus Workstation with no license.
- Alarm Help may be assigned to a Professional, Operator, Maintenance or Base Workstation.
- Alarm Help is not available for Application Stations.
- Alarm Help is not available for DeltaV Operate for Provox.
- Alarm Help supports alarms originating from zones that are not in the same zone as the Operator Workstation, beginning with the DeltaV v13.3.1 release.
- Images depicted in this datasheet are for Alarm Help in a DeltaV v13 system.

## Related Products

- **DeltaV Alarm Operations.** The basic DeltaV system provides a rich set of standard alarm operations capabilities to make operating, maintaining and auditing alarms easy and efficient.
- **DeltaV Alarm Mosaic.** Presents hundreds of alarms in an easy to comprehend view to help operators better manage alarm floods and simplify alarm history review during shift transitions.
- **DeltaV Live.** Emerson’s modern, built-for-purpose operator interface that was introduced with DeltaV v14. DeltaV Live delivers a high performance HTML5-based operations experience and simplified graphics configuration, all in an intuitive and customizable format with out-of-the-box simplicity.
- **DeltaV Operate.** High performance operator graphics, trends and alarms offered in standard operating layouts and utilizing system-wide built-in security.
- **DeltaV Analyze.** Configuration-free analysis of DeltaV system alarms and event with web page viewing and an alarm statistics report based on EEMUA-191, IEC 62682 and ISA-18.2 performance indicators.

©2024, Emerson. All rights reserved.

The Emerson logo is a trademark and service mark of Emerson Electric Co. The DeltaV logo is a mark of one of the Emerson family of companies. All other marks are the property of their respective owners.

The contents of this publication are presented for informational purposes only, and while diligent efforts were made to ensure their accuracy, they are not to be construed as warranties or guarantees, express or implied, regarding the products or services described herein or their use or applicability. All sales are governed by our terms and conditions, which are available on request. We reserve the right to modify or improve the designs or specifications of our products at any time without notice.

### Contact Us

[www.emerson.com/contactus](http://www.emerson.com/contactus)