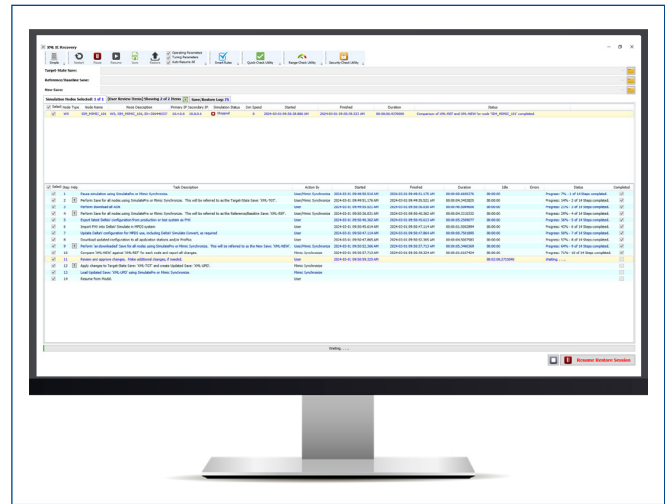


DeltaV™ Mimic Synchronize

- Efficiently update DeltaV snapshots
- Perform rule-based verification of changes and updates
- Logging of every step and parameter processed for simplified management of change



Introduction

DeltaV™ Mimic Synchronize provides the tools needed to more easily maintain your Digital Twin. Mimic Synchronize allows DeltaV power users to keep DeltaV Simulate and production DeltaV systems aligned, ensuring the maximum return from your Multi-Purpose Dynamic Simulation (MPDS) system or Operator Training System (OTS).

Benefits

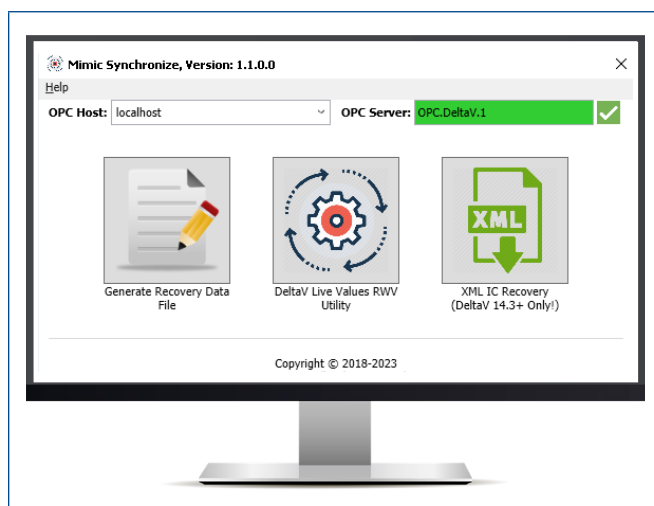
- **Efficiently update DeltaV snapshots** – Update your existing snapshots with the online control values that impact testing and training to save maintenance time and effort.
- **Perform rule-based verification of changes and updates** – Streamline virtual commissioning activities and automatically record the results for easy verification.
- **Logging of every step and parameter processed for simplified management of change (MOC)** – As Mimic Synchronize updates snapshots, it creates a log of every step and parameter processed for simplified MOC.

Product Description

DeltaV Mimic Synchronize minimizes the time and effort required to maintain your MPDS or OTS system by automating the steps required to align the production and DeltaV Simulate environments.

- **The Range-Check Utility** compares two FHX files and identifies and logs range changes.
- **The Parameter Security-Check Utility** is used to compare two FHX files and identify and log changes in security configuration. Using the Security-Check Utility can help the user identify control modules security changes which can affect their monitoring and control.
- **The Quick-Check Utility** uses user-defined rules and pass/fail-criteria to verify a saved system state against online values in the MPDS or OTS. Use rules to verify the same information on all data of one type, streamlining the verification process.

- To support a simple, comprehensive change management process of snapshots between the two systems, **The XML IC Recovery Tool** in Mimic Synchronize supports:
 - Comprehensive comparison of control module additions/deletions, structural changes, and offline parameter modifications in snapshot files.
 - Optional skip or push of identified changes directly to the DeltaV Simulate snapshot files.
 - Perform basic Save and Restore of DeltaV Snapshots.
 - Pause/Resume DeltaV simulation nodes.



Requirements

- Control Systems Supported – DeltaV v14.LTS and later with SimulatePro licensing
- Mimic Synchronize must be installed on a DeltaV Application Station or DeltaV ProfessionalPLUS
- Mimic Synchronize IS NOT DESIGNED, AND MAY NOT BE USED, FOR CONTROL PURPOSES

Product Support

Mimic Product Support is delivered through Guardian™. Guardian is Emerson's digital platform for addressing the end-to-end lifecycle needs of automation & control software and asset performance management solutions. The Guardian digital experience enables users to quickly connect to product support; securely manage subscriptions; get intuitive views into system health; and explore additional software and services that propel performance.

Ordering Information

DeltaV Mimic is licensed on a Flexible Subscription Unit (FSU) basis. An FSU is a currency that can be used to access any Mimic feature licensed on an FSU basis, with each feature requiring its own number of FSUs. The FSU subscription is offered in one-year, three-year, and five-year terms. To purchase, extend, or expand a license, please contact your Emerson Sales Representative.

Related Products

- DeltaV
- DeltaV Mimic Foundation
- DeltaV Mimic Field 3D
- DeltaV Mimic Test Bench
- DeltaV Mimic Train
- DeltaV Mimic Process
- DeltaV Simulate
- DeltaV Simulation Cloud

©2024, Emerson. All rights reserved.

The Emerson logo is a trademark and service mark of Emerson Electric Co. The DeltaV logo is a mark of one of the Emerson family of companies. All other marks are the property of their respective owners.

The contents of this publication are presented for informational purposes only, and while diligent efforts were made to ensure their accuracy, they are not to be construed as warranties or guarantees, express or implied, regarding the products or services described herein or their use or applicability. All sales are governed by our terms and conditions, which are available on request. We reserve the right to modify or improve the designs or specifications of our products at any time without notice.

Contact Us

 www.emerson.com/contactus