

# Railcar Movements

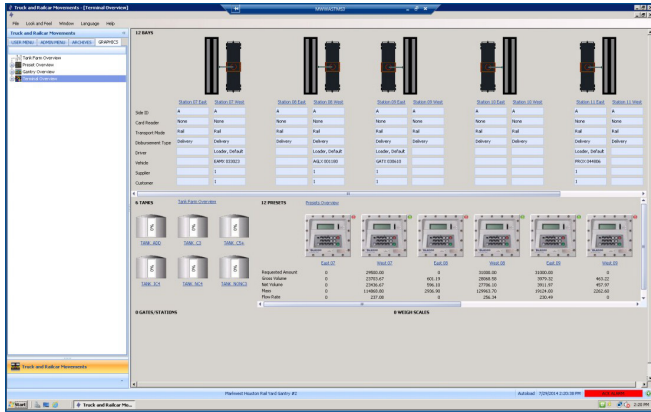


- Delivers real-time knowledge of railcar contents and yard location.
- Reduces shunting of railcars by pre-assigning gantry.
- Allows real-time monitoring with the railcar yard management system.
- Improves utilization of assets.
- Railcar identification using RFID tags.

## Introduction

Syncade Logistics Railcar Movements delivers better planning, scheduling, and tracking of railcars to help you achieve efficient, accurate, safe, and secure deliveries. The Railcar Movements module is specifically designed for today's environment, providing the Terminal Operator with a complete visibility to enable monitoring of all activities happening in the rail yard and gantries.

Support your material tracking efforts, with raw material deliveries driven with Purchase Orders and refined materials moved via Customer Orders. The module tracks and archives the full railcar transactional history, so it is always available for future analysis.



Easily identify railcars on tracks.

## Improve Rail Yard Efficiency

**Eliminate Unnecessary Work.** An efficient rail yard requires railcars positioned on the right track every time. This eliminates time-consuming railcar shunting and positioning that can slow your operation. Through management of railcar IDs, you can ensure right-first-time positioning.

**Reduce Losses.** The Railcar Movements module minimizes losses and increases accountability of unpreventable losses like meter malfunctions, blend errors, inaccurate temperature measurement, or transcription errors from manual logs. The module provides reconciliation that can identify leakage and prevent fines and expensive clean-up costs.

**Improve Planning.** Gain immediate access to data about your orders, railcars, and contents. With this information, you can properly plan the loading and unloading of materials to and from the railcars. You can also react quickly when scheduling changes occur to ensure that material movements and railcars are not unnecessarily delayed.

**Increase productivity.** Automating data collection with physical operation activity management to support accounting, billing, and reconciliation enable your personnel focus on productive tasks. Generate Bills of Lading automatically to avoid delays and accelerate billing.

## Improve Operations

- **Material tracking.** Loading and unloading procedures allow you to position the railcar at the assigned gantry, connect to earth or receive the start trigger, and associate the car to the order number. Gantry, order and railcar are all validated to ensure right-first-time movements. Movement of material and lab sampling are authorized, executed, tracked, and recorded in the system for increased visibility and data access.

- **Order management.** Orders can be created in Syncade or downloaded from your ERP system. Single orderlines created for each railcar allow you to manage railcars individually or group them into Block Orders to manage as a connected set for transport. Report order states back to the ERP as needed to support your business rules.

- **Materials and stock management.** Provides control and visibility for material and stock handling. Materials can be allocated either by quantity, duration, or both.

- **Scheduled email of transactions and reports.** Communicate reports and Bills of Lading to your third party customers in real-time through email scheduling. Ensure your customers are up-to-date on their material status and accelerate your billing cycle.

- **Reconciliation of stock.** Automatic end of day reconciliation of actual stock against book stock.

- **Data historian.** Ensure that your data is secure and available for future reprint or review.

- **Configurable ERP connectivity.** Integrate the module with your ERP system for configurable transactions of orders, movements, database updates, and bulk file downloads.

- **Standalone integration.** Use standard integration components to integrate disparate solutions, such as a DCS or PLC through standard connectors.

- **Secure and compliant.** Use standard user permissions and audit trails to ensure both security and regulatory compliance.



## System Requirements

Please contact your local sales office for a current copy of the Logistics Applications System Requirements document for detailed system specifications and compatibility information.

## Ordering Information

Description	Model Number
Control Room (CR) Advanced	SY1001
Modality Truck and Railcar Advanced	SY1004
Modality Truck and Railcar Experience	SY1005
Modality Truck and Railcar Professional	SY1010

### Emerson Process Management

Asia Pacific: 65.6777.8211  
 Europe, Middle East: 41.41.768.6111  
 North America, Latin America:  
 +1 800.833.8314 or  
 +1 512.832.3774

[www.emersonprocess.com/syncade](http://www.emersonprocess.com/syncade)

©2015, Emerson Process Management. All rights reserved.

The Emerson logo is a trademark and service mark of Emerson Electric Co. All other marks are the property of their respective owners.

The contents of this publication are presented for informational purposes only, and while every effort has been made to ensure their accuracy, they are not to be construed as warranties or guarantees, express or implied, regarding the products or services described herein or their use or applicability. All sales are governed by our terms and conditions, which are available on request. We reserve the right to modify or improve the designs or specifications of our products at any time without notice.