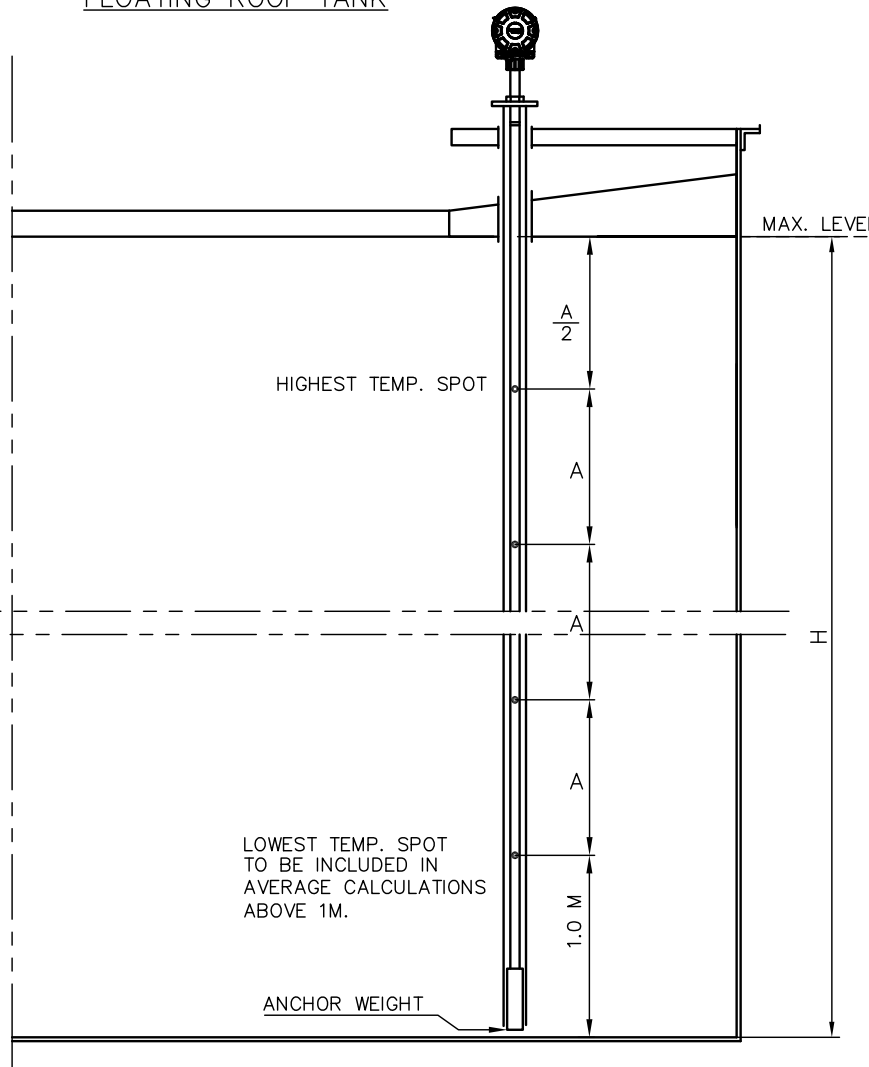
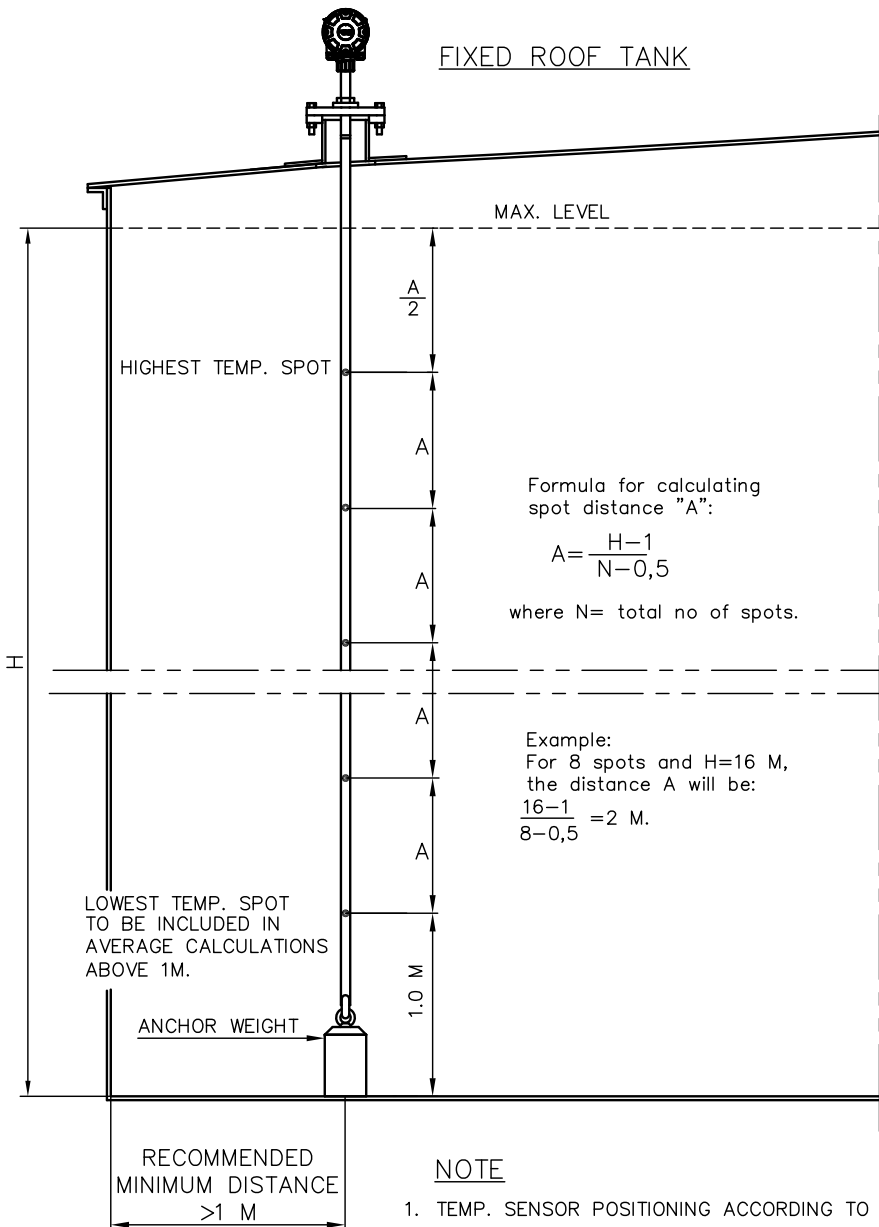


### FIXED ROOF TANK

### FLOATING ROOF TANK



#### NOTE

- TEMP. SENSOR POSITIONING ACCORDING TO API, Chapt 7.3, Sect 5.1.3.1. THE DISTANCE "A" IS RECOMMENDED TO BE <2M.
- SEE ALSO RTR RSI-FORM FOR TEMP. SENSOR ORDERING
- IF THE MULTI-SPOT TEMP SENSOR IS INSTALLED IN A STILL PIPE, THEY SHALL HAVE HOLES OR SLOTS
- TEMP. SPOT INSTALLED CLOSER THAN 1M. FROM TANK BOTTOM SHOULD NOT BE AVERAGED WITH THE OTHER TEMP. SPOTS WHEN THE TANKS OPERATED AT OR ABOVE 1M.

ISSUED BY TP-AJ	WEEK 1047	PRODUCT CODE 2240	FILE ACAD	INSTALLATION DRAWING TITLE <b>ROSEMOUNT 565, 566, 765, RECOMMENDED TEMP SENSOR POSITIONS FOR AVERAGE CALCULATIONS.</b>	
APPROVED BY EMe-MH	WEEK 1047	ORIGINAL DWG NO. D9240041-931	SCALE 1:1	DOC TYPE 02	DWG NO. D9240041-931
 LAYOUTVÄGEN 1, 435 33 MÖLNLYCKE, SWEDEN			1 ST ANGLE 	ISSUE 02	SHEET 01/01
<small>THE COPYRIGHT/OWNERSHIP OF THIS DOCUMENT IS AND WILL REMAIN OURS. THE DOCUMENT MUST NOT BE USED WITHOUT OUR AUTHORIZATION OR BROUGHT TO THE KNOWLEDGE OF A THIRD PARTY. CONTRAVENTION WILL BE PROSECUTED. ROSEMOUNT TANK RADAR AB, SWEDEN.</small>					