



SmartProcess™
Oil & Gas Applications

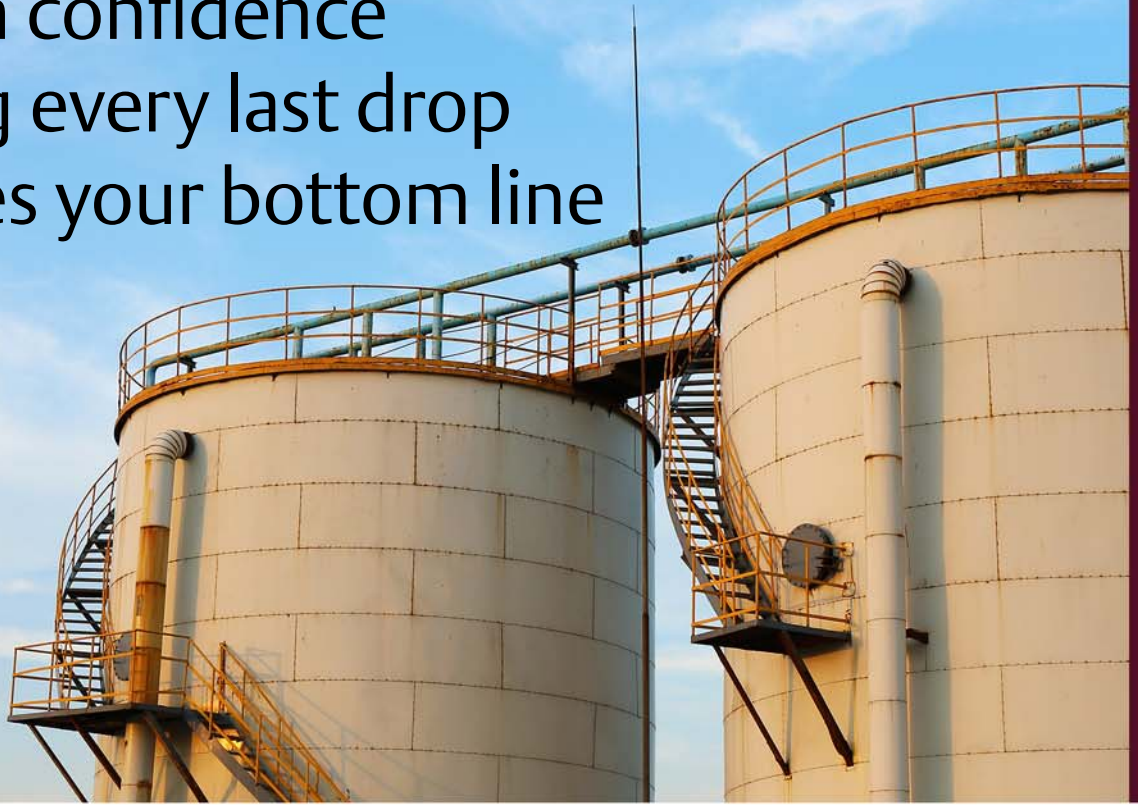
Tank Manager

Remote Automation Solutions



EMERSON
Process Management

Establish certainty and gain confidence knowing every last drop enhances your bottom line



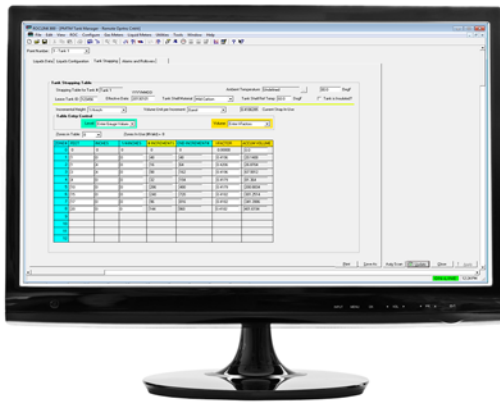
Tank Manager is an innovative application that allows producers to record liquid production and hauling using accurate level and/or flow measurements. Producers can have confirmation of each haul ticket by introducing an audit trail that records all pertinent data. Now, all liquid is accurately accounted for with precise measurement and tracking to enhance their bottom line.

Tank Manager operates on Emerson's FloBoss™ 107 and ROC800-Series to record data from each haul. Security is available to limit driver access. When a haul is completed, Tank Manager creates an electronic haul ticket that includes driver, ID, haul volume, corrected haul volume, hauled time and date, among others.

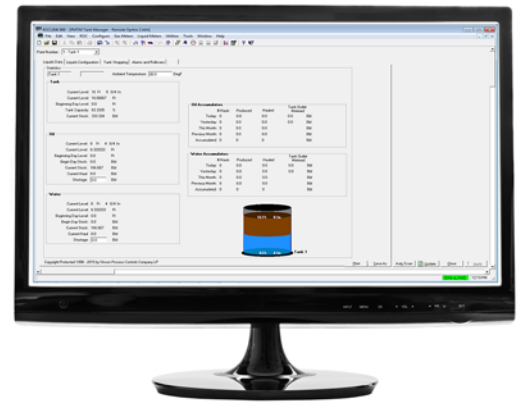
Throughout the entire process all of the time-stamped data is recorded into the device. The production company's SCADA system can easily retrieve this data, which allows the producer to collect completed haul data quite possibly before the trucker leaves the location.



The FloBoss 107 and ROC800-Series solve many challenges that limit the performance, reliability and flexibility of traditional RTUs, EFMs, and PLCs.



Tank Strapping Table



Tank Operate Display

Tank Manager allows users to:

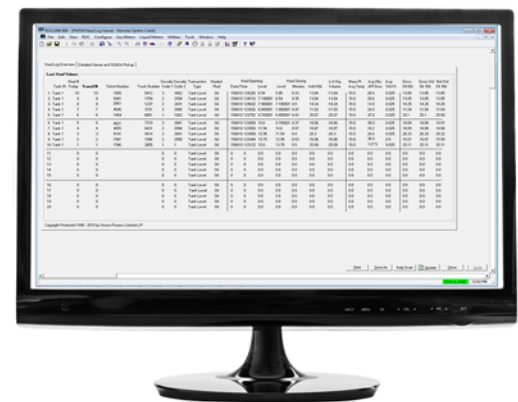
- Ensure precise measurement of delivered quantities
- Reduce uncertainty
- Enhance revenue
- Put the power back into the producer's hands
- Reduce field personnel time associated with verifying post-haul inventories at site
- Minimize manual data entry of hauling activity by office personnel
- Provide safety/control interlocks to automate loading valves or pumps
- Calculate inferred production during hauling, provide “seal on” and “seal off” tracking, and display a variety of tank production statistics in user-friendly displays
- Simulate tank level manipulation, meter rates, and conducting hauls through a version of the Tank Manager program
- Allocate the produced and hauled liquids back to each well at the location

Tank Manager also gives the production companies the following data and capabilities:

- Correction of hauled volume back to Net Standard Volumes (NSV) using API Standard
- Oil and water inventories
- Instantaneous production and hauling totals for each tank or tank aggregate (group of joined tanks)
- Daily and monthly accumulated totals of production and hauled volumes
- Haul Log Viewing
- Measurement Configuration
- LACT Configuration
- Hauling Screens Configuration



Tank Configuration Display



Haul Log Viewer

Find us around the corner or around the world

For a complete list of locations please visit us at www.EmersonProcess.com/Remote



© 2013-2015 Remote Automation Solutions, a business unit of Emerson Process Management. All rights reserved.

Emerson Process Management Ltd, Remote Automation Solutions (UK), is a wholly owned subsidiary of Emerson Electric Co. doing business as Remote Automation Solutions, a business unit of Emerson Process Management. FloBoss, ROCLINK, ControlWave, Helicoid, and OpenEnterprise are trademarks of Remote Automation Solutions. AMS, PlantWeb, and the PlantWeb logo are marks owned by one of the companies in the Emerson Process Management business unit of Emerson Electric Co. Emerson Process Management, Emerson and the Emerson logo are trademarks and service marks of the Emerson Electric Co. All other marks are property of their respective owners.

The contents of this publication are presented for informational purposes only. While every effort has been made to ensure informational accuracy, they are not to be construed as warranties or guarantees, express or implied, regarding the products or services described herein or their use or applicability. Remote Automation Solutions reserves the right to modify or improve the designs or specifications of such products at any time without notice. All sales are governed by Remote Automation Solutions' terms and conditions which are available upon request. Remote Automation Solutions does not assume responsibility for the selection, use or maintenance of any product. Responsibility for proper selection, use and maintenance of any Remote Automation Solutions product remains solely with the purchaser and end-user.

Find us in social media



RemoteAutomationSolutions



Emerson_RAS



Remote Automation Solutions Community



Remote Automation Solutions



Global Headquarters North America and Latin America

Emerson Process Management
Remote Automation Solutions
6005 Rogerdale Road
Houston, TX, USA 77072
T +1 281 879 2699
F +1 281 988 4445

www.EmersonProcess.com/Remote



Europe

Emerson Process Management
Remote Automation Solutions
Unit 8, Waterfront Business Park
Dudley Road, Brierley Hill
Dudley, UK DY5 1LX
T +44 1384 487200
F +44 1384 487258



Middle East and Africa

Emerson Process Management
Remote Automation Solutions
Emerson FZE
PO Box 17033
Jebel Ali Free Zone - South 2
Dubai, UAE
T +971 4 8118100
F +1 281 988 4445



Asia Pacific

Emerson Process Management
Remote Automation Solutions
1 Pandan Crescent
Singapore 128461
T +65 6777 8211
F +65 6777 0947

Remote Automation Solutions

